

JIGAWA STATE ANNUAL SCHOOL CENSUS REPORT 2009-2010

Jigawa State Ministry of Education, Science and Technology
Jigawa State Universal Basic Education Board

July 2010

Preface

The Jigawa State Ministry of Education, Science and Technology is currently implementing the Education Sector Plan 2009-2012 (PEDP II) to improve the quality of education in the State.

The Annual School Census (ASC) is one of the main tools providing information to assess progress in the implementation of our Education Strategic Plan using a set of monitoring indicators.

The current report presents the findings of the 2009-2010 Annual School Census. I am certain that the report will serve as an authentic source of information on the status of education in the State.

I wish to congratulate the Department of Planning, Research and Statistics and the education officials at all levels of government down to the school level who contributed towards the implementation of the ASC and the preparation of this report.

...

Prof. Haruna Wakili

Honourable Commissioner

Jigawa State Ministry of Education, Science
and Technology

July 2010

Table of contents

Preface	i
List of tables	iv
Abbreviations	vi
Background	7
2. Schools	9
3. Students	14
4. Teachers	34
5. Facilities	46
Annex A: Repetition rate, all levels	58

List of tables

Table 2.1 Number of schools	9
Table 2.2 Number of private schools by level	10
Table 2.3 Number of public schools, teachers and enrolment	11
Table 2.4 Number of public schools with special curriculum	13
Table 2.5 Selective characteristics of public schools	13
Table 3.1 Enrolment in public pre-primary education by LGEA	14
Table 3.2 Enrolment in private pre-primary education by LGEA	15
Table 3.3 Public and private pre-primary school enrolment by sex and by LGEA	16
Table 3.4 Public primary school enrolment by class, sex and by LGEA	17
Table 3.5 Enrolment in private primary schools by class, sex and by LGEA	19
Table 3.6 Public and private primary school enrolment by sex and LGEA	21
Table 3.7 Total primary school enrolment by sex and LGEA, public and private	22
Table 3.8 Enrolment in public junior secondary schools by class, sex and by LGEA	23
Table 3.9 Enrolment in private junior secondary schools by class, sex and by LGEA	24
Table 3.10 Public and private junior secondary school enrolment by sex and by LGEA	25
Table 3.11 Total junior secondary school enrolment by sex and LGEA, public & private	26
Table 3.12 Enrolment in public senior secondary schools by class, sex and by LGEA	27
Table 3.13 Enrolment in private senior secondary schools by class, sex and by LGEA	28
Table 3.14 Public and private senior secondary school enrolment by sex and by LGEA	28
Table 3.15 Total Senior Secondary school enrolment by sex and LGEA, public and private	29
Table 3.16 Enrolment of special needs children in public primary schools	31
Table 3.17 Enrolment of special needs children in public secondary schools	31
Table 3.18 Repeaters in public primary schools by LGEA, class and sex	32
Table 3.19 Repeaters in public secondary schools by LGEA, class and sex	33
Table 4.1 Number of public pre primary school teachers by sex and LGEA	34
Table 4.2 Pupil-teacher ratio by LGEA, pre-public primary classes	35
Table 4.3 Number of public primary school teachers by sex and LGEA	36
Table 4.4 Pupil-teacher ratio by LGEA, public primary schools	37
Table 4.5 Number of public junior secondary school teachers by sex and LGEA	39
Table 4.6 Public Pupil-teacher ratio by type and LGEA, junior secondary schools	40
Table 4.7 Number of public senior secondary school teachers by sex and LGEA	41
Table 4.8 Pupil-teacher ratio by type and LGEA, public senior secondary schools	42
Table 4.9 Number of private schools teachers by sex and LGEA	44
Table 4.10 Pupil-teacher ratio by type and LGEA, private schools	44
Table 4.11 Percentage of long-term absent teachers	45
Table 4.12 Percentage of teachers by highest level of education attained	45
Table 4.13 Percentage of teachers by source of salary	45
Table 4.14 Number of teachers who attended training seminar / workshop	45
Table 5.1 Number of classrooms by school type and LGEA	46
Table 5.2 Pupil-classroom ratio by school type and LGEA	47
Table 5.3 Selective characteristics of public primary school facilities	48
Table 5.4 Selective characteristics of public JSS school facilities	49

Table 5.5 Selective characteristics of public SSS school facilities	50
Table 5.6 Main source of safe water in public primary schools	51
Table 5.7 Main source of safe water in JSS	52
Table 5.8 Main source of safe water in SSS	53
Table 5.8 Toilets in public primary schools	54
Table 5.9 Toilets in public JSS	56
Table 5.10 Toilets in public SSS	57
Table A.1	58

List of charts

Chart 2.1 Pupils by levels and gender, public schools	Error! Bookmark not defined.
Chart 2.2 Teachers by levels and gender, public schools	Error! Bookmark not defined. 12
Chart 3.1 Enrolment by level and gender, public and private schools	30
Chart 4.1 Teachers by gender and by qualification, public schools all levels	43
Chart 4.2 Pupil Teacher Ratio by LGEA (Public primary schools)	43
Chart 5.1 Pupil Toilet Ratio by LGEA (Public Primary schools)	Error! Bookmark not defined.

Abbreviations

ASC	Annual School Census
DFID	UK Department For International Development
EMIS	Education Management Information System
ESSPIN	Education Sector Support Program In Nigeria
JSS	Junior Secondary Schools
LGEA	Local Government Education Authority
SBMC	School-Based Management Committee
SMOEST	State Ministry of Education, Science and Technology
SSS	Senior Secondary Schools
SUBEB	State Universal Basic Education Board

Background

The *Nigeria Educational Management Information System Policy*, which was approved at the 54th National Council on Education meeting in Katsina in December 2007, envisages the decentralisation of the system in 2009: “different states are now required to set up, staff and furnish education management information systems for their respective states”.

The *Policy* document determines some coordination principles (in terms of organisations, operations and the transition period). These are further explained in the *Implementation Guidelines for the NEMIS Policy* that were disseminated in August 2009.

According to the *Policy*, the National EMIS Committee is responsible, among others, for:

- Ensuring that EMIS is operational and understood uniformly around the country
- Facilitating the sharing of technical information and practices regularly to all institutions that provide primary data for the management of education at any level
- Developing and monitoring compliance with EMIS policies and updating practice
- Clarifying information needs at all levels of the education system and encouraging the flow of data and the training of participants
- Evaluating the performance of the system and recommending actions

The National EMIS Committee convened in August of 2009 approved the ASC Operational Manual, which is based a census cycle that runs from August to July. The Operational Manual includes guidance for every ASC phase and a timeline.

Based on the *Policy* and the *Guidelines*, the purpose of the *Operational Manual* is to:

- Guide States on how to plan the ASC to achieve the ultimate objective, which is the availability of timely and reliable data on which to base planning decisions
- Facilitate the exchange of information between States on what works and what does not work
- Explain how key aspects of the process will be coordinated and standardised between the States and the Federal level (questionnaires, technology, timeline, reporting)

The National EMIS Committee also approved a simplified ASC questionnaire (8 pages long for the public sector) and an even shorter one for private schools (4 pages long). Mid-November was selected as the period for data collection.

The Jigawa State Full EMIS Committee convened in September of 2009. The Full EMIS Committee approved the ASC budget, the training schedule and the methodology of data collection, which included the use of primary school and secondary school inspectors as enumerators, in order to improve the quality of the information. Training was also provided to data enterers and data analysts. The analysis of the ASC data was completed in June 2010.

The Jigawa SMOEST jointly with the SUBEB with full support of the DFID-funded ESSPIN carried out the school census in the 2009/2010 academic session.

The purpose of the school census is to provide yearly data to effectively monitor the state of the education sector and facilitate the use of information for planning and budgeting decisions.

Jigawa State School Census Report 2009-2010

The Jigawa SMOEST has put great emphasis in ensuring that the results of the ASC are reported in a timely way to the public.

2. Schools

A process of consolidation of the various school lists has been carried out. This process involved the LGEAs and parastatals in various iterations. These efforts resulted in a single school list comprehensive of all sectors (public and private) and levels (pre-primary and primary, JSS and SSS). However, after data collection several schools were captured that were not in the consolidated school list, while some schools in the list were not captured, at least not with the same name. Hence, additional efforts are needed to elaborate a definitive list of schools in advance of the 2010/2011 ASC.

Table 2.1 Number of schools

Original school list	Public			Private
	Primary and Pre Primary*	Junior Secondary	Senior Secondary	
	1.1	1.2	1.3	
1A. Responded	1,788	327	112	69
1B. Did not respond	75	0	0	44
1. Total	1,863	327	112	113
Response rate, original school list %	96	100	100	61
New schools				
2. Total	80	6	2	31
All schools				
1A+2. Responded	1,868	333	114	100
1B. Did not respond	75	0	0	44
1A+1B+2. Total	1,943	333	114	144
Response rate, all schools (%)	96	101	101	69

Table 2.2 Number of private schools by level

	Number of schools		Number of schools
Schols with pre-primary classes	35	Of which: Pre-Primary only *	1
Schools with primary classes *	88	Of which: Primary only *	63
Schools with junior secondary classes	18	Of which: Junior secondary only	3
Schools with senior secondary classes	6	Of which: Senior secondary only	0

Chart 2.1 Pupils by level (public sector)

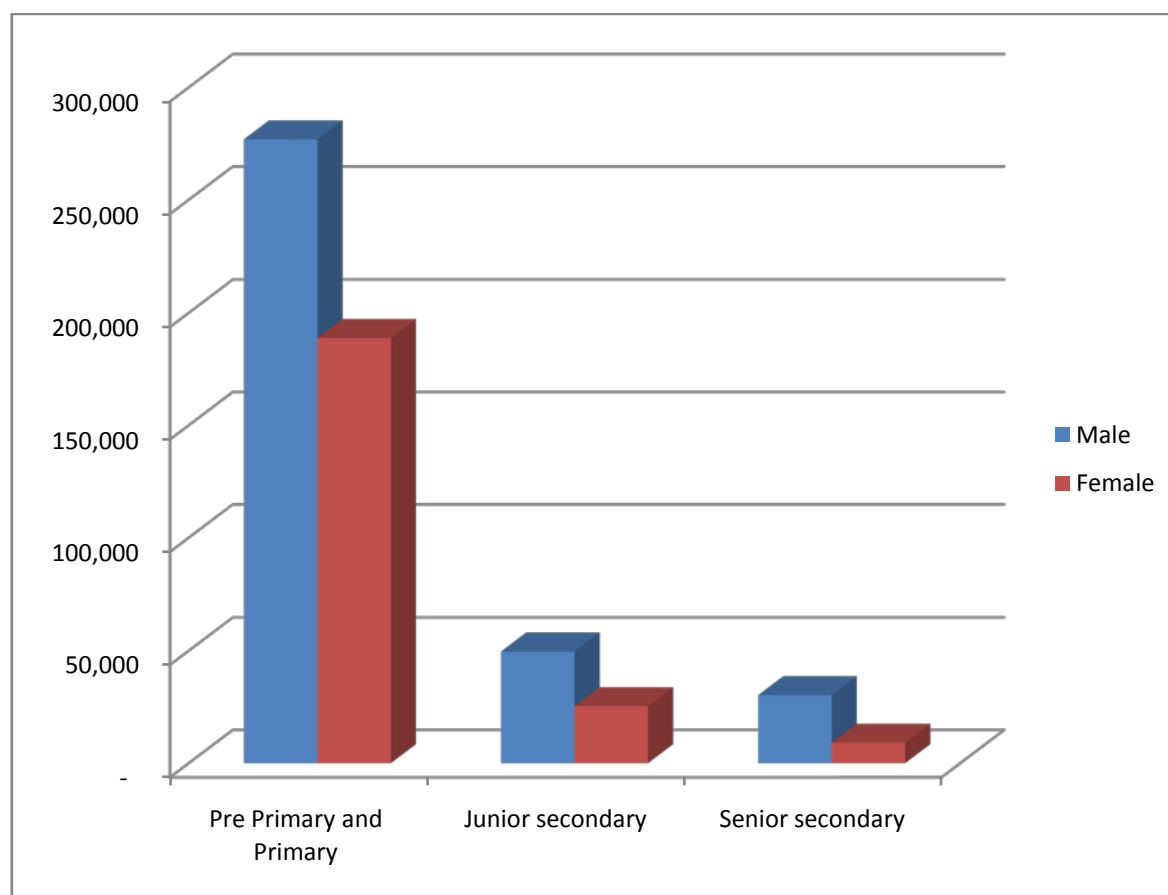


Table 2.3 Number of public schools, teachers and enrolment

Level	Number of schools	Number of pupils			Number of teachers		
		Male	Female	Total	Male	Female	Total
Pre-primary only	2	274	34	308	11	-	11
Pre-primary and primary	265	89,963	71,666	161,629	3,670	1,151	4,821
Primary only	1,601	205,221	135,871	341,092	8,490	679	9,169
Junior secondary	333	49,991	25,473	75,464	2,959	239	3,198
Senior secondary	114	37,421	20,775	58,196	1,933	212	2,145

Chart 2.2 Teachers per level and gender, public schools

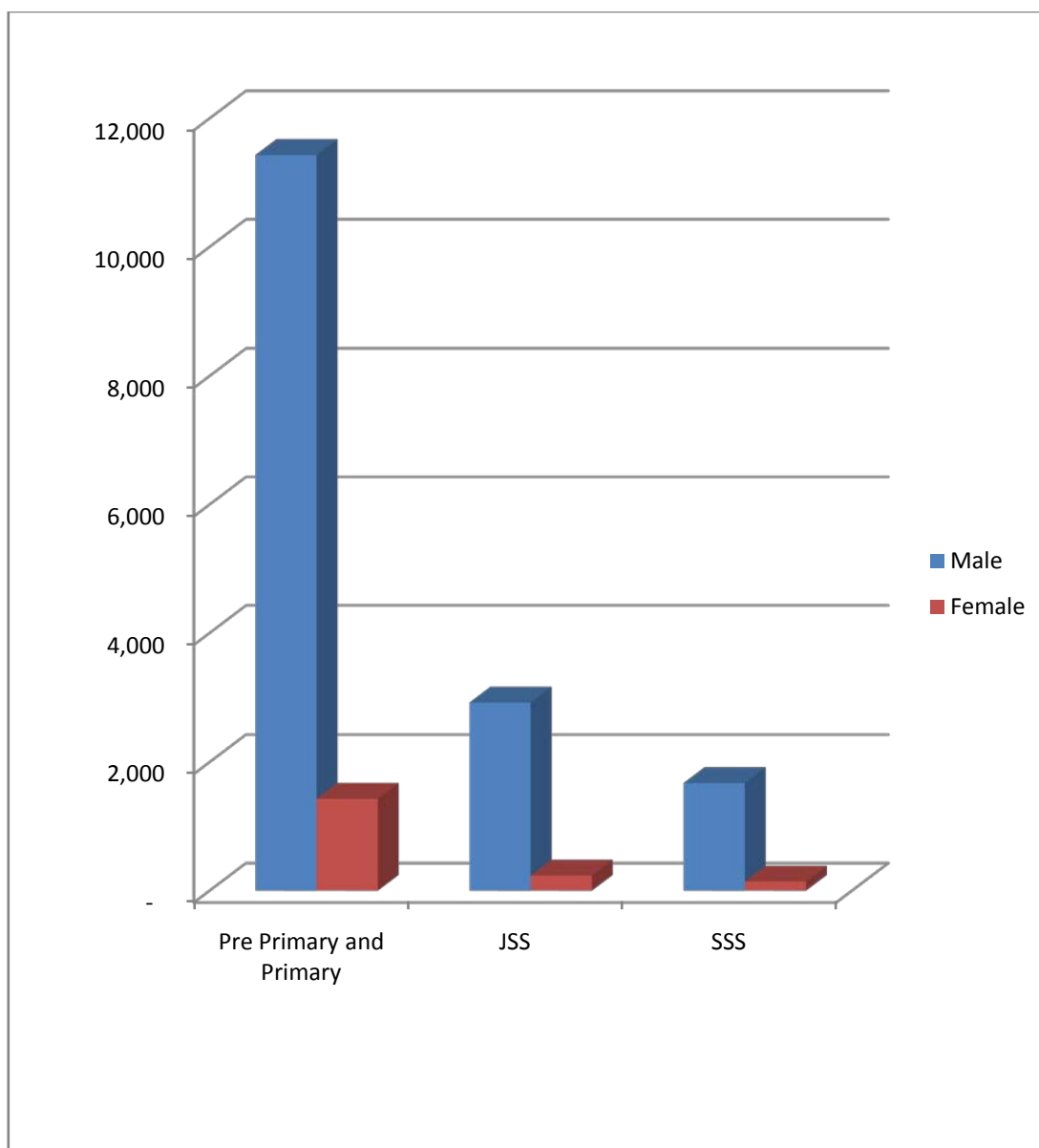


Table 2.4 Number of public schools with special curriculum

Primary education	Number of schools	Number of pupils			Number of teachers		
		Male	Female	Total	Male	Female	Total
Islamiyya Integrated	260	43,421	44,301	87,722	1,770	445	2,215
Nomadic	192	17,713	11,252	28,965	745	30	775
Junior Secondary Education							
Islamiyya Integrated	42	8,286	8,319	16,605	455	53	508
Vocational Training Centre	3	116	0	116	29	0	29
Senior Secondary Education							
Islamiyya Integrated	14	10,623	5,591	16,214	269	29	298

Table 2.5 Selective characteristics of public schools

Number of schools with:	Primary		Junior Secondary		Senior Secondary	
	Urban	Rural	Urban	Rural	Urban	Rural
Double shifts	24	17	6	4	1	1
Shared facilities	89	198	55	189	32	30
School Development Plan	111	861	41	149	26	40
SBMC	219	1,509	82	233	38	60
Parent-Teacher Association	221	1,552	81	238	48	62
Multi-grade teaching	35	220				

3. Students

Table 3.1 Enrolment in public pre-primary education by LGEA

LGEA	Kindergarten			Nursery		
	Boys	Girls	Total	Boys	Girls	Total
AUYO	111	116	227	232	187	419
BABURA	26	25	51	501	441	942
BIRNIN KUDU	357	376	733	498	363	861
BIRNIWA	204	235	439	128	106	234
BUJI	263	204	467	232	146	378
DUTSE	37	30	67	1,364	1,422	2,786
GAGARAWA	0	0	0	269	200	469
GARKI	516	248	764	206	104	310
GUMEL	507	388	895	173	152	325
GURI	142	124	266	190	167	357
GWARAM	214	187	401	1,098	923	2,021
GWIWA	68	81	149	134	110	244
HADEJIA	54	45	99	217	265	482
JAHUN	188	152	340	645	531	1,176
KAFIN HAUSA	137	69	206	814	658	1,472
KAUGAMA	0	0	0	515	415	930
KAZAURE	452	345	797	448	513	961
KIRI KASAMMA	56	28	84	1,434	1,115	2,549
KIYAWA	238	191	429	448	412	860
MAIGATARI	118	72	190	421	419	840
MALLAM MADORI	97	87	184	528	490	1,018
MIGA	86	54	140	78	61	139
RINGIM	70	61	131	574	653	1,227
RONI	261	286	547	101	65	166
SULE TANKARKAR	152	128	280	246	220	466
TAURA	35	39	74	407	465	872
YANKWASHI	128	70	198	41	37	78
TOTAL	4,786	3,841	8,627	11,942	10,640	22,582

Table 3.2 Enrolment in private pre-primary education by LGEA

LGEA	Kindergarten			Nursery		
	Boys	Girls	Total	Boys	Girls	Total
AUYO	0	0	0	0	0	0
BABURA	NA	NA	NA	53	48	101
BIRNIN KUDU	136	117	253	360	333	693
BIRNIWA	0	0	0	0	0	0
BUJI	0	0	0	21	18	39
DUTSE	333	298	631	361	372	733
GAGARAWA	0	0	0	0	0	0
GARKI	30	31	61	118	86	204
GUMEL	46	39	85	243	318	561
GURI	0	0	0	0	0	0
GWARAM	40	31	71	88	103	191
GWIWA	0	0	0	0	0	0
HADEJIA	81	66	147	853	687	1,540
JAHUN	50	27	77	222	200	422
KAFIN HAUSA	0	0	0	0	0	0
KAUGAMA	0	0	0	0	0	0
KAZAURE	0	0	0	244	284	528
KIRI KASAMMA	0	0	0	0	0	0
KIYAWA	51	33	84	73	62	135
MAIGATARI	0	0	0	16	21	37
MALLAM MADORI	55	50	105	145	93	238
MIGA	8	12	20	6	11	17
RINGIM	38	30	68	163	131	294
RONI	0	0	0	0	0	0
SULE TANKARKAR	0	0	0	0	0	0
TAURA	38	25	63	45	42	87
YANKWASHI	0	0	0	0	0	0
TOTAL	906	759	1,665	3,011	2,809	5,820

Table 3.3 Public and private pre-primary school enrolment by sex and by LGEA

LGEA	Kindergarten			Nursery		
	Boys	Girls	Total	Boys	Girls	Total
AUYO	111	116	227	232	187	419
BABURA	26	25	51	554	489	1,043
BIRNIN KUDU	357	376	733	498	363	861
BIRNIWA	340	352	692	487	439	926
BUJI	263	204	467	253	164	417
DUTSE	370	328	698	1,725	1,794	3,519
GAGARAWA	0	0	0	269	200	469
GARKI	546	279	825	324	190	514
GUMEL	553	427	980	416	470	886
GURI	142	124	266	190	167	357
GWARAM	254	218	472	1,186	1,026	2,212
GWIWA	68	81	149	91	78	169
HADEJIA	135	111	246	1070	952	2,022
JAHUN	238	179	417	867	731	1,598
KAFIN HAUSA	137	69	206	542	469	1,011
KAUGAMA	0	0	0	515	415	930
KAZAURE	452	345	797	555	678	1,233
KIRI KASAMMA	56	28	84	1,428	1,094	2,522
KIYAWA	289	224	513	521	474	995
MAIGATARI	118	72	190	437	440	877
MALLAM MADORI	152	137	289	673	583	1,256
MIGA	94	66	160	84	72	156
RINGIM	70	61	131	737	784	1,521
RONI	299	316	615	101	65	166
SULE TANKARKAR	152	128	280	246	220	466
TAURA	73	64	137	452	507	959
YANKWASHI	128	70	198	41	37	78
TOTAL	5,423	4,400	9,823	14,494	13,088	27,582

Table 3.4 Public primary school enrolment by class, sex and by LGEA

LGEA	Class 1			Class 2			Class 3		
	Boys	Girls	Total	Boys	Girls	Total	Boys	Girls	Total
AUYO	1,507	911	2,418	1,577	919	2,496	1,572	847	2,419
BABURA	2,111	1,366	3,477	2,362	1,518	3,880	2,084	1,781	3,865
BIRNIN KUDU	3,535	1,967	5,502	3,322	2,009	5,331	2,856	1,816	4,672
BIRNIWA	1,089	884	1,973	1,272	865	2,137	1,327	1,037	2,364
BUJI	798	585	1,383	1,003	639	1,642	1,033	644	1,677
DUTSE	7,429	1,985	9,414	3,290	2,238	5,528	3,076	1,863	4,939
GAGARAWA	1,263	954	2,217	1,303	862	2,165	1,126	829	1,955
GARKI	1,945	1,320	3,265	1,780	1,277	3,057	1,627	1,203	2,830
GUMEL	2,163	1,814	3,977	1,671	1,300	2,971	1,686	1,226	2,912
GURI	979	707	1,686	985	816	1,801	930	856	1,786
GWARAM	2,931	2,089	5,020	3,407	2,412	5,819	3,298	2,527	5,825
GWIWA	937	666	1,603	1,014	757	1,771	880	692	1,572
HADEJIA	1,531	1,615	3,146	1,591	1,690	3,281	1,758	1,610	3,368
JAHUN	1,753	1,207	2,960	2,635	1,534	4,169	2,014	1,274	3,288
KAFIN HAUSA	3,794	2,239	6,033	3,258	2,108	5,366	3,312	1,823	5,135
KAUGAMA	1,998	1,993	3,991	2,002	1,986	3,988	2,010	1,988	3,998
KAZAURE	1,611	1,434	3,045	1,360	1,188	2,548	1,349	1,270	2,619
KIRI KASAMMA	2,324	1,707	4,031	2,216	1,650	3,866	1,847	1,660	3,507
KIYAWA	1,958	1,023	2,981	2,286	1,051	3,337	1,848	1,080	2,928
MAIGATARI	1,492	1,249	2,741	2,949	1,404	4,353	1,708	1,576	3,284
MALLAM MADORI	1,862	1,419	3,281	1,966	1,299	3,265	1,787	1,359	3,146
MIGA	1,456	877	2,333	1,616	936	2,552	1,467	793	2,260
RINGIM	2,536	1,965	4,501	4,547	1,933	6,480	2,305	1,824	4,129
RONI	893	605	1,498	980	684	1,664	887	636	1,523
SULE TANKARKAR	3,838	1,628	5,466	2,270	1,683	3,953	2,264	1,719	3,983
TAURA	1,440	991	2,431	1,647	1,124	2,771	1,462	933	2,395
YANKWASHI	769	470	1,239	828	679	1,507	701	564	1,265
TOTAL	55,942	35,670	91,612	55,137	36,561	91,698	48,214	35,430	83,644

Jigawa State School Census Report 2009-2010

LGEA	Class 4			Class 5			Class 6		
	Boys	Girls	Total	Boys	Girls	Total	Boys	Girls	Total
AUYO	1,370	775	2,145	1,272	656	1,928	1,044	582	1,626
BABURA	1,896	1,359	3,255	1,427	962	2,389	1,272	875	2,147
BIRNIN KUDU	2,375	1,473	3,848	2,065	1,213	3,278	1,964	1,106	3,070
BIRNIWA	1,208	1,118	2,326	1,101	823	1,924	1,093	796	1,889
BUJI	892	582	1,474	787	451	1,238	600	344	944
DUTSE	2,607	1,747	4,354	2,240	1,469	3,709	2,000	1,073	3,073
GAGARAWA	1,152	796	1,948	1,094	708	1,802	999	672	1,671
GARKI	1,349	1,008	2,357	1,343	1,013	2,356	1,255	1,057	2,312
GUMEL	1,349	1,156	2,505	881	784	1,665	811	716	1,527
GURI	1,021	883	1,904	975	783	1,758	708	558	1,266
GWARAM	2,818	1,985	4,803	2,619	1,674	4,293	2,419	1,532	3,951
GWIWA	853	683	1,536	713	504	1,217	562	374	936
HADEJIA	1,562	1,508	3,070	1,342	1,396	2,738	1,250	1,221	2,471
JAHUN	1,728	1,055	2,783	1,513	1,097	2,610	1,485	985	2,470
KAFIN HAUSA	3,087	1,663	4,750	3,285	1,591	4,876	3,597	1,634	5,231
KAUGAMA	2,024	2,009	4,033	2,003	1,995	3,998	2,010	1,988	3,998
KAZAURE	1,550	1,194	2,744	1,504	1,413	2,917	1,393	994	2,387
KIRI KASAMMA	1,723	1,269	2,992	1,414	899	2,313	1,180	776	1,956
KIYAWA	1,708	874	2,582	1,550	890	2,440	1,530	692	2,222
MAIGATARI	1,339	1,108	2,447	1,154	916	2,070	911	790	1,701
MALLAM MADORI	1,443	1,211	2,654	1,163	974	2,137	1,066	857	1,923
MIGA	1,166	634	1,800	892	426	1,318	937	423	1,360
RINGIM	2,239	1,714	3,953	2,138	1,707	3,845	2,280	1,732	4,012
RONI	1,147	937	2,084	787	622	1,409	673	588	1,261
SULE TANKARKAR	2,101	1,641	3,742	2,048	1,678	3,726	1,808	1,370	3,178
TAURA	1,485	1,061	2,546	1,292	927	2,219	1,130	696	1,826
YANKWASHI	721	515	1,236	741	551	1,292	676	446	1,122
TOTAL	43,913	31,958	75,871	39,343	28,122	67,465	36,653	24,877	61,530

Table 3.5 Enrolment in private primary schools by class, sex and by LGEA

LGEA	Class 1			Class 2			Class 3		
	Boys	Girls	Total	Boys	Girls	Total	Boys	Girls	Total
AUYO	0	0	0	0	0	0	0	0	0
BABURA	67	54	121	27	33	60	17	12	29
BIRNIN KUDU	138	134	272	105	102	207	100	106	206
BIRNIWA	0	0	0	0	0	0	0	0	0
BUJI	30	21	51	18	22	40	31	23	54
DUTSE	218	216	434	184	224	408	151	176	327
GAGARAWA	0	0	0	0	0	0	0	0	0
GARKI	14	12	26	17	8	25	6	10	16
GUMEL	200	163	363	166	158	324	145	131	276
GURI	0	0	0	0	0	0	0	0	0
GWARAM	67	52	119	55	39	94	38	25	63
GWIWA	262	207	469	187	196	383	173	177	350
HADEJIA	274	289	563	304	283	587	247	251	498
JAHUN	55	39	94	52	29	81	57	27	84
KAFIN HAUSA	195	128	323	198	160	358	120	159	279
KAUGAMA	0	0	0	0	0	0	0	0	0
KAZAURE	145	132	277	123	130	253	107	98	205
KIRI KASAMMA	0	0	0	0	0	0	0	0	0
KIYAWA	34	34	68	26	26	52	27	16	43
MAIGATARI	220	302	522	146	250	396	49	122	171
MALLAM MADORI	131	183	314	166	194	360	83	154	237
MIGA	43	20	63	34	31	65	39	53	92
RINGIM	56	43	99	35	38	73	36	36	72
RONI	12	8	20	10	15	25	8	10	18
SULE TANKARKAR	0	0	0	0	0	0	0	0	0
TAURA	75	142	217	51	110	161	47	89	136
YANKWASHI	0	0	0	0	0	0	0	0	0
TOTAL	2,236	2,179	4,415	1,904	2,048	3,952	1,481	1,675	3,156

Jigawa State School Census Report 2009-2010

LGEA	Class 4			Class 5			Class 6		
	Boys	Girls	Total	Boys	Girls	Total	Boys	Girls	Total
AUYO	0	0	0	0	0	0	0	0	0
BABURA	14	12	26	14	12	26	0	0	0
BIRNIN KUDU	49	39	88	42	32	74	0	0	0
BIRNIWA	0	0	0	0	0	0	0	0	0
BUJI	0	0	0	0	0	0	0	0	0
DUTSE	145	148	293	91	98	189	17	15	32
GAGARAWA	0	0	0	0	0	0	0	0	0
GARKI	8	6	14	5	2	7	0	0	0
GUMEL	107	107	214	91	68	159	49	48	97
GURI	0	0	0	0	0	0	0	0	0
GWARAM	15	13	28	0	0	0	0	0	0
GWIWA	101	109	210	95	70	165	65	56	121
HADEJIA	246	239	485	191	174	365	65	77	142
JAHUN	27	18	45	6	0	6	0	0	0
KAFIN HAUSA	85	117	202	42	34	76	0	0	0
KAUGAMA	0	0	0	0	0	0	0	0	0
KAZAURE	87	54	141	53	60	113	6	6	12
KIRI KASAMMA	0	0	0	0	0	0	0	0	0
KIYAWA	15	9	24	16	2	18	7	3	10
MAIGATARI	43	119	162	0	0	0	0	0	0
MALLAM MADORI	67	133	200	12	77	89	14	41	55
MIGA	14	22	36	1	19	20	0	0	0
RINGIM	22	15	37	20	13	33	19	16	35
RONI	8	5	13	0	0	0	0	0	0
SULE TANKARKAR	0	0	0	0	0	0	0	0	0
TAURA	30	45	75	26	44	70	61	22	83
YANKWASHI	0	0	0	0	0	0	0	0	0
TOTAL	1,083	1,210	2,293	705	705	1,410	303	284	587

Table 3.6 Public and private primary school enrolment by sex and LGEA

LGEA	Public				Private			
	Number of Schools	Pupils	Girls	% girls	Number of Schools	Pupils	Girls	% girls
AUYO	51	13,032	4,690	36.0	0	0	0	0.0
BABURA	87	19,013	7,861	41.3	2	262	123	46.9
BIRNIN KUDU	95	25,701	9,584	37.3	4	847	413	48.8
BIRNIWA	67	12,613	5,523	43.8	0	0	0	0.0
BUJI	40	8,358	3,245	38.8	1	145	66	45.5
DUTSE	116	31,017	10,375	33.4	13	1,683	877	52.1
GAGARAWA	56	11,758	4,821	41.0	0	0	0	0.0
GARKI	101	16,177	6,878	42.5	2	88	38	43.2
GUMEL	47	15,557	6,996	45.0	7	1,433	675	47.1
GURI	58	10,201	4,603	45.1	0	0	0	0.0
GWARAM	115	29,711	12,219	41.1	3	304	129	42.4
GWIIWA	42	8,635	3,676	42.6	7	1,698	815	48.0
HADEJIA	27	18,074	9,040	50.0	9	2,640	1,313	49.7
JAHUN	71	18,280	7,152	39.1	3	310	113	36.5
KAFIN HAUSA	108	31,391	11,058	35.2	8	1,238	598	48.3
KAUGAMA	71	24,006	11,959	49.8	0	0	0	0.0
KAZAURE	38	16,260	7,493	46.1	6	1,001	480	48.0
KIRI KASAMMA	75	18,665	7,961	42.7	0	0	0	0.0
KIYAWA	78	16,490	5,610	34.0	3	215	90	41.9
MAIGATARI	88	16,596	7,043	42.4	8	1,251	793	63.4
MALLAM MADORI	66	16,406	7,119	43.4	6	1,255	782	62.3
MIGA	48	11,623	4,089	35.2	2	276	145	52.5
RINGIM	81	26,920	10,875	40.4	2	349	161	46.1
RONI	34	9,439	4,072	43.1	1	76	38	50.0
SULE TANKARKAR	117	24,048	9,719	40.4	0	0	0	0.0
TAURA	61	14,188	5,732	40.4	3	742	452	60.9
YANKWASHI	30	7,661	3,225	42.1	0	0	0	0.0
TOTAL	1,868	471,820	192,618	40.8	88	15,813	8,101	51.2

Table 3.7 Total primary school enrolment by sex and LGEA, public and private

LGEA	Total			Aged 06 - 11		
	Pupils	Girls	% girls	Pupils	Girls	% female
AUYO	13,032	4,690	36.0	11,747	4,241	36.1
BABURA	19,275	7,984	41.4	N/A	N/A	N/A
BIRNIN KUDU	26,548	9,997	37.7	23,354	8,815	37.7
BIRNIWA	12,613	5,523	43.8	11,416	5,027	44.0
BUJI	8,503	3,311	38.9	8,242	3,227	39.2
DUTSE	32,700	11,252	34.4	29,837	10,418	34.9
GAGARAWA	11,758	4,821	41.0	11,296	4,661	41.3
GARKI	16,265	6,916	42.5	14,516	6,241	43.0
GUMEL	16,990	7,671	45.2	13,875	6,344	45.7
GURI	10,201	4,603	45.1	9,197	4,161	45.2
GWARAM	30,015	12,348	41.1	27,822	11,510	41.4
GWIWA	10,333	4,491	43.5	9,788	4,322	44.2
HADEJIA	20,714	10,353	50.0	18,888	9,716	51.4
JAHUN	18,590	7,265	39.1	16,953	6,715	39.6
KAFIN HAUSA	32,629	11,656	35.7	23,468	8,945	38.1
KAUGAMA	24,006	11,959	49.8	21,503	11,108	51.7
KAZAURE	17,261	7,973	46.2	13,823	6,430	46.5
KIRI KASAMMA	18,665	7,961	42.7	14,715	6,417	43.6
KIYAWA	16,705	5,700	34.1	14,792	5,223	35.3
MAIGATARI	17,847	7,836	43.9	16,564	7,509	45.3
MALLAM MADORI	17,661	7,901	44.7	15,246	6,879	45.1
MIGA	11,899	4,234	35.6	9,715	3,344	34.4
RINGIM	27,269	11,036	40.5	20,238	10,213	50.5
RONI	9,515	4,110	43.2	8,633	3,809	44.1
SULE TANKARKAR	24,048	9,719	40.4	18,411	9,540	51.8
TAURA	14,930	6,184	41.4	13,001	5,195	40.0
YANKWASHI	7,661	3,225	42.1	7,442	3,130	42.1
TOTAL	487,633	200,719	41.2	407,926	174,333	42.7

Table 3.8 Enrolment in public junior secondary schools by class, sex and by LGEA

LGEA	JS1			JS2			JS3		
	Boys	Girls	Total	Boys	Girls	Total	Boys	Girls	Total
AUYO	461	196	657	480	75	555	366	79	445
BABURA	567	272	839	491	217	708	377	129	506
BIRNIN KUDU	977	461	1,438	835	397	1,232	793	306	1,099
BIRNIWA	215	307	522	230	150	380	246	168	414
BUJI	190	35	225	256	52	308	199	29	228
DUTSE	1,412	665	2,077	1,393	577	1,970	1,272	522	1,794
GAGARAWA	250	125	375	234	90	324	211	70	281
GARKI	379	198	577	443	223	666	358	186	544
GUMEL	657	585	1,242	665	581	1,246	685	450	1,135
GURI	455	418	873	342	429	771	373	322	695
GWARAM	1,336	700	2,036	1,342	772	2,114	1,129	667	1,796
GWIWA	187	87	274	151	53	204	164	35	199
HADEJIA	1,336	1,017	2,353	1,361	924	2,285	1,343	748	2,091
JAHUN	1,143	424	1,567	1,169	435	1,604	812	262	1,074
KAFIN HAUSA	940	407	1,347	853	339	1,192	838	312	1,150
KAUGAMA	657	363	1,020	636	241	877	584	256	840
KAZAURE	621	520	1,141	623	483	1,106	599	459	1,058
KIRI KASAMMA	351	153	504	334	119	453	339	105	444
KIYAWA	492	254	746	531	213	744	419	163	582
MAIGATARI	568	251	819	357	273	630	377	267	644
MALLAM MADORI	600	369	969	629	475	1,104	520	369	889
MIGA	398	100	498	310	81	391	350	57	407
RINGIM	954	285	1,239	1,034	384	1,418	873	309	1,182
RONI	327	158	485	349	157	506	243	93	336
SULE TANKARKAR	640	788	1,428	688	651	1,339	482	507	989
TAURA	645	322	967	1,421	252	1,673	648	200	848
YANKWASHI	556	127	683	435	92	527	485	81	566
TOTAL	17,314	9,587	26,901	17,592	8,735	26,327	15,085	7,151	22,236

Table 3.9 Enrolment in private junior secondary schools by class, sex and by LGEA

LGEA	JS1			JS2			JS3		
	Boys	Girls	Total	Boys	Girls	Total	Boys	Girls	Total
AUYO	0	0	0	0	0	0	0	0	0
BABURA	0	0	0	0	0	0	0	0	0
BIRNIN KUDU	25	22	47	31	25	56	26	16	42
BIRNIWA	0	0	0	0	0	0	0	0	0
BUJI	0	0	0	0	0	0	0	0	0
DUTSE	48	83	131	44	55	99	58	64	122
GAGARAWA	0	0	0	0	0	0	0	0	0
GARKI	0	0	0	0	0	0	0	0	0
GUMEL	24	29	53	19	17	36	9	11	
GURI	0	0	0	0	0	0	0	0	0
GWARAM	0	0	0	0	0	0	0	0	0
GWIWA	0	0	0	0	0	0	0	0	0
HADEJIA	138	135	273	120	612	732	114	85	199
JAHUN	9	2	11	1	2	3	2	2	4
KAFIN HAUSA	0	0	0	0	0	0	0	0	0
KAUGAMA	0	0	0	0	0	0	0	0	0
KAZAURE	17	10	27	8	5	13	8	7	15
KIRI KASAMMA	0	0	0	0	0	0	0	0	0
KIYAWA	0	0	0	0	0	0	0	0	0
MAIGATARI	41	50	91	42	16	58	18	39	56
MALLAM MADORI	0	0	0	0	0	0	0	0	0
MIGA	0	0	0	0	0	0	0	0	0
RINGIM	0	0	0	0	0	0	0	0	0
RONI	0	0	0	0	0	0	0	0	0
SULE TANKARKAR	0	0	0	0	0	0	0	0	0
TAURA	0	0	0	0	0	0	0	0	0
YANKWASHI	0	0	0	0	0	0	0	0	0
TOTAL	302	331	633	265	732	997	235	224	459

Table 3.10 Public and private junior secondary school enrolment by sex and by LGEA

LGEA	Public				Private			
	Schools	Pupils	Girls	% girls	Schools	Total	Girls	% girls
AUYO	8	1,657	350	21.1	0	0	0	0.0
BABURA	10	2,053	618	30.1	0	0	0	0.0
BIRNIN KUDU	17	3,769	1,164	30.9	1	145	63	43.4
BIRNIWA	11	1,316	625	47.5	0	0	0	0.0
BUJI	5	761	116	15.2	0	0	0	0.0
DUTSE	29	5,841	1,764	30.2	5	352	202	57.4
GAGARAWA	8	980	285	29.1	0	0	0	0.0
GARKI	13	1,787	607	34.0	0	0	0	0.0
GUMEL	7	3,623	1,616	44.6	1	89	57	64.0
GURI	12	2,339	1,169	50.0	0	0	0	0.0
GWARAM	23	5,946	2,139	36.0	0	0	0	0.0
GWIWA	9	677	175	25.8	0	0	0	0.0
HADEJIA	8	6,729	2,689	40.0	6	1,204	832	69.1
JAHUN	17	4,245	1,121	26.4	1	18	6	33.3
KAFIN HAUSA	16	3,689	1,058	28.7	0	0	0	0.0
KAUGAMA	14	2,737	860	31.4	0	0	0	0.0
KAZAURE	12	3,305	1,462	44.2	2	55	22	40.0
KIRI KASAMMA	10	1,401	377	26.9	0	0	0	0.0
KIYAWA	11	2,072	630	30.4	0	0	0	0.0
MAIGATARI	12	2,093	791	37.8	2	205	104	50.7
MALLAM MADORI	11	2,962	1,213	41.0	0	0	0	0.0
MIGA	8	1,296	238	18.4	0	0	0	0.0
RINGIM	12	3,839	978	25.5	0	0	0	0.0
RONI	12	1,327	408	30.7	0	0	0	0.0
SULE TANKARKAR	15	3,756	1,946	51.8	0	0	0	0.0
TAURA	12	3,488	774	22.2	0	0	0	0.0
YANKWASHI	11	1,776	300	16.9	0	0	0	0.0
TOTAL	333	75,464	25,473	33.8	18	2,089	1,287	62.2

Table 3.11 Total junior secondary school enrolment by sex and LGEA, public & private

LGEA	Total			Aged 12 -15		
	Pupils	Girls	% girls	Total	Female	% female
AUYO	1,657	350	21.1	937	188	20.1
BABURA	2,053	618	30.1	1,832	565	30.8
BIRNIN KUDU	3,914	1,227	31.3	3,404	1,100	32.3
BIRNIWA	1,316	625	47.5	1,142	575	50.4
BUJI	761	116	15.2	626	115	18.4
DUTSE	6,193	1,966	31.7	5,381	1,702	31.6
GAGARAWA	980	285	29.1	896	261	29.1
GARKI	1,787	607	34.0	1,485	584	39.3
GUMEL	3,712	1,673	45.1	2,456	1,130	46.0
GURI	2,339	1,169	50.0	2,038	1,041	51.1
GWARAM	5,946	2,139	36.0	4,683	1,949	41.6
GWIWA	677	175	25.8	663	164	24.7
HADEJIA	7,933	3,521	44.4	7,003	3,213	45.9
JAHUN	4,263	1,127	26.4	2,816	887	31.5
KAFIN HAUSA	3,689	1,058	28.7	2,950	826	28.0
KAUGAMA	2,737	860	31.4	2,006	720	35.9
KAZAURE	3,360	1,484	44.2	2,618	1,185	45.3
KIRI KASAMMA	1,401	377	26.9	495	70	14.1
KIYAWA	2,072	630	30.4	1,487	554	37.3
MAIGATARI	2,298	895	38.9	1,922	732	38.1
MALLAM MADORI	2,962	1,213	41.0	2,016	859	42.6
MIGA	1,296	238	18.4	1,005	193	19.2
RINGIM	3,839	978	25.5	3,162	618	19.5
RONI	1,327	408	30.7	1,204	353	29.3
SULE TANKARKAR	3,756	1,946	51.8	3,182	1,648	51.8
TAURA	3,488	774	22.2	2,676	463	17.3
YANKWASHI	1,776	300	16.9	1,719	278	16.2
TOTAL	77,553	26,760	34.5	61,804	21,973	35.6

Table 3.12 Enrolment in public senior secondary schools by class, sex and by LGEA

LGEA	SS1			SS2			SS3		
	Boys	Girls	Total	Boys	Girls	Total	Boys	Girls	Total
AUYO	123	120	2430	109	10	119	10	0	10
BABURA	336	302	638	541	293	834	338	0	338
BIRNIN KUDU	988	1,116	2,104	1,234	0	1,234	0	0	0
BIRNIWA	132	105	237	203	0	203	156	0	156
BUJI	79	125	204	125	0	125	50	0	50
DUTSE	1,103	959	2,062	959	133	1,092	888	93	981
GAGARAWA	130	110	240	124	0	124	50	0	50
GARKI	133	348	481	105	348	453	202	251	453
GUMEL	800	729	1,529	688	111	799	688	81	769
GURI	73	48	121	76	0	76	0	0	0
GWARAM	902	696	1,598	696	499	1,195	648	396	1,044
GWIIWA	84	109	193	109	0	109	68	0	68
HADEJIA	2,619	2,736	5,355	2,269	410	2,679	1,045	220	1,269
JAHUN	555	731	1,286	753	236	989	753	216	969
KAFIN HAUSA	683	698	1,381	698	31	729	621	18	639
KAUGAMA	309	693	1,002	300	693	993	354	347	701
KAZAURE	246	363	609	363	260	623	227	147	374
KIRI KASAMMA	64	119	183	103	0	103	33	0	33
KIYAWA	277	245	522	248	0	248	0	0	0
MAIGATARI	573	668	1,241	668	0	668	590	0	590
MALLAM MADORI	32	158	190	40	158	198	82	45	127
MIGA	30	39	69	39	0	39	0	0	0
RINGIM	1,418	376	1,794	1,282	120	1,402	1,125	60	1,185
RONI	403	275	678	412	270	682	412	135	547
SULE TANKARKAR	176	972	1,148	161	972	1,133	423	287	710
TAURA	493	391	884	450	385	835	450	145	595
YANKWASHI	168	174	342	174	0	174	159	0	159
TOTAL	12,929	13,405	28,521	12,929	4,929	17,858	9,372	2,441	11,817

Table 3.13 Enrolment in private senior secondary schools by class, sex and by LGEA

LGEA	SS1			SS2			SS3		
	Boys	Girls	Total	Boys	Girls	Total	Boys	Girls	Total
DUTSE	28	24	52	28	40	68	8	17	25
HADEJIA	78	53	131	87	65	152	78	23	101
Total	106	77	183	115	105	220	86	40	126

Table 3.14 Public and private senior secondary school enrolment by sex and by LGEA

LGEA	Public				Private			
	Schools	Pupils	Girls	% girls	Schools	Total	Girls	% girls
AUYO	3	2,559	130	5.1	0	0	0	0.0
BABURA	5	1,810	595	32.9	0	0	0	0.0
BIRNIN KUDU	5	3,338	1,116	33.4	0	0	0	0.0
BIRNIWA	3	596	105	17.6	0	0	0	0.0
BUJI	3	379	125	33.0	0	0	0	0.0
DUTSE	8	4,135	1,185	28.7	2	145	81	55.9
GAGARAWA	3	414	110	26.6	0	0	0	0.0
GARKI	3	1,387	947	68.3	0	0	0	0.0
GUMEL	3	3,097	921	29.7	0	0	0	0.0
GURI	1	197	48	24.4	0	0	0	0.0
GWARAM	9	3,837	1,591	41.5	0	0	0	0.0
GWIWA	2	370	109	29.5	0	0	0	0.0
HADEJIA	6	9,303	3,366	36.2	4	384	141	36.5
JAHUN	7	3,244	1,183	36.5	0	0	0	0.0
KAFIN HAUSA	7	2,749	747	27.2	0	0	0	0.0
KAUGAMA	5	2,696	1,733	64.3	0	0	0	0.0
KAZAURE	3	1,606	770	47.9	0	0	0	0.0
KIRI KASAMMA	2	319	119	37.3	0	0	0	0.0
KIYAWA	4	770	245	31.8	0	0	0	0.0
MAIGATARI	1	2,499	668	26.7	0	0	0	0.0
MALLAM MADORI	4	515	361	70.1	0	0	0	0.0
MIGA	2	108	39	36.1	0	0	0	0.0
RINGIM	8	4,381	556	12.7	0	0	0	0.0
RONI	3	1,907	680	35.7	0	0	0	0.0
SULE TANKARKAR	5	2,991	2,231	74.6	0	0	0	0.0
TAURA	8	2,314	921	39.8	0	0	0	0.0
YANKWASHI	2	675	174	25.8	0	0	0	0.0
TOTAL	114	58,196	20,775	35.7	6	529	222	41.9

Table 3.15 Total Senior Secondary school enrolment by sex and LGEA, public and private

LGEA	Total			Aged 15-18		
	Pupils	Girls	% girls	Total	Female	% female
AUYO	2,559	130	5.1	N/A	N/A	N/A
BABURA	1,810	595	32.9	N/A	N/A	N/A
BIRNIN KUDU	3,338	1,116	33.4	3,338	0	0
BIRNIWA	596	105	17.6	463	N/A	N/A
BUJI	379	125	33.0	191	N/A	N/A
DUTSE	4,280	1,266	29.6	3,401	468	13.8
GAGARAWA	414	110	26.6	N/A	N/A	N/A
GARKI	1,387	947	68.3	N/A	N/A	N/A
GUMEL	3,097	921	29.7	2,472	259	10.5
GURI	197	48	24.4	N/A	N/A	N/A
GWARAM	3,837	1,591	41.5	3,490	1,286	36.8
GWIWA	370	109	29.5	N/A	N/A	N/A
HADEJIA	9,687	3,507	36.2	N/A	N/A	N/A
JAHUN	3,244	1,183	36.5	2,188	624	28.5
KAFIN HAUSA	2,749	747	27.2	1,707	N/A	N/A
KAUGAMA	2,696	1,733	64.3	2,156	1,277	59.2
KAZAURE	1,606	770	47.9	1,437	602	41.9
KIRI KASAMMA	319	119	37.3	55	0	0
KIYAWA	770	245	31.8	120	0	0
MAIGATARI	2,499	668	26.7	1,796	0	0
MALLAM MADORI	515	361	70.1	354	253	71.5
MIGA	108	39	36.1	44	0	0
RINGIM	4,381	556	12.7	2,718	239	8.8
RONI	1,907	680	35.7	1,556	533	34.3
SULE TANKARKAR	2,991	2,231	74.6	1,416	1,101	77.8
TAURA	2,314	921	39.8	1,651	732	44.3
YANKWASHI	675	174	25.8	304	0	0
TOTAL	58,196	20,775	35.7	N/A	N/A	N/A

Chart 3.1 Enrolment by level and sex (public and private)

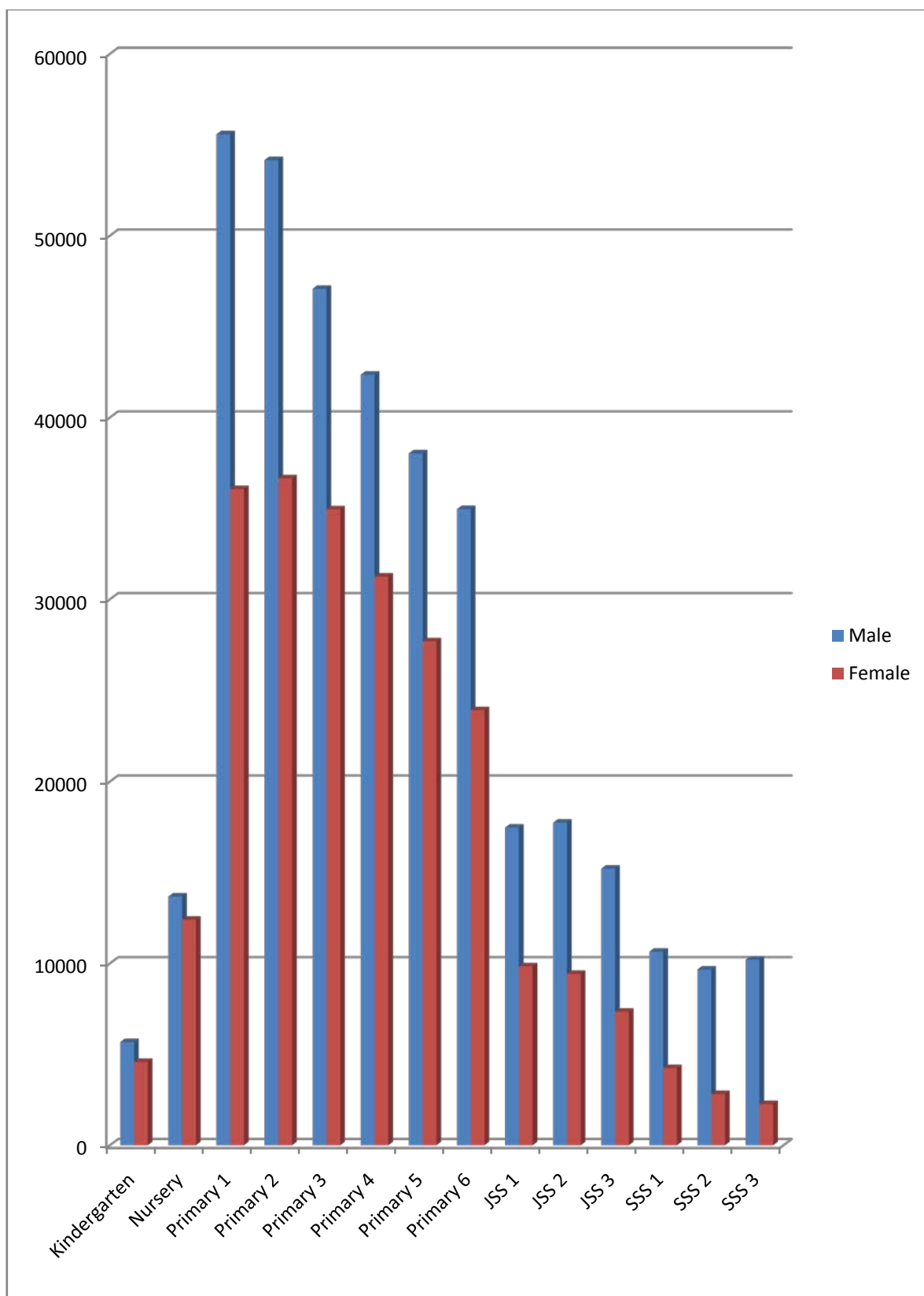


Table 3.16 Enrolment of special needs children in public primary schools

Type of disability	Class 1	Class 2	Class 3	Class 4	Class 5	Class 6
Blind / visually impaired	49	64	82	61	46	38
Physically challenged	215	180	154	131	114	103
Hearing / speech impaired	91	126	109	100	84	80
Mentally challenged	72	109	70	65	44	45
TOTAL *	427	479	415	357	288	266

* Totals may include same student more than once if student has multiple disabilities

Table 3.17 Enrolment of special needs children in public secondary schools

Type of disability	JSS 1	JSS 2	JSS 3	SSS 1	SSS 2	SSS 3
Blind / visually impaired	21	9	22	4	6	4
Physically challenged	44	57	67	29	35	14
Hearing / speech impaired	39	25	21	1	12	7
Mentally challenged	6	13	16	3	9	2
TOTAL *	110	104	126	37	62	27

* Totals may include same student more than once if student has multiple disabilities

Table 3.18 Repeaters in public primary schools by LGEA, class and sex

LGEA	Class 1		Class 2		Class 3		Class 4		Class 5		Class 6	
	Boys	Girls	Boys	Girls	Boys	Girls	Boys	Girls	Boys	Girls	Boys	Girls
AUYO	2	6	48	8	12	0	2	0	15	3	6	0
BABURA	26	14	25	23	16	23	18	12	14	16	21	20
BIRNIN KUDU	32	28	11	14	9	11	14	5	8	9	7	11
BIRNIWA	61	26	37	32	27	37	12	18	19	10	0	0
BUJI	30	2	3	3	8	2	5	2	5	5	9	7
DUTSE	41	38	36	36	31	24	22	29	13	18	36	21
GAGARAWA	17	10	8	8	0	2	4	6	3	4	14	5
GARKI	126	12	37	35	42	35	39	28	111	31	24	24
GUMEL	18	19	8	11	9	9	12	25	7	7	2	2
GURI	31	28	37	24	34	24	19	13	0	0	0	0
GWARAM	40	28	35	30	21	17	15	13	19	9	12	2
GWIWA	31	18	13	11	7	3	2	0	5	3	3	2
HADEJIA	61	46	82	69	88	74	78	79	72	51	18	13
JAHUN	10	6	5	5	5	6	2	5	6	3	1	4
KAFIN HAUSA	0	0	0	2	0	0	2	9	3	9	12	0
KAUGAMA	61	53	106	83	73	52	67	42	36	17	15	6
KAZAURE	0	15	38	20	7	4	7	5	7	4	14	5
KIRI KASAMMA	29	26	41	33	12	14	12	43	13	9	14	7
KIYAWA	343	12	44	23	65	20	33	24	45	11	46	4
MAIGATARI	87	91	122	130	69	86	56	53	39	20	2	0
MALLAM MADORI	57	44	54	37	42	36	24	48	64	81	4	11
MIGA	0	0	9	5	13	11	6	6	11	5	6	0
RINGIM	66	60	66	47	77	54	77	60	83	58	77	53
RONI	13	8	15	42	17	46	12	41	7	3	14	7
SULE TANKARKAR	7	2	10	0	0	0	1	0	0	0	2	0
TAURA	10	5	19	14	20	15	15	12	30	21	15	7
YANKWASHI	2	1	1	1	3	2	0	0	2	0	0	2
TOTAL	1,201	598	910	746	707	607	556	578	637	407	374	213

Table 3.19 Repeaters in public secondary schools by LGEA, class and sex

LGEA	JSS 1		JSS 2		JSS 3		SSS 1		SSS 2		SSS 3	
	Boys	Girls	Boys	Girls	Boys	Girls	Boys	Girls	Boys	Girls	Boys	Girls
AUYO	0	0	4	2	0	0	1	0	3	0	0	0
BABURA	6	8	14	4	0	0	1	3	11	0	0	0
BIRNIN KUDU	9	5	13	17	1	0	45	0	31	0	4	0
BIRNIWA	20	14	3	1	0	0	0	0	0	0	0	0
BUJI	10	5	5	0	0	0	0	0	0	0	0	0
DUTSE	80	6	64	16	0	15	131	0	10	2	0	0
GAGARAWA	12	2	13	0	1	0	0	0	3	0	0	0
GARKI	0	0	0	0	0	0	5	1	4	0	2	0
GUMEL	7	4	30	10	25	3	77	0	17	0	0	0
GURI	23	0	16	3	3	0	30	0	2	0	2	0
GWARAM	8	0	12	3	6	0	30	0	2	0	7	0
GWIWA	4	1	3	0	2	1	0	0	0	0	0	0
HADEJIA	6	3	9	12	3	8	83	0	0	33	0	0
JAHUN	39	0	36	0	5	0	18	0	4	14	0	0
KAFIN HAUSA	0	0	0	0	0	0	0	0	16	0	1	0
KAUGAMA	12	0	6	0	0	0	9	0	2	0	0	0
KAZAURE	0	10	0	5	0	0	5	0	5	0	5	0
KIRI KASAMMA	0	0	6	2	0	0	7	0	0	0	0	0
KIYAWA	20	4	12	6	0	0	0	0	8	0	0	0
MAIGATARI	11	4	3	0	0	0	0	0	0	0	0	0
MALLAM MADORI	9	5	22	5	10	5	5	0	2	0	0	0
MIGA	35	7	12	5	1	0	0	0	0	0	0	0
RINGIM	5	1	28	1	10	1	2	0	6	0	5	0
RONI	1	1	1	1	0	0	7	0	7	0	0	0
SULE TANKARKAR	8	2	3	0	3	0	0	20	0	19	0	0
TAURA	40	0	15	2	8	6	0	0	0	1	0	0
YANKWASHI	8	1	7	1	0	0	170	0	15	37	0	0
TOTAL	373	83	337	96	78	39	626	24	148	106	26	0

4. Teachers

Table 4.1 Number of public pre primary school teachers by sex and LGEA

LGEA	Public Teachers		Public Qualified	
	Total	Female	Total	Female
AUYO	0	0	0	0
BABURA	4	2	0	1
BIRNIN KUDU	9	6	4	4
BIRNIWA	9	6	4	4
BUJI	10	0	1	0
DUTSE	10	8	2	1
GAGARAWA	4	2	3	1
GARKI	2	1	0	0
GUMEL	11	8	9	7
GURI	0	0	0	0
GWARAM	14	9	5	4
GWIWA	2	0	0	0
HADEJIA	11	8	4	3
JAHUN	4	1	1	0
KAFIN HAUSA	1	0	0	0
KAUGAMA	1	0	0	0
KAZAURE	48	42	15	15
KIRI KASAMMA	3	0	0	0
KIYAWA	0	0	0	0
MAIGATARI	2	1	0	0
MALLAM MADORI	6	5	2	2
MIGA	0	0	0	0
RINGIM	4	0	0	0
RONI	0	0	0	0
SULE TANKARKAR	8	4	1	0
TAURA	3	1	1	0
YANKWASHI	0	0	0	0
TOTAL	166	104	52	42

Table 4.2 Pupil-teacher ratio by LGEA, pre-public primary classes

LGEA	All Teachers	Qualified teachers
AUYO	N/A	N/A
BABURA	361	N/A
BIRNIN KUDU	151	340
BIRNIWA	40	91
BUJI	61	610
DUTSE	415	2075
GAGARAWA	185	246
GARKI	258	N/A
GUMEL	45	55
GURI	N/A	N/A
GWARAM	223	624
GWIWA	189	N/A
HADEJIA	64	175
JAHUN	455	1821
KAFIN HAUSA	2286	N/A
KAUGAMA	1445	N/A
KAZAURE	29	94
KIRI KASAMMA	1328	N/A
KIYAWA	N/A	N/A
MAIGATARI	631	N/A
MALLAM MADORI	258	773
MIGA	N/A	N/A
RINGIM	450	N/A
RONI	N/A	N/A
SULE TANKARKAR	89	712
TAURA	426	1279
YANKWASHI	N/A	N/A
JIGAWA STATE	208	664

Table 4.3 Number of public primary school teachers by sex and LGEA

LGEA	Public Teachers		Public Qualified	
	Total	Female	Total	Female
AUYO	451	17	276	8
BABURA	675	44	136	6
BIRNIN KUDU	523	122	182	27
BIRNIWA	525	115	190	32
BUJI	245	13	59	1
DUTSE	747	130	276	66
GAGARAWA	287	7	123	4
GARKI	538	11	163	3
GUMEL	395	142	243	96
GURI	284	22	46	3
GWARAM	782	84	195	16
GWIWA	228	13	38	0
HADEJIA	690	219	455	131
JAHUN	423	45	130	15
KAFIN HAUSA	812	64	428	33
KAUGAMA	762	60	212	12
KAZAURE	807	253	184	49
KIRI KASAMMA	701	26	212	13
KIYAWA	324	21	87	5
MAIGATARI	396	26	184	8
MALLAM MADORI	647	88	239	46
MIGA	229	10	48	4
RINGIM	645	80	328	51
RONI	359	30	63	4
SULE TANKARKAR	628	32	248	19
TAURA	393	12	141	4
YANKWASHI	328	40	38	23
TOTAL	13,824	1,726	4,924	679

Excludes teachers teaching pre-primary only

Qualified to exclude Grade 2 in line with Federal Policy

Table 4.4 Pupil-teacher ratio by LGEA, public primary schools

LGEA	All Teachers	Qualified teachers
AUYO	29	47
BABURA	28	140
BIRNIN KUDU	49	141
BIRNIWA	24	66
BUJI	34	142
DUTSE	42	112
GAGARAWA	41	96
GARKI	30	99
GUMEL	39	64
GURI	36	222
GWARAM	38	152
GWIWA	38	227
HADEJIA	26	40
JAHUN	43	141
KAFIN HAUSA	39	73
KAUGAMA	32	113
KAZAURE	20	88
KIRI KASAMMA	27	88
KIYAWA	51	190
MAIGATARI	42	90
MALLAM MADORI	25	69
MIGA	51	242
RINGIM	42	82
RONI	26	150
SULE TANKARKAR	38	97
TAURA	36	101
YANKWASHI	23	202
JIGAWA STATE	34	96

Excludes teachers teaching pre-primary only

Qualified to exclude Grade 2 in line with Federal Policy

Chart 4.1 Pupil teacher ratio by LGEA (public primary)

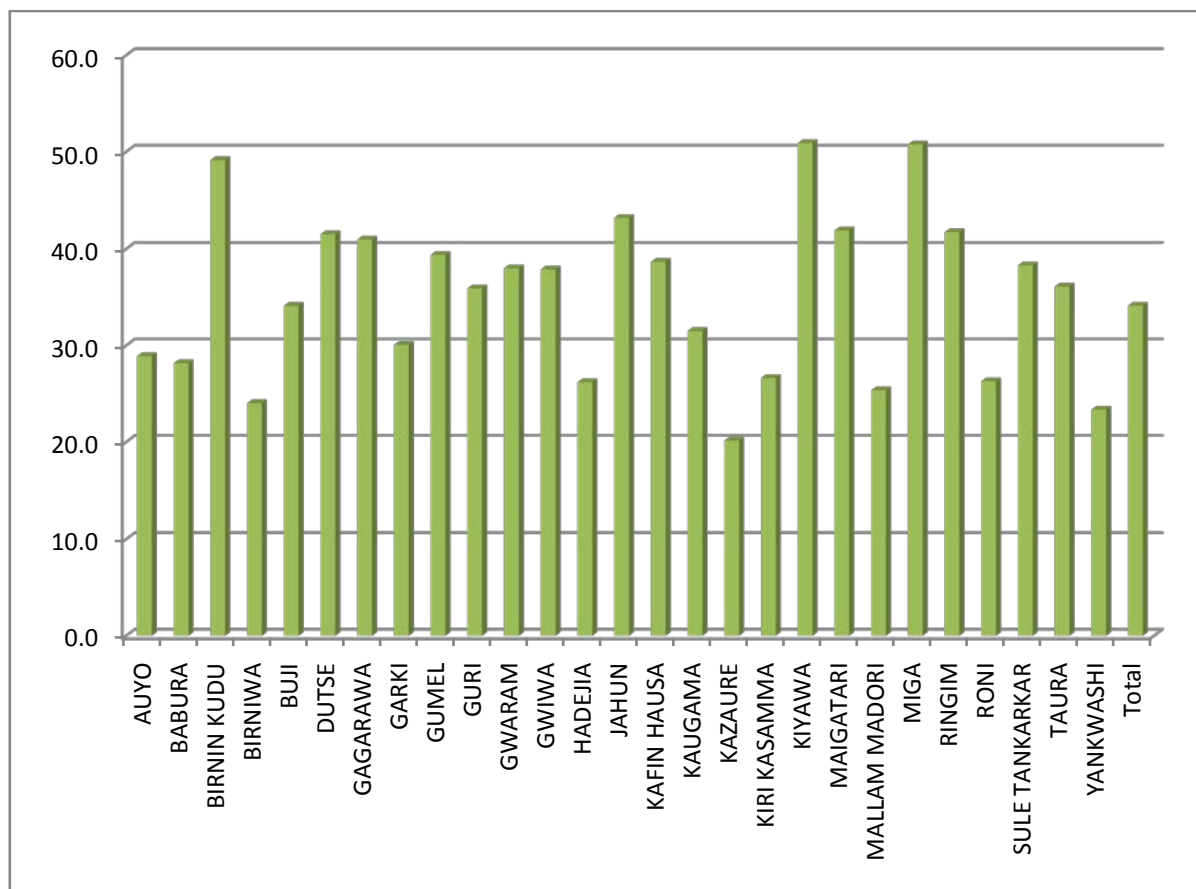


Table 4.5 Number of public junior secondary school teachers by sex and LGEA

LGEA	Public Teachers		Public Qualified	
	Total	Female	Total	Female
AUYO	116	3	100	2
BABURA	86	3	77	1
BIRNIN KUDU	139	7	85	5
BIRNIWA	109	25	97	19
BUJI	46	0	34	0
DUTSE	257	25	211	21
GAGARAWA	44	3	38	2
GARKI	87	3	77	3
GUMEL	132	33	119	31
GURI	123	15	65	2
GWARAM	211	12	163	7
GWIWA	50	2	36	2
HADEJIA	178	19	159	17
JAHUN	124	1	100	1
KAFIN HAUSA	150	3	132	2
KAUGAMA	111	6	81	3
KAZAURE	139	16	101	9
KIRI KASAMMA	105	0	88	0
KIYAWA	54	1	43	1
MAIGATARI	86	7	71	0
MALLAM MADORI	135	5	126	3
MIGA	82	5	53	2
RINGIM	127	7	114	7
RONI	128	14	103	12
SULE TANKARKAR	138	4	112	4
TAURA	118	3	102	2
YANKWASHI	123	17	84	12
TOTAL	3,198	239	2,571	170

Qualified to exclude Grade 2 in line with Federal Policy

Table 4.6 Public Pupil-teacher ratio by type and LGEA, junior secondary schools

LGEA	All Teachers	Qualified teachers
AUYO	14	17
BABURA	24	27
BIRNIN KUDU	28	46
BIRNIWA	12	14
BUJI	17	22
DUTSE	24	29
GAGARAWA	22	26
GARKI	21	23
GUMEL	28	31
GURI	19	36
GWARAM	28	36
GWIWA	14	19
HADEJIA	45	50
JAHUN	34	43
KAFIN HAUSA	25	28
KAUGAMA	25	34
KAZAURE	24	33
KIRI KASAMMA	13	16
KIYAWA	38	48
MAIGATARI	27	32
MALLAM MADORI	22	24
MIGA	16	24
RINGIM	30	34
RONI	10	13
SULE TANKARKAR	27	34
TAURA	30	34
YANKWASHI	14	21
JIGAWA STATE	24	30

Qualified to exclude Grade 2 in line with Federal Policy

Table 4.7 Number of public senior secondary school teachers by sex and LGEA

LGEA	Public Teachers		Public Qualified	
	Total	Female	Total	Female
AUYO	34	0	27	0
BABURA	65	1	65	1
BIRNIN KUDU	129	20	83	10
BIRNIWA	82	17	69	7
BUJI	24	2	24	2
DUTSE	121	18	119	17
GAGARAWA	30	2	29	2
GARKI	47	1	46	1
GUMEL	146	18	132	16
GURI	15	1	15	1
GWARAM	157	39	96	8
GWIWA	19	0	19	0
HADEJIA	256	13	240	6
JAHUN	111	16	98	3
KAFIN HAUSA	105	5	86	4
KAUGAMA	80	2	80	2
KAZAURE	59	11	48	10
KIRI KASAMMA	21	6	19	0
KIYAWA	30	1	30	0
MAIGATARI	70	1	63	0
MALLAM MADORI	59	10	57	10
MIGA	21	1	19	1
RINGIM	137	1	121	1
RONI	55	2	49	2
SULE TANKARKAR	141	20	134	8
TAURA	116	4	101	2
YANKWASHI	15	0	13	0
TOTAL	2,145	212	1,882	114

Qualified to exclude Grade 2 in line with Federal Policy

Table 4.8 Pupil-teacher ratio by type and LGEA, public senior secondary schools

LGEA	All Teachers	Qualified teachers
BABURA	75	95
BIRNIN KUDU	28	28
BIRNIWA	26	40
BUJI	7	9
DUTSE	16	16
GAGARAWA	34	35
GARKI	14	14
GUMEL	30	30
GURI	21	23
GWARAM	13	13
GWIWA	24	40
HADEJIA	19	19
JAHUN	36	39
KAFIN HAUSA	29	33
KAUGAMA	26	32
KAZAURE	34	34
KIRI KASAMMA	27	33
KIYAWA	15	17
MAIGATARI	26	26
MALLAM MADORI	36	40
MIGA	9	9
RINGIM	5	6
RONI	32	36
SULE TANKARKAR	35	39
TAURA	21	22
YANKWASHI	20	23
JIGAWA STATE	45	52

Qualified to exclude Grade 2 in line with Federal Policy

Chart 4.2 Teachers by gender and qualification (all levels, public sector)

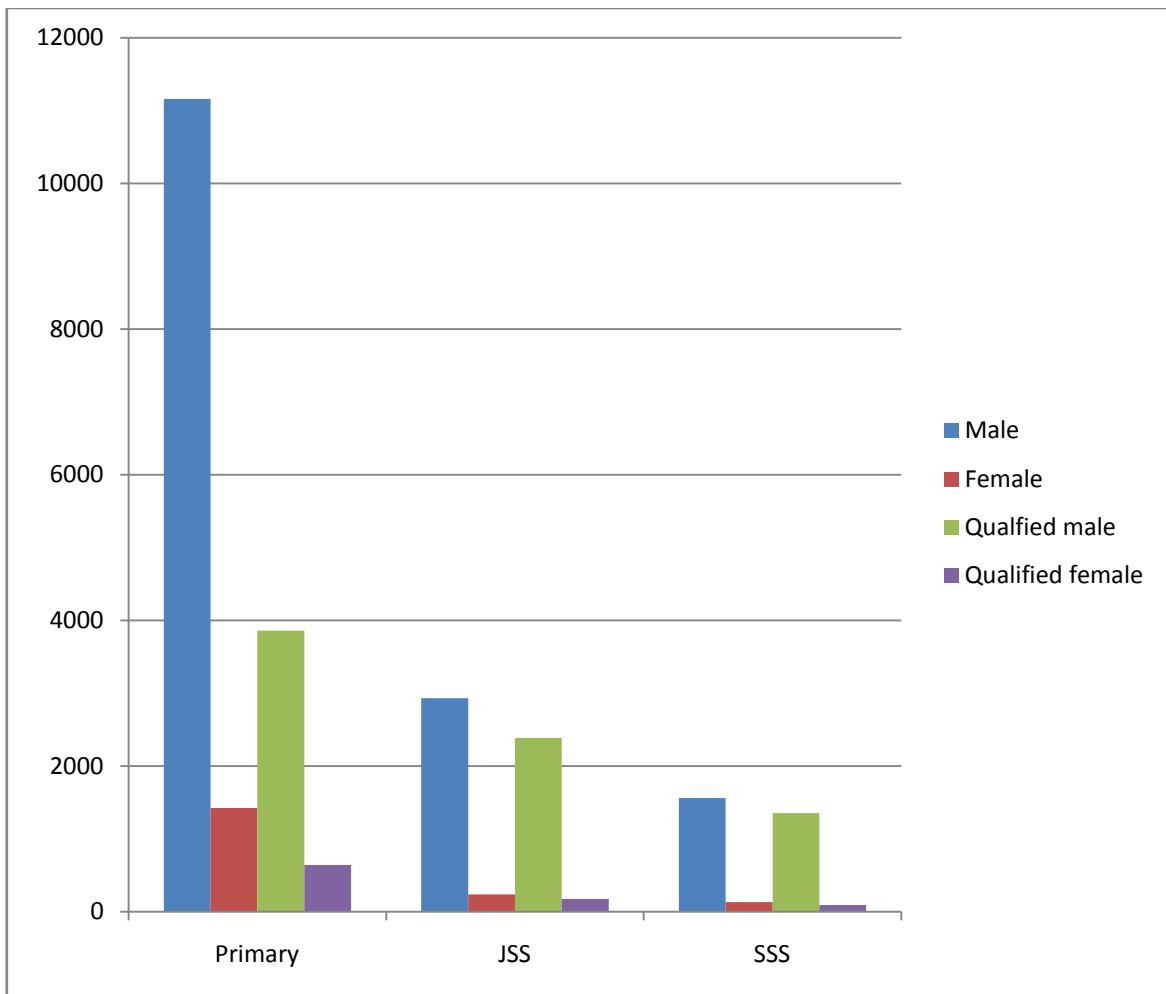


Table 4.9 Number of private schools teachers by sex and LGEA

LGEA	Public Teachers		Public Qualified	
	Total	Female	Total	Female
BIRNIN KUDU	71	36	65	30
BUJI	6	0	0	0
DUTSE	182	92	162	79
GARKI	47	10	36	4
GUMEL	110	42	110	42
GWARAM	15	4	11	3
GWIWA	32	0	0	0
HADEJIA	225	50	160	32
JAHUN	47	19	41	17
KAFIN HAUSA	24	7	11	3
KAZAURE	72	36	68	32
KIYAWA	21	15	21	15
MAIGATARI	39	4	15	1
MALLAM MADORI	49	5	25	4
MIGA	10	6	10	6
RINGIM	25	13	20	8
RONI	8	0	6	0
TAURA	15	6	7	3
Total	998	345	768	279

Table 4.10 Pupil-teacher ratio by type and LGEA, private schools

LGEA	All Teachers	Qualified
BIRNIN KUDU	14	15
BUJI	31	N/A
DUTSE	19	1
GARKI	7	98
GUMEL	20	3
GWARAM	38	197
GWIWA	53	N/A
HADEJIA	26	11
JAHUN	18	144
KAFIN HAUSA	52	75
KAZAURE	22	18
KIYAWA	21	75
MAIGATARI	38	29
MALLAM MADORI	33	60
MIGA	31	160
RINGIM	26	16
RONI	18	107
TAURA	59	21
TOTAL	26	33

Table 4.11 Percentage of long-term absent teachers

Percentage of long-term absent teachers on:	Primary		Junior secondary		Senior secondary	
	Urban %	Rural %	Urban %	Rural %	Urban %	Rural %
Maternity leave	21.9	19.1	16.2	11.8	0.9	2.7
Sick leave	13.9	17.2	10.8	45.6	8.3	20.3
Training	30.3	32.7	67.6	35.3	15.7	13.5
Secondment	31.8	27.3	2.7	4.4	74.1	62.2
Unauthorised	2.2	3.7	2.7	2.9	0.9	1.4

Table 4.12 Percentage of teachers by highest level of education attained

Percentage of teachers by highest level of education attained:	Primary		Junior secondary		Senior secondary	
	Urban %	Rural %	Urban %	Rural %	Urban %	Rural %
Below SSCE	3.8	7.0	3.5	4.2	2.4	2.3
SSCE / WASC	36.6	57.3	4.3	15.7	0.1	0.6
OND / Diploma	52.7	32.9	62.4	62.1	41.4	46.4
Degree / HND / Graduate	6.8	2.9	29.8	18.0	56.1	50.7

Table 4.13 Percentage of teachers by source of salary

Percentage of teachers by source of salary:	Primary		Junior secondary		Senior secondary	
	Urban %	Rural %	Urban %	Rural %	Urban %	Rural %
Federal Government: FTS	3.2	1.5	2.0	1.7	0.0	0.0
State Government – on the school's payroll	79.7	90.5	59.5	75.8	50.1	49.7
State Government – on another school's payroll	13.7	7.2	31.8	18.1	41.2	38.7
Other, for example PTA or community	1.4	0.2	0.4	0.0	1.0	0.0
No salary, for example volunteer or NYSC	1.9	0.6	6.3	4.4	7.8	11.6

Table 4.14 Number of teachers who attended training seminar / workshop

Number of teachers who attended training workshop / seminar in last 12 months	Primary		Junior secondary		Senior secondary	
	Urban %	Rural %	Urban %	Rural %	Urban %	Rural %
Total	1,061	1,295	444	437	230	184

5. Facilities

Table 5.1 Number of classrooms by school type and LGEA

LGEA	Number of Usable Classrooms				% Usable		
	Primary	JSS	SSS	Private	Primary	JSS	SSS
AUYO	231	29	0	0	94.8	93.1	0.0
BABURA	522	35	20	0	80.5	88.6	100.0
BIRNIN KUDU	326	45	44	48	86.5	100.0	100.0
BIRNIWA	398	64	44	0	84.4	100.0	95.5
BUJI	187	17	11	102	98.9	100.0	100.0
DUTSE	555	141	111	18	88.6	99.3	96.4
GAGARAWA	245	22	3	0	80.0	95.5	100.0
GARKI	370	53	40	0	82.2	98.1	100.0
GUMEL	206	56	46	50	91.7	100.0	93.5
GURI	187	45	5	0	89.8	100.0	100.0
GWARAM	512	118	58	11	93.4	88.1	100.0
GWIWA	182	25	12	14	96.2	100.0	100.0
HADEJIA	249	83	21	99	94.4	97.6	100.0
JAHUN	269	57	53	16	94.4	89.5	100.0
KAFIN HAUSA	461	50	63	5	90.5	86.0	96.8
KAUGAMA	245	28	40	0	73.9	85.7	100.0
KAZAURE	287	62	42	33	95.1	100.0	100.0
KIRI KASAMMA	196	24	5	0	84.7	95.8	100.0
KIYAWA	317	29	25	0	61.8	93.1	92.0
MAIGATARI	312	49	20	11	87.5	100.0	100.0
MALLAM MADORI	318	64	9	27	83.6	82.8	88.9
MIGA	170	28	3	6	88.2	100.0	100.0
RINGIM	352	57	74	10	96.3	78.9	54.1
RONI	193	51	39	0	97.4	100.0	100.0
SULE TANKARKAR	418	52	44	7	66.7	96.2	97.7
TAURA	234	62	60	0	80.3	93.5	100.0
YANKWASHI	129	39	9	0	97.7	100.0	100.0
TOTAL	7,640	1,385	884	457	86.4	94.7	94.5

* Question of usability not asked in Private school census so assumed 100% Usable

Table 5.2 Pupil-classroom ratio by school type and LGEA

LGEA	Pre Primary and Primary	JSS	SSS	Private (all levels)
AUYO	61	46	45	N/A
BABURA	83	66	45	N/A
BIRNIN KUDU	97	84	76	21
BIRNIWA	39	21	12	N/A
BUJI	50	45	23	N/A
DUTSE	69	42	31	121
GAGARAWA	62	47	43	N/A
GARKI	57	34	28	N/A
GUMEL	89	65	58	30
GURI	64	52	39	N/A
GWARAM	67	57	61	27
GWIWA	50	27	22	121
HADEJIA	78	83	143	42
JAHUN	78	83	50	20
KAFIN HAUSA	67	86	34	247
KAUGAMA	138	114	57	N/A
KAZAURE	56	53	34	32
KIRI KASAMMA	125	61	17	N/A
KIYAWA	91	77	33	N/A
MAIGATARI	64	43	92	132
MALLAM MADORI	66	56	48	46
MIGA	77	42	23	46
RINGIM	69	85	73	35
RONI	51	26	42	N/A
SULE TANKARKAR	89	75	50	N/A
TAURA	80	60	36	N/A
YANKWASHI	63	45	56	N/A
TOTAL	71	57	47	40

Table 5.3 Selective characteristics of public primary school facilities

LGEA	% Major Repairs	% Sufficient Seating	% Good Blackboard
AUYO	27.3	39.0	30.3
BABURA	35.2	0.0	15.5
BIRNIN KUDU	35.6	22.4	46.0
BIRNIWA	26.1	11.6	30.9
BUJI	11.8	52.4	65.2
DUTSE	31.2	27.0	41.3
GAGARAWA	26.0	36.7	31.2
GARKI	21.0	33.3	47.3
GUMEL	50.5	24.2	46.0
GURI	20.3	31.0	57.8
GWARAM	33.6	30.9	39.8
GWIWA	6.0	28.0	35.2
HADEJIA	20.1	43.4	45.8
JAHUN	43.1	7.5	30.3
KAFIN HAUSA	38.4	87.4	91.5
KAUGAMA	20.4	80.4	84.3
KAZAURE	17.1	43.9	47.0
KIRI KASAMMA	27.2	50.8	67.5
KIYAWA	15.3	11.7	34.4
MAIGATARI	41.0	24.8	45.6
MALLAM MADORI	32.4	25.2	27.7
MIGA	12.9	27.6	41.2
RINGIM	23.3	32.4	40.3
RONI	19.9	19.4	57.1
SULE TANKARKAR	28.0	14.6	22.7
TAURA	19.2	42.3	52.1
YANKWASHI	14.7	27.1	47.3
JIGAWA STATE	27.2	33.2	45.4

Table 5.4 Selective characteristics of public JSS school facilities

LGEA	% Major Repairs	% Sufficient Seating	% Good Blackboard
AUYO	13.8	34.5	24.1
BABURA	25.7	45.7	71.4
BIRNIN KUDU	15.6	46.7	71.1
BIRNIWA	31.3	21.9	50.0
BUJI	0.0	52.9	88.2
DUTSE	6.4	60.0	78.6
GAGARAWA	13.6	50.0	59.1
GARKI	15.1	50.9	81.1
GUMEL	53.6	26.8	51.8
GURI	11.1	44.4	71.1
GWARAM	22.0	31.4	54.2
GWIWA	44.0	28.0	24.0
HADEJIA	33.7	20.5	27.7
JAHUN	26.3	19.3	59.6
KAFIN HAUSA	20.0	44.0	44.0
KAUGAMA	18.5	100.0	96.3
KAZAURE	0.0	37.1	43.5
KIRI KASAMMA	16.7	54.2	54.2
KIYAWA	24.1	17.2	48.3
MAIGATARI	14.3	49.0	61.2
MALLAM MADORI	25.0	57.8	68.8
MIGA	14.3	46.4	39.3
RINGIM	10.2	16.3	51.0
RONI	17.6	19.6	86.3
SULE TANKARKAR	7.8	33.3	64.7
TAURA	1.6	61.3	66.1
YANKWASHI	17.9	38.5	43.6
JIGAWA STATE	18.5	40.1	59.1

Table 5.5 Selective characteristics of public SSS school facilities

LGEA	% Major Repairs	% Sufficient Seating	% Good Blackboard
AUYO	2.0	70.0	81.0
BABURA	0.0	0.0	100.0
BIRNIN KUDU	10.5	60.5	60.5
BIRNIWA	0.0	66.7	100.0
BUJI	0.0	100.0	100.0
DUTSE	0.0	93.5	99.1
GAGARAWA	0.0	100.0	100.0
GARKI	0.0	100.0	100.0
GUMEL	2.4	97.6	100.0
GURI	0.0	0.0	60.0
GWARAM	0.0	60.3	93.1
GWIWA	8.3	25.0	91.7
HADEJIA	0.0	0.0	100.0
JAHUN	5.7	64.2	54.7
KAFIN HAUSA	0.0	69.8	60.3
KAUGAMA	10.7	35.7	71.4
KAZAURE	0.0	78.6	54.8
KIRI KASAMMA	0.0	100.0	0.0
KIYAWA	0.0	43.5	100.0
MAIGATARI	0.0	100.0	100.0
MALLAM MADORI	0.0	11.1	100.0
MIGA	100.0	100.0	0.0
RINGIM	0.0	100.0	75.0
RONI	0.0	41.0	82.1
SULE TANKARKAR	0.0	39.5	58.1
TAURA	0.0	75.0	75.0
YANKWASHI	0.0	33.3	100.0
JIGAWA STATE	1.8	69.0	80.8

Table 5.6 Main source of safe water in public primary schools

LGEA	Percentage of Schools with:					Total
	Piped Water	Borehole	Well	Other	No Source	
AUYO	8.3	33.3	0.0	2.1	56.3	100.0
BABURA	8.0	20.0	4.0	0.0	68.0	100.0
BIRNIN KUDU	10.6	13.8	9.6	3.2	62.8	100.0
BIRNIWA	6.3	73.0	1.6	0.0	19.0	100.0
BUJI	2.6	53.8	0.0	0.0	43.6	100.0
DUTSE	2.6	25.4	7.9	1.8	62.3	100.0
GAGARAWA	5.8	17.3	0.0	0.0	76.9	100.0
GARKI	10.0	40.0	11.0	0.0	39.0	100.0
GUMEL	4.7	32.6	2.3	2.3	58.1	100.0
GURI	5.4	53.6	0.0	16.1	25.0	100.0
GWARAM	0.9	26.5	17.7	7.1	47.8	100.0
GWIWA	10.0	17.5	5.0	5.0	62.5	100.0
HADEJIA	34.6	50.0	0.0	3.8	11.5	100.0
JAHUN	7.4	22.1	4.4	1.5	64.7	100.0
KAFIN HAUSA	4.8	12.5	0.0	3.8	78.8	100.0
KAUGAMA	22.0	28.0	6.0	0.0	44.0	100.0
KAZAURE	5.3	78.9	7.9	0.0	7.9	100.0
KIRI KASAMMA	6.9	59.7	0.0	0.0	33.3	100.0
KIYAWA	7.7	14.1	6.4	2.6	69.2	100.0
MAIGATARI	10.3	42.5	3.4	0.0	43.7	100.0
MALLAM MADORI	9.2	20.0	0.0	1.5	69.2	100.0
MIGA	2.1	37.5	2.1	0.0	58.3	100.0
RINGIM	18.8	32.5	0.0	1.3	47.5	100.0
RONI	3.0	27.3	18.2	3.0	48.5	100.0
SULE TANKARKAR	3.5	11.3	1.7	2.6	80.9	100.0
TAURA	10.5	42.1	0.0	0.0	47.4	100.0
YANKWASHI	7.1	10.7	32.1	0.0	50.0	100.0
JIGAWA STATE	7.7	31.2	5.1	2.3	53.6	100.0

Table 5.7 Main source of safe water in JSS

LGEA	Percentage of Schools with:					Total
	Piped Water	Borehole	Well	Other	No Source	
AUYO	25.0	50.0	0.0	0.0	25.0	100.0
BABURA	10.0	50.0	0.0	0.0	40.0	100.0
BIRNIN KUDU	17.6	5.9	23.5	11.8	41.2	100.0
BIRNIWA	10.0	80.0	0.0	0.0	10.0	100.0
BUJI	20.0	0.0	0.0	0.0	80.0	100.0
DUTSE	7.4	44.4	3.7	7.4	37.0	100.0
GAGARAWA	37.5	25.0	0.0	0.0	37.5	100.0
GARKI	15.4	69.2	0.0	0.0	15.4	100.0
GUMEL	0.0	71.4	0.0	0.0	28.6	100.0
GURI	16.7	50.0	0.0	16.7	16.7	100.0
GWARAM	0.0	50.0	22.7	4.5	22.7	100.0
GWIWA	22.2	33.3	0.0	0.0	44.4	100.0
HADEJIA	50.0	25.0	0.0	12.5	12.5	100.0
JAHUN	23.5	41.2	0.0	0.0	35.3	100.0
KAFIN HAUSA	33.3	40.0	0.0	6.7	20.0	100.0
KAUGAMA	40.0	60.0	0.0	0.0	0.0	100.0
KAZAURE	16.7	58.3	8.3	0.0	16.7	100.0
KIRI KASAMMA	0.0	90.0	0.0	0.0	10.0	100.0
KIYAWA	33.3	22.2	0.0	11.1	33.3	100.0
MAIGATARI	33.3	58.3	0.0	0.0	8.3	100.0
MALLAM MADORI	30.0	50.0	0.0	0.0	20.0	100.0
MIGA	0.0	75.0	0.0	0.0	25.0	100.0
RINGIM	16.7	58.3	8.3	8.3	8.3	100.0
RONI	0.0	41.7	16.7	16.7	25.0	100.0
SULE TANKARKAR	20.0	20.0	0.0	6.7	53.3	100.0
TAURA	0.0	66.7	0.0	0.0	33.3	100.0
YANKWASHI	9.1	36.4	27.3	0.0	27.3	100.0
JIGAWA STATE	16.8	46.7	5.3	4.4	26.8	100.0

Table 5.8 Main source of safe water in SSS

LGEA	Percentage of Schools with:					Total
	Piped Water	Borehole	Well	Other	No Source	
AUYO	28.0	53.5	3.5	8.0	9.0	100.0
BABURA	0.0	100.0	0.0	0.0	0.0	100.0
BIRNIN KUDU	0.0	40.0	0.0	60.0	0.0	100.0
BIRNIWA	50.0	50.0	0.0	0.0	0.0	100.0
BUJI	0.0	33.3	0.0	0.0	66.7	100.0
DUTSE	12.5	37.5	25.0	12.5	12.5	100.0
GAGARAWA	100.0	0.0	0.0	0.0	0.0	100.0
GARKI	33.3	66.7	0.0	0.0	0.0	100.0
GUMEL	66.7	33.3	0.0	0.0	0.0	100.0
GURI	0.0	100.0	0.0	0.0	0.0	100.0
GWARAM	11.1	55.6	11.1	0.0	22.2	100.0
GWIWA	0.0	100.0	0.0	0.0	0.0	100.0
HADEJIA	50.0	50.0	0.0	0.0	0.0	100.0
JAHUN	14.3	85.7	0.0	0.0	0.0	100.0
KAFIN HAUSA	42.9	28.6	0.0	14.3	14.3	100.0
KAUGAMA	40.0	60.0	0.0	0.0	0.0	100.0
KAZAURE	66.7	33.3	0.0	0.0	0.0	100.0
KIRI KASAMMA	0.0	100.0	0.0	0.0	0.0	100.0
KIYAWA	50.0	50.0	0.0	0.0	0.0	100.0
MAIGATARI	100.0	0.0	0.0	0.0	0.0	100.0
MALLAM MADORI	33.3	33.3	0.0	33.3	0.0	100.0
MIGA	0.0	100.0	0.0	0.0	0.0	100.0
RINGIM	28.6	57.1	0.0	0.0	14.3	100.0
RONI	0.0	0.0	0.0	66.7	33.3	100.0
SULE TANKARKAR	40.0	60.0	0.0	0.0	0.0	100.0
TAURA	25.0	75.0	0.0	0.0	0.0	100.0
YANKWASHI	0.0	50.0	0.0	0.0	50.0	100.0
JIGAWA STATE	27.3	52.5	3.0	8.1	9.1	100.0

Table 5.8 Toilets in public primary schools

LGEA	Schools with (%)					Total	Pupil Toilet Ratio
	No toilet	One toilet	Two toilet	Three toilets	Four or more		
AUYO	89.8	0.0	2.0	0.0	8.2	100.0	534
BABURA	84.6	0.0	7.7	0.0	7.7	100.0	312
BIRNIN KUDU	69.1	0.0	3.2	3.2	24.5	100.0	188
BIRNIWA	56.7	1.5	0.0	0.0	41.8	100.0	92
BUJI	43.6	0.0	28.2	12.8	15.4	100.0	145
DUTSE	85.3	0.9	1.7	0.0	12.1	100.0	364
GAGARAWA	73.2	3.6	7.1	3.6	12.5	100.0	330
GARKI	89.1	1.0	2.0	0.0	7.9	100.0	442
GUMEL	76.7	0.0	0.0	0.0	23.3	100.0	133
GURI	53.4	3.4	6.9	1.7	34.5	100.0	95
GWARAM	75.7	2.6	5.2	3.5	13.0	100.0	245
GWIWA	53.7	2.4	0.0	9.8	34.1	100.0	129
HADEJIA	14.8	7.4	7.4	11.1	59.3	100.0	187
JAHUN	94.4	0.0	1.4	1.4	2.8	100.0	1980
KAFIN HAUSA	94.4	0.0	0.9	2.8	1.9	100.0	609
KAUGAMA	72.9	4.3	4.3	1.4	17.1	100.0	367
KAZAURE	13.2	2.6	26.3	7.9	50.0	100.0	107
KIRI KASAMMA	68.0	1.3	6.7	2.7	21.3	100.0	213
KIYAWA	94.9	0.0	0.0	2.6	2.6	100.0	988
MAIGATARI	73.6	0.0	1.1	2.3	23.0	100.0	159
MALLAM MADORI	62.1	0.0	9.1	9.1	19.7	100.0	215
MIGA	79.2	4.2	6.3	6.3	4.2	100.0	611
RINGIM	80.2	0.0	2.5	1.2	16.0	100.0	777
RONI	80.5	2.4	4.9	1.8	10.4	100.0	330
SULE TANKARKAR	94.8	2.6	0.0	0.0	2.6	100.0	121
TAURA	64.9	1.8	0.0	3.5	29.8	100.0	1458
YANKWASHI	80.0	3.3	0.0	3.3	13.3	100.0	113
JIGAWA STATE	75.2	1.4	3.9	2.8	16.6	100.0	317

Chart 5.1 Pupil Toilet Ratio (Public Primary)

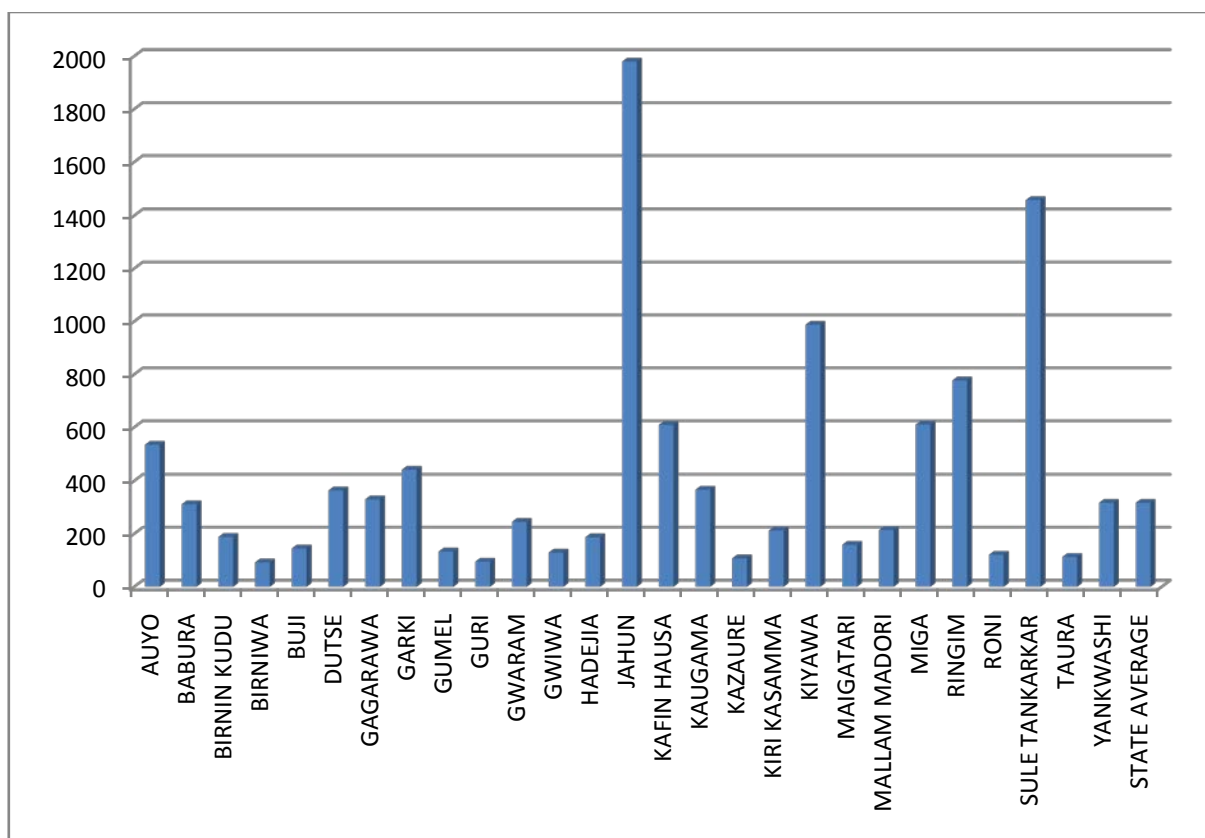


Table 5.9 Toilets in public JSS

LGEA	Schools with (%)					Total	Pupil Toilet Ratio
	No toilet	One toilet	Two toilet	Three toilets	Four or more		
AUYO	88	0	0	0	13	100	137
BABURA	50	0	10	0	40	100	114
BIRNIN KUDU	71	0	0	0	29	100	251
BIRNIWA	91	0	0	0	9	100	33
BUJI	40	0	40	0	20	100	127
DUTSE	63	0	0	0	37	100	93
GAGARAWA	88	0	13	0	0	100	980
GARKI	69	0	0	15	15	100	99
GUMEL	43	0	0	0	57	100	43
GURI	58	17	0	8	17	100	54
GWARAM	50	0	5	9	36	100	52
GWIWA	100	0	0	0	0	100	0
HADEJIA	25	0	0	13	63	100	168
JAHUN	88	0	6	0	6	100	327
KAFIN HAUSA	88	0	0	6	6	100	97
KAUGAMA	64	0	0	7	29	100	101
KAZAURE	50	0	25	0	25	100	165
KIRI KASAMMA	70	0	0	0	30	100	88
KIYAWA	73	0	0	0	27	100	230
MAIGATARI	67	0	0	0	33	100	62
MALLAM MADORI	30	0	30	0	40	100	110
MIGA	50	13	0	25	13	100	130
RINGIM	67	0	0	0	33	100	39
RONI	70	2	6	2	20	100	95
SULE TANKARKAR	67	0	7	0	27	100	41
TAURA	75	0	0	0	25	100	184
YANKWASHI	91	0	0	0	9	100	178
JIGAWA STATE	67	1	4	3	25	100	87

Table 5.10 Toilets in public SSS

LGEA	Schools with (%)					Total	Pupil Toilet Ratio
	No toilet	One toilet	Two toilet	Three toilets	Four or more		
AUYO	20	1	8	1	70	100	35
BABURA	0	0	0	0	100	100	45
BIRNIN KUDU	20	0	0	0	80	100	31
BIRNIWA	25	0	0	0	75	100	9
BUJI	0	0	33	0	67	100	32
DUTSE	75	0	0	0	25	100	128
GAGARAWA	0	0	0	100	0	100	129
GARKI	0	0	0	0	100	100	50
GUMEL	0	0	0	0	100	100	53
GURI	0	0	100	0	0	100	197
GWARAM	22	0	22	0	56	100	33
GWIWA	0	0	0	0	100	100	26
HADEJIA	0	0	0	0	100	100	111
JAHUN	0	0	0	0	100	100	15
KAFIN HAUSA	43	0	0	0	57	100	12
KAUGAMA	20	0	0	0	80	100	29
KAZAURE	0	0	0	0	100	100	31
KIRI KASAMMA	0	0	0	0	100	100	7
KIYAWA	50	0	0	0	50	100	96
MAIGATARI	0	0	0	0	100	100	122
MALLAM MADORI	25	25	0	25	25	100	13
MIGA	100	0	0	0	0	100	0
RINGIM	14	0	0	0	86	100	26
RONI	0	0	0	0	100	100	23
SULE TANKARKAR	20	0	0	0	80	100	24
TAURA	13	0	0	0	88	100	29
YANKWASHI	0	0	0	0	100	100	20
JIGAWA STATE	22	1	4	2	71	100	30

Annex A: Repetition rate, all levels

Table A.1

	Total	Male	Female
PRY1	1.8	2.0	1.6
PRY2	1.8	1.7	1.9
PRY3	1.6	1.4	1.8
PRY4	1.5	1.3	1.8
PRY5	1.6	1.7	1.6
PRY6	1.0	1.0	0.9
JSS1	1.8	2.2	1.0
JSS2	2.0	2.2	1.4
JSS3	0.6	0.6	0.7
SSS1	3.6	4.4	0.9