

PREFACE

In its concerted effort to improve the delivery of quality education, the Ministry of Education has completed another round of the Annual School Census (ASC) of 2013/2014. The ASC Report is a result of data collected, collated, inputted, cleaned and analysed based on a hierarchical ranking order from schools, Local Government Education Authorities (LGEAs), Zonal Education Offices (ZEOs), to Education Management Information System (EMIS) unit of the Ministry of Education.

The intent of the whole ASC exercise is to provide an accurate, timely and reliable data that will translate into guide to policy makers to ensure efficient and effective planning, decision making and monitoring the performance of the education sector.

Information provided herewith will be incorporated by stakeholders whilst planning the Medium Term Sector Strategy (MTSS) 2015-2017 Process and Annual Education Sector Performance Review (AESPR).

The approach used for data collection, collation, storage and retrieval is part of the reform strategies adopted by the state Ministry of Education to prepare for short, medium and long term planning. The ASC result mirrors certain education Key Performance Indicators (KPIs) such as student population, number of teachers, pupil classroom ratio, and school facilities etcetera.

Let me at this juncture to on behalf of the Kano State Government and particularly, the State Ministry of Education express our appreciation and gratitude to our development partner, the Education Sector Support Programme in Nigeria (ESSPIN) for all the important technical and financial support being given to the education sector in our noble state.

Finally, I wish to congratulate the Department of Planning Research and Statistics in the State Ministry of Education, the education parastatals and other Education officials at all levels who have contributed in one way or the other towards the conduct of the 2011-2012 ASC exercise and the preparation of this Report.

Honourable Commissioner

Table of contents

Preface	i
List of Tables	iv
List of Figures	vi
Definitions	vii
Abbreviations	viii
Background	1
Summary Of Indicator Trend 2009/10 – 2013/14	3
Profile of Kano LGAs based on Key School Indicators for 20013/2014 ASC	5
ASC Information and Coverage	7
Students	10
Teachers	39
Facilities	53
Annex A: Key Indicators (Efficiency Indicators)	69
Annex B: Population projections	72

List of tables

2.1	Number of schools	7
2.2	Number of private schools by level	7
2.3	Number of public schools, enrolment and teachers	8
2.4	Number of public schools with special curriculum	8
2.5	Selective characteristics of public schools (Percentages)	9
2.6	Selective characteristics of public schools (Absolute Numbers)	9
3.1	Enrolment in public pre-primary education by level, gender and LGA	10
3.2	Enrolment in private pre-primary education by level, gender and LGA	11
3.3	Public and private pre-primary school enrolment by gender and LGA	12
3.4a	Enrolment in public primary schools by level, gender and LGA (1-3)	13
3.4b	Enrolment in public primary schools by level, gender and LGA (4-6)	14
3.5a	Enrolment in private primary schools by level, gender and LGA (1-3)	15
3.5b	Enrolment in private primary schools by level, gender and LGA (4-6)	16
3.6	Public and private primary school enrolment by gender and LGA	17
3.7	Total Public and Private primary school enrolment by gender and LGA	18
3.8	Enrolment in public junior secondary schools by level, gender and LGA	20
3.9	Enrolment in private junior secondary schools by level, gender and LGA	21
3.10	Public and private junior secondary school enrolment by gender and LGA	22
3.11	Public and Private Junior secondary school enrolment by gender and LGA	23
3.12a	Enrolment in public JS Reart secondary schools by level, gender and LGA	24
3.12b	Enrolment in public Reart SS secondary schools by level, gender and LGA	25
3.13	Public Reart Secondary Schools enrolment by gender and LGA	27
3.14	Reart (JS) Secondary School enrolment by gender,age and LGA	28
3.15	Public Reart (SS) Secondary School enrolment by gender,age and LGA	29
3.16	Public Senior Secondary School enrolment by gender and LGA	30
3.17	Enrolment in private senior secondary schools by level,gender and LGA	31
3.18	Public and Private senior secondary school enrolment by gender and LGA	32
3.19	Public and Private Senior Secondary school enrolment by gender and LGA	33
3.20	Enrolment of special needs children in public primary schools	34
3.21	Enrolment of special needs children in public secondary schools	34
3.22	Repeaters in public primary schools by LGA,Class and gender	36
3.23	Repeaters in public secondary schools by LGA, Class and Gender	37
3.24	Repeaters in public Reart Secondary School by LGA, Class and Gender	38
4.1	Number of Pre-primary school teachers by gender and LGA	39

4.2	Number of primary school teachers by gender and LGA	40
4.3	Pupil – Teacher ratio by LGA, public primary schools	41
4.4	Number of Public Junior Secondary School Teachers by Gender and LGA	42
4.5	Public Pupil – Teacher ratio by type and LGA, Junior secondary schools	43
4.6	Number of public rearticulated secondary school teachers by gender and LGA	44
4.7	Public pupil ratio by type and LGA, Reart Secondary Schools	45
4.8	Number of public senior secondary school teachers by gender and LGA	46
4.9	Pupil-teacher ratio by type and LGA, public senior secondary schools	47
4.10	Percentage of long term absent teachers (Public Only)	48
4.11	Percentage of teachers by highest level of education attained (public only)	49
4.12	Percentage of teachers by sources of salary (public Only)	52
4.13	Number of private school teachers by gender and LGA (All Levels)	52
4.14	Pupil - teacher ratio in private schools by LGA (All Levels)	52
5.1	Number of lassrooms by school type and LGA	53
5.2	Pupil – classroom ratio by type and LGA	54
5.3	Selective characteristic of public Primary school facilities	57
5.4	Selective Characteristics of public Junior Secondary School Facilities	58
5.5	Selective characteristics of Rearticulated Secondary School facilities	59
5.6	Selective characteristics of public senior secondary school facilities	60
5.7	Main Source of safe water in public primary schools, percentage of schools	61
5.8	Main source of safe water in public JSS, percentage of schools	62
5.9	Main source of safe water in public rearticulated SS, percentage of schools	63
5.10	Main source of safe water in public SS schools, percentage of schools	64
5.11	Toilet in public primary schools	65
5.12	Toilet in public Junior secondary schools	66
5.13	Toilet in public Rearticulated Secondary Schools	67
5.14	Toilet in public senior secondary schools	68
A1	Transition Rate from Primary 6 to JSS 1	69
A2	Promotion rate by class and gender	70
A3	Repetition rate by class and gender	70
A4	Drop rate by class and gender	70
A5	Survival Rate by class and gender	71
B1	Population projections by LGA, 2013	72
B2	Population Projections	73

List of Figures

1	Public Pre-Primary & Primary Schools Enrolment by Gender and Level	19
2	Rearticulated Schools Enrolment by Gender and Level	26
3	Enrolment of Special Needs	35
4	Public Schools Teachers by Gender and Qualification	50
5	Ranked Pupil /Qualified Teacher Ratio (Primary) by LGA	51
6	Pupil/Classroom ratio by Level and by LGA (Primary)	55
7	Percentage Classroom functions by Level and use by LGA (Primary)	56

Definitions

Dropout Rate by Grade

Dropout rate is the percentage of pupils from a cohort enrolled in a given grade at a given school year that is no longer enrolled in the following school year. It measures the phenomenon of pupils from a cohort leaving school without completion, and its effect on the internal efficiency of educational systems. In addition, it is one of the key indicators for analysing and projecting pupil flows from grade to grade within the educational cycle.

Gross Enrolment Rate (GER)

GER is the total enrolment in primary education, regardless of age, expressed as a percentage of the eligible official school-age population (6-11 years in Nigeria). It shows the general level of participation in primary education. It indicates the capacity of the education system to enrol students of that age group. It can also be a complementary indicator to net enrolment rate by indicating the extent of over-aged and under-aged enrolment.

Gross Intake Rate (GIR)

GIR is the total number of new entrants in the first grade of primary education, regardless of age, expressed as a percentage of the population at the official primary school-entrance age (6 years in Nigeria). It indicates the general level of access to primary education. It also indicates the capacity of the education system to provide access to grade 1 for the official school-entrance age population.

Net Enrolment Rate (NER)

NER is the enrolment of the official age group for primary education (6-11 years in Nigeria) expressed as a percentage of the corresponding population. It shows the extent of coverage in a given level of education of children and youths belonging to the official age group corresponding to the given level of education.

Pupil-Teacher Ratio (PTR)

PTR is the average number of pupils (students) per teacher at a specific level of education in a given school year. It measures the level of human resources input in terms of the number of teachers in relation to the size of the pupil population. The results can be compared with established national norms on the number of pupils per teacher.

Repetition rate by grade:

Repetition rate is the percentage of pupils from a cohort enrolled in a given grade at a given school year who study in the same grade in the following school year. It measures the rate at which pupils from a cohort repeat a grade, and its effect on the internal efficiency of educational systems. In addition, it is one of the key indicators for analysing and projecting pupil flows from grade to grade within the educational cycle.

Source: UNESCO Institute of Statistics, Education Indicators, Technical Guidelines, November 2009

Abbreviations

ASC	Annual School Census
DFID	UK Department For International Development
EMIS	Education Management Information System
ERC	Education Resource Centre
ESP	Education Sector Plan
ESSPIN	Education Sector Support Programme In Nigeria
GER	Gross Enrolment Rate
JSS	Junior Secondary Schools
LGA	Local Government Area
LGEA	Local Government Education Authority
MTSS	Medium Term Sector Strategies
NCE	National Council on Education
NER	Net Enrolment Rate
PF	Parents Forum
PRS	Planning, Research and Statistics
PTA	Parent-Teacher Association
SBMC	School-Based Management Committee
SDP	School Development Plan
SESP	State Education Sector Project
SOME	State Ministry of Education
SSS	Senior Secondary School
SUBEB	State Universal Basic Education Board

1. Background

The *Nigeria Educational Management Information System (NEMIS) Policy*, which was approved by the 54th National Council on Education (NCE) meeting in Katsina in December 2007, envisages the decentralisation of the system in 2009: “different states are now required to set up, staff and furnish Education Management Information Systems (EMIS) for their respective states”. The *Policy* document determines some coordination principles (in terms of organisations, operations and the transition period). These are further explained in the *Implementation Guidelines for the NEMIS Policy* that were disseminated in August 2009.

According to the *Policy*, the National EMIS Committee is responsible, among others for:

- Ensuring that EMIS is operational and understood uniformly around the country.
- Facilitating the sharing of technical information and practices regularly to all institutions that provide primary data for the management of education at any level.
- Developing and monitoring compliance with EMIS policies and updating practice.
- Clarifying information needs at all levels of the education system and encouraging the flow of data and the training of participants.
- Evaluating the performance of the system and recommending actions.

The National EMIS Committee convened in August of 2009 approved the ASC Operational Manual, which is based on a census cycle that runs from August to July. The Operational Manual includes guidance for every ASC phase and a timeline. Based on the *Policy* and the *Guidelines*, the purpose of the *Operational Manual* is to:

- Guide States on how to plan the ASC in order to achieve the ultimate objective, which is the availability of accurate, timely and reliable data.
- Facilitate the exchange of information between States on what works and what does not work.
- Explain how key aspects of the process will be coordinated and standardised between the States and the Federal level (questionnaires, technology, timeline, reporting).

The National EMIS Committee also approved a simplified ASC questionnaire (8 pages long for the public sector) and an even shorter for private schools (4 pages long). Mid-November was selected as the period for data collection.

The Kano State Full EMIS Committee convened for its meeting in October of 2012. The Full EMIS Committee approved the ASC budget, the training schedule and the methodology of data collection, which included the use of Local School Supervisors (LSS) and Secondary School Inspectors as enumerators, in order to improve the quality of the information. Training was also provided to data enterers and data analysts. The analysis of the ASC data for this Report was completed in June, 2014.

The Kano State Ministry of Education (SMOE) along with its affiliated parastatals namely, the State Universal Basic Education Board (SUBEB), Senior Secondary Schools Management Board (SSSMB), the Science and Technical Schools Board (STSB), with the support of UK-DFID/Education Sector Support program In Nigeria

Kano State School Census Report 2013/2014

(ESSPIN) carried out the Annual School Census (ASC) in the 2013/2014 academic session.

The purpose of the school census is to provide yearly data to effectively monitor the state of the education sector and facilitate the use of information for planning and budgeting decisions.

The Kano State Ministry of Education places high premium on the successful conduct of the ASC from beginning up to its end, because of the significance which accurate, timely and reliable data has in determining efficient planning, policy formulation and decision making. Hence, great emphasis was put in ensuring that the results of the ASC are reported in a timely way to the public.

SUMMARY OF INDICATOR TREND 2009/10 – 2013/14

INDICATORS	KANO				
	2009/10	2010/11	2011/12	2012/13	2013/14
Primary Schools	ASC	ASC	ASC	ASC	ASC
Gross Enrolment Rate (%)	107	112	115	123	139
Net Enrolment Rate (%)	96	101	93	108	117
GPI on Pupil Enrolment	0.9	0.9	0.9	0.9	0.96
Percentage of Qualified Teachers	37	42	74	47	45
Pupil/Teacher Ratio	42	44	47	49	48
Pupil/Qualified Teacher Ratio	114	105	63	105	108
GPI on Teachers	0.2	0.2	0.25	0.3	0.25
Pupil/Total Classroom Ratio	87	86	81	87	82
Junior Secondary Schools					
Gross Enrolment Rate (%)	40	40	40	41	43
Net Enrolment Rate (%)	33	28	16	30	32
GPI on Pupil Enrolment	0.6	0.7	0.9	0.9	0.68
Percentage of Qualified Teachers	79	80	85	79	79
Pupil/Teacher Ratio	33	34	31	27	26
Pupil/Qualified Teacher Ratio	42	42	37	34	32
GPI on Teachers	0.3	0.3	0.2	0.2	0.27
Pupil/Total Classroom Ratio	59	70	187	42	36
Senior Secondary Schools					
Gross Enrolment Rate (%)	29	32	34	34	32
Net Enrolment Rate (%)	24	22	19	24	21
GPI on Pupil Enrolment	0.6	0.6	0.8	0.9	0.52
Percentage of Qualified Teachers	82	80	85	72	80
Pupil/Teacher Ratio	31	41	24	23	41
Pupil/Qualified Teacher Ratio	39	51	28	31	51
GPI on Teachers	0.8	0.3	0.4	0.3	0.3
Pupil/Total Classroom Ratio	51	90	39	54	33

Profile of KANO LGAs based on Key School Indicators for 2013/2014 ASC

LGA	Popn. of 6-11 yr olds	Enrolment in primary schools	No. of public primary schools	No. of teachers in public primary schools	P/Clrm ratio in Pre-Primary and primary schools	% of public primary schools with no source of water	Pupils/Toilet ratio	% of schools with no health facility or first aid	% of public schools without good blackboard
AJINGI	36,702	31,924	115	662	99	63	249	56	40
ALBASU	40,097	33,047	115	855	83	50	100	45	43
BAGWAI	34,339	23,128	52	753	61	25	126	38	39
BEBEJI	39,825	41,186	114	764	90	66	241	53	57
BICHI	58,432	79,531	173	1,259	92	60	177	66	31
BUNKURE	36,036	47,473	137	838	100	42	86	57	53
DALA	88,307	123,648	156	2,024	84	13	295	19	18
DAMBATTA	43,853	40,320	125	1,315	96	67	224	81	42
DAWAKIN KUDU	47,528	78,761	176	1,258	134	61	261	69	45
DAWAKIN TOFA	52,269	41,945	82	944	79	59	139	28	47
DOGUWA	31,879	44,195	117	816	130	69	318	70	47
FAGGE	41,927	95,897	103	1,836	88	23	148	20	32
GABASAWA	44,505	38,570	110	1,193	79	47	121	45	50
GARKO	34,266	30,505	86	738	85	72	223	58	41
GARUN MALAN	24,565	32,323	88	707	80	54	143	60	45
GAYA	42,388	45,517	144	1,052	86	51	174	70	44
GEZAWA	59,479	74,342	160	1,419	112	52	402	43	50
GWALE	76,346	119,811	207	2,709	73	13	122	19	26
GWARZO	38,797	56,098	159	1,366	73	60	357	70	37
KABO	32,438	47,300	136	1,186	85	71	214	82	54
KANO MUNICIPAL	77,077	89,647	148	2,409	68	14	129	24	27

Kano State School Census Report 2013/2014

KARAYE	29,818	53,712	138	784	105	75	268	77	50
KIBIYA	28,833	22,562	81	639	60	62	118	74	35
KIRU	55,834	62,759	150	832	106	63	253	54	34
KUMBOTSO	62,413	132,077	203	2,220	107	25	182	29	25
KUNCHI	23,411	28,799	103	733	72	78	207	75	17
KURA	30,492	44,850	94	695	81	48	180	54	24
MADOBI	28,810	40,903	131	649	93	57	185	76	37
MAKODA	46,897	22,898	71	635	81	54	160	35	15
MINJIBIR	45,082	65,810	170	1,291	96	62	152	62	40
NASSARAWA	125,819	151,279	190	2,586	99	12	208	14	27
RANO	30,668	35,776	114	796	72	52	182	51	56
RIMIN GADO	22,097	37,301	93	863	88	63	320	28	30
ROGO	48,024	76,717	152	823	123	37	235	45	34
SHANONO	29,650	40,401	124	991	84	81	308	78	48
SUMAILA	53,489	34,760	93	676	81	30	147	62	51
TAKAI	42,752	42,909	110	737	83	62	141	73	38
TARAUNI	46,679	117,155	210	2,034	85	20	212	44	28
TOFA	20,609	33,627	89	720	80	46	172	45	40
TSANYAWA	33,250	45,160	116	830	97	59	262	76	46
TUDUN WADA	48,867	68,413	153	1,519	127	42	427	48	52
UNGOGO	77,949	128,823	201	2,025	117	50	257	42	42
WARAWA	27,157	36,050	120	920	93	56	94	78	32
WUDIL	39,051	55,594	123	1,146	88	52	157	42	31
TOTAL	1,978,702	2,593,503	5,732	51,247	91	49	187	52	37

2. ASC Information and Coverage

Table 2.1: Number of schools

Original school list	Public				All Private
	Pre Primary and Primary *	Junior Secondary	Reararticulated Schools	Senior Secondary	
1A. Responded	5,494	359	462	6	912
1B. Did not respond **	0	0	0	0	161
1. Total	5,494	359	462	6	1,073
Response rate, original school list %	100%	100%	100%	100%	85.0%
New schools					
2. Total	238	4	50	0	0
All schools					
1A+2. Responded	5,732	363	512	6	912
1B. Did not respond **	0	0	0	0	161
1A+1B+2. Total	5,732	363	512	6	1,073
Response rate, all schools (%)	100%	100%	100%	100%	85.0%

Notes: School Lists for Private particularly poor

* Includes pre-primary/primary' primary and pre-primary only schools

** A number of the non responding schools may no longer exist and be due to inaccurate school lists

Table 2.2: Number of private schools by level

	Number of schools		Number of schools
Schools with pre-primary classes	639	Of which: Pre- Primary only	0
Schools with primary classes	746	Of which: Primary only	317
Schools with junior secondary classes	462	Of which: Junior secondary only	63
Schools with senior secondary classes	300	Of which: Senior secondary only	12

Table 2.3: Number of public schools, enrolment and teachers

Level	Number of schools	Number of pupils			Number of teachers		
		Male	Female	Total	Male	Female	Total
All Pre-primary and Primary	5,732	1,396,997	1,346,650	2,743,647	40,916	10,337	51,253
Junior secondary only	363	46,066	30,633	76,699	2,764	566	3,333
Senior School only	6	1,946	1,239	3,185	92	33	126
Rearticulated** (JSS)	512	127,656	88,318	215,974	9,909	2,860	12,797
Rearticulated** (SSS)		130,722	67,327	198,049			
Total	6,613	1,703,387	1,534,167	3,237,554	53,681	13,796	67,509

** Schools with both junior and senior secondary schools

Teacher Numbers Calculated from Teachers Table

Table 2.4: Number of public schools with special curriculum

	Number of schools	Number of pupils			Number of teachers		
		Male	Female	Total	Male	Female	Total
Primary education							
Islamiyya Integrated	3,007	455,861	599,580	1,055,441	13,450	4,541	17,991
Nomadic	252	30,495	25,299	55,794	1,001	51	1,052
Junior secondary education							
Islamiyya Integrated	33	1,673	3,329	5,002	204	32	236
Vocational	0	0	0	0	0	0	0
Reart./Senior secondary education							
Islamiyya Integrated (Reart.)	49	10,810	13,917	24,727	635	79	714
Vocational	0	0	0	0	0	0	0
Science and Technical College	28	8,092	947	9,039	474	63	537

Table 2.5: Selective characteristics of public schools (Percentages)

Number of schools with:	Primary		Junior secondary		Senior secondary		Reart. Secondary	
	Urban %	Rural %	Urban %	Rural %	Urban %	Rural %	Urban %	Rural %
Double shifts	5	1	2	1	0	0	14	6
Shared facilities	6	9	20	48	17	0	8	18
School Development Plan	18	38	20	69	33	67	30	61
School-Based Management Committee	23	66	22	72	33	67	31	62
Parent-Teacher Association	27	69	23	74	33	67	31	64
Multi-grade teaching	4	19	8	18	0	17	8	15

Table 2.6: Selective characteristics of public schools (Absolute Numbers)

Number of schools with:	Primary		Junior secondary		Senior secondary		Reart. Secondary	
	Urban	Rural	Urban	Rural	Urban	Rural	Urban	Rural
Double shifts	306	81	8	2	0	0	73	30
Shared facilities	336	535	73	174	1	0	43	93
School Development Plan	1,044	2,154	72	249	2	4	156	310
School-Based Management Committee	1,320	3,785	80	261	2	4	159	318
Parent-Teacher Association	1,562	3,950	85	268	2	4	161	327
Multi-grade teaching	232	1,093	30	66	0	1	39	79

3. Students

Table 3.1 Enrolment in public pre-primary education by level, gender and LGA

LGA	Kindergarten			Nursery		
	Boys	Girls	Total	Boys	Girls	Total
AJINGI	1,219	1,187	2,406	883	797	1,680
ALBASU	1,939	1,963	3,895	530	402	932
BAGWAI	2,372	1,816	4,188	151	97	248
BEBEJI	1,545	1,306	2,851	1,021	1,011	2,032
BICHI	2,816	2,571	5,387	842	727	1,569
BUNKURE	962	630	1,592	3,487	3,406	6,848
DALA	462	409	871	3,733	3,909	7,642
DAMBATTA	1,753	1,593	3,346	1,939	1,847	3,786
DAWAKIN KUDU	228	193	421	3,863	3,789	7,652
DAWAKIN TOFA	3,727	3,185	6,912	33	27	60
DOGUWA	1,172	812	1,984	1,623	1,425	3,048
FAGGE	1,949	1,900	3,849	994	947	1,941
GABASAWA	2,653	2,478	5,104	27	24	51
GARKO	1,485	1,242	2,727	1,225	1,082	2,307
GARUN MALAN	1,303	1,233	2,536	2,479	1,934	4,413
GAYA	1,152	989	2,141	270	233	503
GEZAWA	1,109	388	1,497	7,963	5,954	13,917
GWALE	1,494	1,549	3,043	3,631	3,903	7,534
GWARZO	0	0	0	4,633	4,247	8,880
KABO	1,818	1,409	3,227	658	634	1,292
KANO MUNICIPAL	1,227	1,378	2,605	3,109	3,414	6,523
KARAYE	1,992	1,761	3,753	917	553	1,470
KIBIYA	45	35	80	777	608	1,385
KIRU	981	940	1,921	2,939	2,478	5,417
KUMBOTSO	2,280	2,466	4,746	2,548	2,439	4,987
KUNCHI	915	938	1,853	365	433	798
KURA	104	52	156	215	237	452
MADOBI	1,700	1,316	3,016	1,547	1,125	2,672
MAKODA	0	0	0	3,573	3,502	6,997
MINJIBIR	0	0	0	6,896	4,827	11,723
NASSARAWA	1,306	1,351	2,657	3,313	3,564	6,877
RANO	323	258	581	1,118	925	2,043
RIMIN GADO	1,203	1,237	2,440	358	309	667
ROGO	1,087	740	1,827	469	361	830
SHANONO	1,875	1,379	3,254	96	71	167
SUMAILA	358	359	717	1,024	711	1,735
TAKAI	2,813	2,460	5,273	7	2	9
TARAUNI	219	240	459	2,678	2,784	5,462
TOFA	413	425	838	1,341	1,243	2,584
TSANYAWA	1,194	986	2,180	306	228	534
TUDUN WADA	882	780	1,662	4,148	3,208	7,356
UNGOGO	5,456	5,776	11,232	697	679	1,376
WARAWA	472	503	975	1,440	1,076	2,516
WUDIL	348	340	688	3,350	3,413	6,763
TOTAL	58,351	52,573	110,890	83,216	74,585	157,678

Table 3.2 : Enrolment in private pre-primary education by level, gender and LGA

LGA	Kindergarten			Nursery		
	Boys	Girls	Total	Boys	Girls	Total
AJINGI	18	12	30	17	11	28
ALBASU	0	0	0	0	0	0
BAGWAI	0	0	0	0	0	0
BEBEJI	48	46	94	141	134	275
BICHI	73	85	158	420	284	704
BUNKURE	44	32	76	51	48	99
DALA	330	300	630	882	869	1,751
DAMBATTA	36	40	76	230	256	486
DAWAKIN KUDU	93	58	151	198	160	358
DAWAKIN TOFA	424	849	1,273	248	267	515
DOGUWA	112	60	172	263	191	454
FAGGE	2,717	695	3,412	1,589	1,579	3,168
GABASAWA	0	0	0	13	21	34
GARKO	0	0	0	28	31	59
GARUN MALAN	0	0	0	49	30	79
GAYA	0	0	0	0	0	0
GEZAWA	0	0	0	0	0	0
GWALE	792	741	1,533	2,889	2,847	5,736
GWARZO	45	21	66	206	160	366
KABO	20	16	36	35	36	71
KANO MUNICIPAL	552	518	1,070	2,176	2,226	4,402
KARAYE	0	0	0	29	15	44
KIBIYA	6	7	13	56	55	111
KIRU	52	32	84	127	98	225
KUMBOTSO	824	818	1,642	2,765	2,744	5,509
KUNCHI	0	0	0	0	0	0
KURA	31	22	53	152	126	278
MADOBI	0	0	0	44	38	82
MAKODA	0	0	0	0	0	0
MINJIBIR	43	36	79	145	125	270
NASSARAWA	1,141	1,025	2,166	3,411	3,126	6,537
RANO	71	47	118	34	21	55
RIMIN GADO	0	0	0	25	15	40
ROGO	0	0	0	55	67	122
SHANONO	13	9	22	21	16	37
SUMAILA	47	37	84	93	111	204
TAKAI	12	17	29	105	75	180
TARAUNI	763	779	1,542	2,773	2,720	5,493
TOFA	0	0	0	56	53	109
TSANYAWA	0	0	0	0	0	0
TUDUN WADA	0	0	0	0	0	0
UNGOGO	154	182	336	406	395	801
WARAWA	0	0	0	0	0	0
WUDIL	37	37	74	193	192	385
TOTAL	8,498	6,521	15,019	19,925	19,142	39,067

*Decrease in the number of private schools could be as a result of government's enforcement of private schools registration

Table 3.3: Public and private pre-primary school enrolment by gender and LGA

LGA	Public				Private				Total	
	Number of Schools	Pupils	Girls	% girls	Number of Schools	Pupils	Girls	% girls	Pupils	% girls
AJINGI	27	4,086	1,984	49	1	58	23	40	4,144	48
ALBASU	32	4,827	2,365	49	0	0	0	0	4,827	49
BAGWAI	22	4,436	1,913	43	0	0	0	0	4,436	43
BEBEJI	30	4,883	2,317	47	2	369	180	49	5,252	48
BICHI	29	6,956	3,298	47	6	862	369	43	7,818	47
BUNKURE	37	8,440	4,036	48	2	175	80	46	8,615	48
DALA	60	8,513	4,318	51	31	2,381	1,169	49	10,894	50
DAMBATTA	108	7,132	3,440	48	4	562	296	53	7,694	49
DAWAKIN KUDU	54	8,073	3,982	49	6	509	218	43	8,582	49
DAWAKIN TOFA	61	6,972	3,212	46	8	1,788	1,116	62	8,760	49
DOGUWA	11	5,032	2,237	44	5	626	251	40	5,658	44
FAGGE	35	5,790	2,847	49	73	6,580	2,274	35	12,370	41
GABASAWA	48	5,155	2,502	49	1	34	21	62	5,189	49
GARKO	17	5,034	2,324	46	1	59	31	53	5,093	46
GARUN MALAN	53	6,949	3,167	46	1	79	30	38	7,028	45
GAYA	26	2,644	1,222	46	0	0	0	0	2,644	46
GEZAWA	89	15,414	6,342	41	0	0	0	0	15,414	41
GWALE	60	10,577	5,452	52	65	7,269	3,588	49	17,846	51
GWARZO	59	8,880	4,247	48	3	432	181	42	9,312	48
KABO	4	4,519	2,043	45	1	107	52	49	4,626	45
KANO MUNICIPAL	81	9,128	4,792	52	39	5,472	2,744	50	14,600	52
KARAYE	33	5,223	2,314	44	1	44	15	34	5,267	44
KIBIYA	15	1,465	643	44	2	124	62	50	1,589	44
KIRU	43	7,338	3,418	47	3	309	130	42	7,647	46
KUMBOTSO	80	9,733	4,905	50	101	7,151	3,562	50	16,884	50
KUNCHI	3	2,651	1,371	52	0	0	0	0	2,651	52
KURA	9	608	289	48	5	331	148	45	939	47
MADObI	28	5,688	2,441	43	3	82	38	46	5,770	43
MAKODA	65	6,997	3,502	50	0	0	0	0	6,997	50
MINJIBIR	96	11,723	4,827	41	8	349	161	46	12,072	41
NASSARAWA	90	9,534	4,915	52	141	8,703	4,151	48	18,237	50
RANO	14	2,624	1,183	45	1	173	68	39	2,797	45
RIMIN GADO	27	3,107	1,546	50	1	40	15	38	3,147	50
ROGO	3	2,657	1,101	41	2	122	67	55	2,779	42
SHANONO	34	3,421	1,450	42	1	59	25	42	3,480	42
SUMAILA	3	2,452	1,070	44	2	288	148	51	2,740	44
TAKAI	22	5,282	2,462	47	2	209	92	44	5,491	47
TARAUNI	36	5,921	3,024	51	91	7,035	3,499	50	12,956	50
TOFA	18	3,422	1,668	49	1	109	53	49	3,531	49
TSANYAWA	8	2,714	1,214	45	0	0	0	0	2,714	45
TUDUN WADA	61	9,018	3,988	44	0	0	0	0	9,018	44
UNGOGO	80	12,608	6,455	51	20	1,137	577	51	13,745	51
WARAWA	31	3,491	1,579	45	0	0	0	0	3,491	45
WUDIL	23	7,451	3,753	50	5	459	229	50	7,910	50
TOTAL	1,765	268,568	127,158	47	639	54,086	25,663	47	322,654	47

Table 3.4a: Enrolment in public primary schools by level, gender and LGA (Class 1-3)

LGA	Class 1			Class 2			Class 3		
	Boys	Girls	Total	Boys	Girls	Total	Boys	Girls	Total
AJINGI	3,500	3,369	6,869	3,608	3,266	6,874	3,117	3,017	6,134
ALBASU	3,551	3,582	7,133	3,360	3,313	6,673	3,184	2,796	5,980
BAGWAI	2,640	1,903	4,543	2,389	1,730	4,119	2,380	1,704	4,084
BEBEJI	4,586	4,153	8,739	4,461	4,112	8,573	3,877	3,734	7,611
BICHI	9,400	9,883	19,283	8,608	8,760	17,368	7,460	7,532	14,992
BUNKURE	5,862	5,645	11,507	5,384	4,983	10,367	4,680	4,279	8,959
DALA	10,865	11,662	22,527	10,623	11,067	21,690	10,130	10,683	20,813
DAMBATTA	4,125	3,723	7,848	4,235	3,726	7,961	3,882	3,384	7,266
DAWAKIN KUDU	8,811	9,380	18,191	7,805	8,374	16,179	7,114	8,391	15,505
DAWAKIN TOFA	4,458	3,440	7,898	4,610	3,775	8,385	4,228	3,408	7,636
DOGUWA	6,132	5,232	11,364	5,145	4,301	9,446	4,463	3,763	8,226
FAGGE	9,631	9,544	19,175	8,707	8,716	17,423	7,761	7,747	15,508
GABASAWA	3,776	3,675	7,451	3,805	3,641	7,446	3,743	3,632	7,375
GARKO	3,354	2,651	6,005	3,135	2,689	5,824	2,989	2,483	5,472
GARUN MALAN	3,688	3,944	7,632	3,155	3,753	6,908	2,854	3,296	6,150
GAYA	4,915	5,113	10,028	4,771	4,744	9,515	4,677	4,331	9,008
GEZAWA	7,497	12,007	19,504	7,007	8,050	15,057	6,368	7,518	13,886
GWALE	10,410	10,929	21,339	9,656	9,903	19,559	10,057	9,556	19,613
GWARZO	6,395	5,976	12,371	6,003	5,285	11,288	5,162	4,809	9,971
KABO	6,004	5,522	11,526	5,475	5,183	10,658	4,699	4,477	9,176
KANO MUNICIPAL	6,899	6,886	13,785	6,744	6,604	13,348	6,619	6,536	13,155
KARAYE	6,491	6,066	12,557	5,947	5,781	11,728	5,367	4,948	10,315
KIBIYA	2,312	2,138	4,450	2,335	2,273	4,608	2,149	1,819	3,968
KIRU	6,956	6,415	13,371	6,122	5,830	11,952	6,063	5,463	11,526
KUMBOTSO	13,225	13,796	27,021	12,334	12,918	25,252	10,484	10,634	21,118
KUNCHI	3,344	3,405	6,749	3,322	3,213	6,535	2,772	2,829	5,601
KURA	4,260	4,353	8,613	4,412	4,517	8,929	3,785	3,943	7,728
MADObI	5,142	3,773	8,915	4,479	3,798	8,277	3,534	3,431	6,965
MAKODA	2,375	2,233	4,608	2,275	2,149	4,424	2,135	2,137	4,272
MINJIBIR	7,614	8,348	15,962	7,040	7,316	14,356	5,682	6,329	12,011
NASSARAWA	15,368	13,528	28,896	11,756	12,576	24,332	11,147	12,206	23,353
RANO	4,091	4,611	8,702	3,821	4,127	7,948	2,986	3,137	6,123
RIMIN GADO	3,999	3,806	7,805	3,267	3,583	6,850	6,852	3,222	10,074
ROGO	9,167	8,207	17,374	8,434	7,972	16,406	7,129	6,967	14,096
SHANONO	5,745	5,190	10,935	4,754	4,562	9,316	4,025	3,817	7,842
SUMAILA	4,169	3,418	7,587	3,945	3,192	7,137	3,343	2,565	5,908
TAKAI	4,406	3,758	8,164	4,212	3,721	7,933	3,809	3,020	6,829
TARAUNI	8,152	8,554	16,706	8,301	8,923	17,224	7,785	8,233	16,018
TOFA	4,248	4,424	8,672	3,519	3,536	7,055	2,925	2,818	5,743
TSANYAWA	4,710	4,755	9,465	4,452	4,697	9,149	3,980	4,211	8,191
TUDUN WADA	8,528	7,001	15,529	8,447	6,748	15,195	6,938	5,751	12,689
UNGOGO	13,345	13,734	27,079	12,795	12,799	25,594	11,300	11,745	23,045
WARAWA	3,923	4,003	7,926	3,677	3,615	7,292	3,730	3,105	6,835
WUDIL	5,778	6,369	12,147	5,182	5,543	10,725	5,069	5,593	10,662
Total	273,847	270,104	543,951	253,514	249,364	502,878	232,433	224,999	457,432

Table 3.4b: Enrolment in public primary schools by level, gender and LGA (Class 4-6)

LGA	Class 4			Class 5			Class 6		
	Boys	Girls	Total	Boys	Girls	Total	Boys	Girls	Total
AJINGI	2,508	2,270	4,778	2,184	1,710	3,894	1,862	1,362	3,224
ALBASU	2,394	2,462	4,856	2,273	2,186	4,459	2,026	1,920	3,946
BAGWAI	2,123	1,566	3,689	2,167	1,485	3,652	1,906	1,135	3,041
BEBEJI	3,257	2,821	6,078	2,715	2,476	5,191	2,292	2,184	4,476
BICHI	5,609	5,574	11,183	4,737	4,102	8,839	3,718	3,158	6,876
BUNKURE	3,621	3,277	6,898	2,897	2,409	5,306	2,318	1,788	4,106
DALA	9,889	10,331	20,220	8,397	9,356	17,753	7,605	8,603	16,208
DAMBATTA	3,422	3,026	6,448	2,880	2,580	5,460	2,473	1,986	4,459
DAWAKIN KUDU	5,640	6,541	12,181	4,344	4,795	9,139	3,405	3,560	6,965
DAWAKIN TOFA	3,291	2,620	5,911	2,817	2,123	4,940	2,727	2,005	4,732
DOGUWA	3,472	2,734	6,206	2,569	2,143	4,712	2,161	1,509	3,670
FAGGE	6,615	6,795	13,410	5,774	5,399	11,173	5,684	5,525	11,209
GABASAWA	2,947	2,872	5,819	2,740	2,548	5,288	2,778	2,385	5,163
GARKO	2,338	2,052	4,390	2,400	1,980	4,380	2,405	1,941	4,346
GARUN MALAN	2,425	2,560	4,985	1,688	1,916	3,604	1,375	1,512	2,887
GAYA	3,505	3,685	7,190	3,128	2,545	5,673	2,276	1,827	4,103
GEZAWA	4,953	5,412	10,365	5,335	3,937	9,272	3,349	2,909	6,258
GWALE	7,968	9,346	17,314	6,837	7,431	14,268	5,742	6,620	12,362
GWARZO	4,287	4,000	8,287	4,121	3,326	7,447	3,145	2,871	6,016
KABO	3,470	3,052	6,522	2,697	2,554	5,251	2,155	1,801	3,956
KANO MUNICIPAL	6,245	6,404	12,649	6,169	6,320	12,489	5,271	5,795	11,066
KARAYE	4,208	3,938	8,146	3,151	2,792	5,943	2,490	2,206	4,696
KIBIYA	1,891	1,627	3,518	1,585	1,420	3,005	1,386	1,128	2,514
KIRU	5,178	4,901	10,079	4,402	4,272	8,674	3,532	3,152	6,684
KUMBOTSO	9,208	9,581	18,789	7,273	7,375	14,648	6,268	6,517	12,785
KUNCHI	2,066	2,069	4,135	1,705	1,403	3,108	1,500	1,171	2,671
KURA	3,287	3,618	6,905	3,103	3,184	6,287	2,580	2,883	5,463
MADOBI	3,153	3,091	6,244	3,641	2,462	6,103	2,247	2,008	4,255
MAKODA	1,739	2,293	4,032	1,696	1,640	3,336	1,244	982	2,226
MINJIBIR	4,644	4,660	9,304	3,708	3,593	7,301	3,063	2,727	5,790
NASSARAWA	10,281	10,987	21,268	9,423	10,242	19,665	8,127	8,812	16,939
RANO	2,482	2,365	4,847	2,238	2,014	4,252	1,953	1,776	3,729
RIMIN GADO	2,364	2,624	4,988	2,053	2,033	4,086	1,709	1,701	3,410
ROGO	5,761	5,647	11,408	4,729	4,524	9,253	3,846	3,719	7,565
SHANONO	2,804	2,325	5,129	2,376	1,688	4,064	1,974	1,114	3,088
SUMAILA	2,833	2,221	5,054	2,884	2,028	4,912	2,217	1,655	3,872
TAKAI	3,568	3,696	7,264	3,559	2,709	6,268	3,484	2,637	6,121
TARAUNI	6,979	7,414	14,393	6,013	6,279	12,292	3,818	4,149	7,967
TOFA	2,322	2,434	4,756	1,928	2,064	3,992	1,518	1,597	3,115
TSANYAWA	4,585	3,142	7,727	3,076	3,514	6,590	2,183	1,855	4,038
TUDUN WADA	5,538	4,668	10,206	4,882	3,538	8,420	3,868	2,273	6,141
UNGOGO	9,781	10,246	20,027	8,254	8,525	16,779	7,202	7,097	14,299
WARAWA	2,607	2,665	5,272	2,351	2,382	4,733	1,941	2,051	3,992
WUDIL	4,057	4,082	8,139	3,560	3,544	7,104	3,039	3,179	6,218
Total	191,315	189,694	381,009	166,459	156,546	323,005	137,862	128,785	266,647

Table 3.5a: Enrolment in private primary schools by level, gender and LGA (1-3)

LGA	Class 1			Class 2			Class 3		
	Boys	Girls	Total	Boys	Girls	Total	Boys	Girls	Total
AJINGI	16	24	40	18	19	40	13	14	27
ALBASU	0	0	0	0	0	0	0	0	0
BAGWAI	0	0	0	0	0	0	0	0	0
BEBEJI	51	46	97	52	43	97	53	42	95
BICHI	126	128	254	123	95	254	117	97	214
BUNKURE	90	66	156	47	38	156	4	5	9
DALA	487	661	1,148	466	525	1,148	476	434	910
DAMBATTA	93	92	185	84	100	185	95	78	173
DAWAKIN KUDU	82	75	157	114	92	157	74	57	131
DAWAKIN TOFA	324	440	764	316	356	764	261	187	448
DOGUWA	104	73	177	82	69	177	79	62	141
FAGGE	845	884	1,729	874	884	1,729	729	812	1,541
GABASAWA	6	8	14	7	9	14	0	0	0
GARKO	15	6	21	11	7	21	14	5	19
GARUN MALAN	16	13	29	19	15	29	13	9	22
GAYA	0	0	0	0	0	0	0	0	0
GEZAWA	0	0	0	0	0	0	0	0	0
GWALE	1,386	1,541	2,927	1,637	1,552	2,927	1,616	1,567	3,183
GWARZO	111	94	205	105	67	205	69	54	123
KABO	18	22	40	17	16	40	20	23	43
KANO MUNICIPAL	1,282	1,510	2,792	1,246	1,262	2,792	1,223	1,245	2,468
KARAYE	29	20	49	37	27	49	42	19	61
KIBIYA	47	21	68	73	25	68	56	40	96
KIRU	65	45	110	36	34	110	47	33	80
KUMBOTSO	1,373	1,383	2,756	1,365	1,374	2,756	1,330	1,308	2,638
KUNCHI	0	0	0	0	0	0	0	0	0
KURA	118	104	222	115	89	222	81	87	168
MADOBI	28	27	55	25	19	55	9	8	17
MAKODA	0	0	0	0	0	0	0	0	0
MINJIBIR	173	160	333	98	98	333	69	80	149
NASSARAWA	1,784	1,815	3,599	1,740	1,750	3,599	1,765	1,652	3,417
RANO	23	20	43	25	15	43	14	16	30
RIMIN GADO	6	6	12	15	6	12	7	7	14
ROGO	67	59	126	37	39	126	54	61	115
SHANONO	3	4	7	3	2	7	2	3	5
SUMAILA	40	47	87	22	26	87	23	28	51
TAKAI	66	38	104	52	43	104	24	35	59
TARAUNI	3,791	3,946	7,737	3,065	3,332	7,737	2,630	2,992	5,622
TOFA	32	31	63	29	28	63	28	24	52
TSANYAWA	0	0	0	0	0	0	0	0	0
TUDUN WADA	27	43	70	23	24	70	15	26	41
UNGOGO	245	201	446	228	232	446	194	178	372
WARAWA	0	0	0	0	0	0	0	0	0
WUDIL	73	67	140	62	62	140	78	47	125
Total	13,042	13,720	26,762	12,268	12,374	26,762	11,324	11,335	22,659

Table 3.5b: Enrolment in private primary schools by level, gender and LGA (4-6)

LGA	Class 4			Class 5			Class 6		
	Boys	Girls	Total	Boys	Girls	Total	Boys	Girls	Total
AJINGI	9	12	21	8	5	13	8	2	10
ALBASU	0	0	0	0	0	0	0	0	0
BAGWAI	0	0	0	0	0	0	0	0	0
BEBEJI	36	43	79	38	40	78	43	29	72
BICHI	95	76	171	54	34	88	5	4	9
BUNKURE	2	4	6	3	0	3	0	0	0
DALA	303	336	639	238	229	467	63	62	125
DAMBATTA	93	78	171	56	57	113	26	25	51
DAWAKIN KUDU	49	39	88	41	27	68	0	0	0
DAWAKIN TOFA	100	199	299	23	61	84	34	50	84
DOGUWA	25	24	49	18	9	27	0	0	0
FAGGE	711	701	1,412	578	572	1,150	207	231	438
GABASAWA	0	0	0	0	0	0	0	0	0
GARKO	11	4	15	10	2	12	0	0	0
GARUN MALAN	13	17	30	20	9	29	12	6	18
GAYA	0	0	0	0	0	0	0	0	0
GEZAWA	0	0	0	0	0	0	0	0	0
GWALE	1,481	1,433	2,914	1,144	994	2,138	637	630	1,267
GWARZO	41	41	82	36	28	64	16	23	39
KABO	17	25	42	15	8	23	15	8	23
KANO MUNICIPAL	1,163	1,223	2,386	888	863	1,751	449	517	966
KARAYE	39	28	67	32	19	51	36	14	50
KIBIYA	71	33	104	61	33	94	34	35	69
KIRU	37	20	57	35	31	66	36	14	50
KUMBOTSO	1,061	1,085	2,146	747	783	1,530	336	302	638
KUNCHI	0	0	0	0	0	0	0	0	0
KURA	69	44	113	71	47	118	43	39	82
MADOBI	8	9	17	0	0	0	0	0	0
MAKODA	0	0	0	0	0	0	0	0	0
MINJIBIR	75	60	135	63	61	124	2	10	12
NASSARAWA	1,613	1,465	3,078	1,224	1,077	2,301	439	393	832
RANO	18	25	43	11	5	16	0	0	0
RIMIN GADO	8	10	18	16	5	21	7	4	11
ROGO	48	60	108	45	38	83	30	27	57
SHANONO	4	0	4	4	0	4	0	0	0
SUMAILA	12	21	33	10	10	20	8	4	12
TAKAI	27	21	48	6	9	15	0	0	0
TARAUNI	2,290	2,650	4,940	1,836	2,115	3,951	1,147	1,421	2,568
TOFA	35	24	59	28	29	57	0	0	0
TSANYAWA	0	0	0	0	0	0	0	0	0
TUDUN WADA	10	13	23	9	9	18	10	1	11
UNGOGO	195	162	357	134	130	264	53	62	115
WARAWA	0	0	0	0	0	0	0	0	0
WUDIL	54	48	102	58	34	92	0	0	0
Total	9,823	10,033	19,856	7,560	7,373	14,933	3,696	3,913	7,609

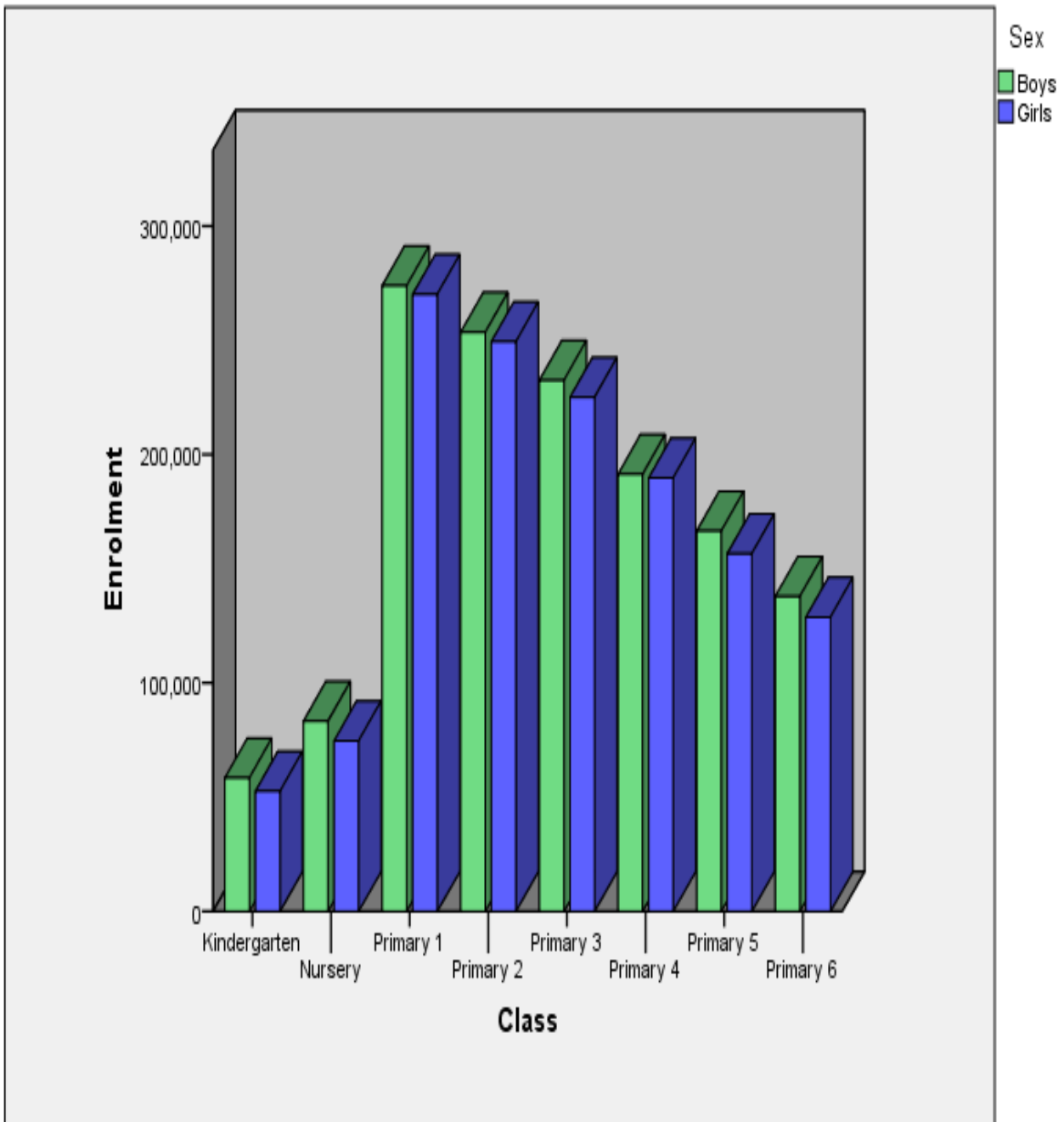
*Decrease in the number of private schools could be as a result of government's enforcement of private schools registration

Table 3.6: Public and private primary school enrolment by gender and LGA

LGA	Public				Private				Total	
	Number of Schools	Pupils	Girls	% girls	Number of Schools	Pupils	Girls	% girls	Pupils	% girls
AJINGI	115	31,773	14,994	47	1	151	76	50	31,924	47
ALBASU	115	33,047	16,259	49	0	0	0	0	33,047	49
BAGWAI	52	23,128	9,523	41	0	0	0	0	23,128	41
BEBEJI	114	40,668	19,480	48	3	518	243	47	41,186	48
BICHI	173	78,541	39,009	50	7	990	434	44	79,531	50
BUNKURE	137	47,143	22,381	47	3	330	113	34	47,473	47
DALA	156	119,211	61,702	52	34	4,437	2,247	51	123,648	52
DAMBATTA	125	39,442	18,425	47	5	878	430	49	40,320	47
DAWAKIN KUDU	176	78,160	41,041	53	5	601	290	48	78,761	52
DAWAKIN TOFA	82	39,502	17,371	44	8	2,443	1,293	53	41,945	44
DOGUWA	117	43,624	19,682	45	5	571	237	42	44,195	45
FAGGE	103	87,898	43,726	50	78	7,999	4,084	51	95,897	50
GABASAWA	110	38,542	18,753	49	1	28	17	61	38,570	49
GARKO	86	30,417	13,796	45	1	88	24	27	30,505	45
GARUN MALAN	88	32,166	16,981	53	1	157	69	44	32,323	53
GAYA	144	45,517	22,245	49	0	0	0	0	45,517	49
GEZAWA	160	74,342	39,833	54	0	0	0	0	74,342	54
GWALE	207	104,455	53,785	51	70	15,356	7,717	50	119,811	51
GWARZO	159	55,380	26,267	47	6	718	307	43	56,098	47
KABO	136	47,089	22,589	48	1	211	102	48	47,300	48
KANO MUNICIPAL	148	76,492	38,545	50	52	13,155	6,620	50	89,647	50
KARAYE	138	53,385	25,731	48	1	327	127	39	53,712	48
KIBIYA	81	22,063	10,405	47	3	499	187	37	22,562	47
KIRU	150	62,286	30,033	48	4	473	177	37	62,759	48
KUMBOTSO	203	119,613	60,821	51	108	12,464	6,235	50	132,077	51
KUNCHI	103	28,799	14,090	49	0	0	0	0	28,799	49
KURA	94	43,925	22,498	51	5	925	410	44	44,850	51
MADObI	131	40,759	18,563	46	2	144	63	44	40,903	46
MAKODA	71	22,898	11,434	50	0	0	0	0	22,898	50
MINJIBIR	170	64,724	32,973	51	5	1,086	469	43	65,810	51
NASSARAWA	190	134,453	68,351	51	156	16,826	8,152	48	151,279	51
RANO	114	35,601	18,030	51	1	175	81	46	35,776	51
RIMIN GADO	93	37,213	16,969	46	1	88	38	43	37,301	46
ROGO	152	76,102	37,036	49	3	615	284	46	76,717	49
SHANONO	124	40,374	18,696	46	1	27	9	33	40,401	46
SUMAILA	93	34,470	15,079	44	3	290	136	47	34,760	44
TAKAI	110	42,579	19,541	46	3	330	146	44	42,909	46
TARAUNI	210	84,600	43,552	51	143	32,555	16,456	51	117,155	51
TOFA	89	33,333	16,873	51	1	294	136	46	33,627	51
TSANYAWA	116	45,160	22,174	49	0	0	0	0	45,160	49
TUDUN WADA	153	68,180	29,979	44	1	233	116	50	68,413	44
UNGOGO	201	126,823	64,146	51	0	2,000	965	48	128,823	51
WARAWA	120	36,050	17,821	49	19	0	0	0	36,050	49
WUDIL	123	54,995	28,310	51	5	599	258	43	55,594	51
Total	5,732	2,474,922	1,219,492	49	746	118,581	58,748	50	2,593,503	49

Table 3.7: Total Public and Private primary school enrolment by gender and LGA

LGA	Total			Aged 6-11		
	Pupils	Girls	% girls	Pupils	Girls	% girls
AJINGI	31,924	15,070	47	28,012	13,172	47
ALBASU	33,047	16,259	49	30,447	15,017	49
BAGWAI	23,128	9,523	41	21,376	8,832	41
BEBEJI	41,186	19,723	48	37,456	18,014	48
BICHI	79,531	39,443	50	71,155	35,251	50
BUNKURE	47,473	22,494	47	45,062	21,455	48
DALA	123,648	63,949	52	108,763	55,815	51
DAMBATTA	40,320	18,855	47	36,530	16,940	46
DAWAKIN KUDU	78,761	41,331	52	70,104	36,276	52
DAWAKIN TOFA	41,945	18,664	44	38,474	17,194	45
DOGUWA	44,195	19,919	45	38,014	17,069	45
FAGGE	95,897	47,810	50	84,504	41,823	49
GABASAWA	38,570	18,770	49	35,937	17,607	49
GARKO	30,505	13,820	45	28,107	12,772	45
GARUN MALAN	32,323	17,050	53	28,117	14,726	52
GAYA	45,517	22,245	49	40,473	19,597	48
GEZAWA	74,342	39,833	54	70,672	37,886	54
GWALE	119,811	61,502	51	104,167	53,314	51
GWARZO	56,098	26,574	47	51,537	24,543	48
KABO	47,300	22,691	48	45,607	21,884	48
KANO MUNICIPAL	89,647	45,165	50	75,559	37,986	50
KARAYE	53,712	25,858	48	50,058	24,148	48
KIBIYA	22,562	10,592	47	20,881	9,784	47
KIRU	62,759	30,210	48	55,136	26,555	48
KUMBOTSO	132,077	67,056	51	120,441	61,349	51
KUNCHI	28,799	14,090	49	25,718	12,504	49
KURA	44,850	22,908	51	37,192	18,274	49
MADOBI	40,903	18,626	46	37,308	17,429	47
MAKODA	22,898	11,434	50	20,797	10,542	51
MINJIBIR	65,810	33,442	51	60,462	30,810	51
NASSARAWA	151,279	76,503	51	132,735	66,799	50
RANO	35,776	18,111	51	31,454	15,857	50
RIMIN GADO	37,301	17,007	46	34,529	15,593	45
ROGO	76,717	37,320	49	69,142	33,283	48
SHANONO	40,401	18,705	46	34,734	15,910	46
SUMAILA	34,760	15,215	44	30,819	13,413	44
TAKAI	42,909	19,687	46	39,568	18,381	46
TARAUNI	117,155	60,008	51	101,118	52,150	52
TOFA	33,627	17,009	51	31,378	15,761	50
TSANYAWA	45,160	22,174	49	40,946	20,079	49
TUDUN WADA	68,413	30,095	44	64,524	28,370	44
UNGOGO	128,823	65,111	51	114,449	57,832	51
WARAWA	36,050	17,821	49	32,352	15,831	49
WUDIL	55,594	28,568	51	49,435	24,758	50
Total	2,593,503	1,278,240	49	2,325,249	1,142,585	49



Graph 1: Public Pre-Primary & Primary Schools Enrolment by Gender and Level

Table 3.8: Enrolment in public junior secondary schools by level, gender and LGA

LGA	JS1			JS2			JS3		
	Boys	Girls	Total	Boys	Girls	Total	Boys	Girls	Total
AJINGI	172	125	297	132	36	168	101	32	133
ALBASU	45	30	75	47	20	67	27	20	47
BAGWAI	119	183	302	93	141	234	82	112	194
BEBEJI	363	350	713	332	288	620	313	112	425
BICHI	683	685	1,368	595	591	1,186	418	473	891
BUNKURE	130	144	274	218	72	290	109	0	109
DALA	795	683	1,478	742	649	1,391	628	590	1,218
DAMBATTA	369	0	369	211	0	211	151	0	151
DAWAKIN KUDU	289	612	901	119	275	394	158	105	263
DAWAKIN TOFA	479	187	666	353	164	517	315	138	453
DOGUWA	156	268	424	90	196	286	83	136	219
FAGGE	929	853	1,782	887	420	1,307	948	342	1,290
GABASAWA	312	211	523	178	100	278	174	87	261
GARKO	434	286	720	226	81	307	226	44	270
GARUN MALAN	85	105	190	117	138	255	59	62	121
GAYA	78	32	110	94	47	141	17	37	54
GEZAWA	668	202	870	746	180	926	450	154	604
GWALE	614	668	1,282	382	430	812	171	247	418
GWARZO	728	89	817	607	0	607	628	0	628
KABO	337	0	337	316	0	316	347	0	347
KANO MUNICIPAL	1,479	1,114	2,593	1,491	1,178	2,669	1,380	968	2,348
KARAYE	495	147	642	398	147	545	384	31	415
KIBIYA	12	231	243	17	65	82	24	44	68
KIRU	608	68	676	579	49	628	488	42	530
KUMBOTSO	790	524	1,314	386	67	453	276	137	413
KUNCHI	165	106	271	132	115	247	138	13	151
KURA	0	201	201	0	150	150	0	147	147
MADOBI	193	263	456	48	197	245	35	176	211
MAKODA	88	52	140	62	20	82	58	36	94
MINJIBIR	1,123	222	1,345	756	78	834	673	102	775
NASSARAWA	2,056	1,748	3,804	1,487	1,020	2,507	1,006	820	1,826
RANO	74	143	217	136	167	303	43	0	43
RIMIN GADO	187	131	318	193	184	377	152	129	281
ROGO	592	423	1,015	518	376	894	438	244	682
SHANONO	160	54	214	130	52	182	147	57	204
SUMAILA	172	150	322	116	97	213	117	77	194
TAKAI	119	274	393	128	267	395	124	67	191
TARAUNI	476	301	777	367	190	557	351	237	588
TOFA	153	135	288	153	152	305	156	94	250
TSANYAWA	352	239	591	258	205	463	228	165	393
TUDUN WADA	339	304	643	200	257	457	123	176	299
UNGOGO	859	1,023	1,882	709	683	1,392	530	285	815
WARAWA	247	231	478	168	25	193	141	19	160
WUDIL	71	177	248	63	181	244	74	152	226
Total	18,595	13,974	32,569	14,980	9,750	24,730	12,491	6,909	19,400

Table 3.9: Enrolment in private junior secondary schools by level, gender and LGA

LGA	JS1			JS2			JS3		
	Boys	Girls	Total	Boys	Girls	Total	Boys	Girls	Total
AJINGI	0	0	0	0	0	0	0	0	0
ALBASU	0	0	0	0	0	0	0	0	0
BAGWAI	0	0	0	0	0	0	0	0	0
BEBEJI	0	44	44	0	23	23	0	50	50
BICHI	68	72	140	63	41	104	49	33	82
BUNKURE	0	0	0	0	0	0	0	0	0
DALA	578	1,461	2,039	448	1,475	1,923	435	1,080	1,515
DAMBATTA	34	32	66	37	28	65	10	18	28
DAWAKIN KUDU	62	302	364	54	245	299	24	75	99
DAWAKIN TOFA	1	2	3	0	0	0	0	0	0
DOGUWA	0	0	0	0	0	0	0	0	0
FAGGE	878	793	1,671	877	747	1,624	771	739	1,510
GABASAWA	0	0	0	0	0	0	0	0	0
GARKO	0	0	0	0	0	0	0	0	0
GARUN MALAN	13	11	24	28	16	44	22	15	37
GAYA	0	0	0	0	0	0	0	0	0
GEZAWA	0	0	0	0	0	0	0	0	0
GWALE	1,883	1,676	3,559	1,735	1,748	3,483	1,737	1,563	3,300
GWARZO	82	0	82	92	0	92	74	0	74
KABO	0	0	0	0	0	0	0	0	0
KANO MUNICIPAL	439	1,193	1,632	367	1,029	1,396	379	894	1,273
KARAYE	11	6	17	4	6	10	6	5	11
KIBIYA	97	72	169	87	92	179	80	62	142
KIRU	36	25	61	35	43	78	35	11	46
KUMBOTSO	1,262	1,393	2,655	1,026	1,187	2,213	770	711	1,481
KUNCHI	0	0	0	0	0	0	0	0	0
KURA	145	136	281	122	119	241	65	73	138
MADOBI	22	0	22	28	0	28	20	0	20
MAKODA	0	0	0	0	0	0	0	0	0
MINJIBIR	0	0	0	0	0	0	0	0	0
NASSARAWA	1,445	1,626	3,071	1,433	1,605	3,038	1,343	2,155	3,498
RANO	0	0	0	0	0	0	0	0	0
RIMIN GADO	0	0	0	0	0	0	0	0	0
ROGO	54	36	90	39	22	61	28	24	52
SHANONO	0	0	0	0	0	0	0	0	0
SUMAILA	19	20	39	10	16	26	18	23	41
TAKAI	0	0	0	0	0	0	0	0	0
TARAUNI	1,173	1,467	2,640	1,004	1,109	2,113	824	923	1,747
TOFA	0	130	130	0	87	87	0	45	45
TSANYAWA	0	0	0	0	0	0	0	0	0
TUDUN WADA	98	64	162	89	66	155	55	27	82
UNGOGO	204	526	730	143	447	590	158	319	477
WARAWA	0	0	0	0	0	0	0	0	0
WUDIL	17	23	40	16	15	31	10	7	17
Total	8,621	11,110	19,731	7,737	10,166	17,903	6,913	8,852	15,765

*Decrease in the number of private schools could be as a result of government's enforcement of private schools registration

Table 3.10: Public and private junior secondary school enrolment by gender and LGA

LGA	Public				Private				Total	
	Number of Schools	Pupils	Girls	% girls	Number of Schools	Pupils	Girls	% girls	Pupils	% girls
AJINGI	5	598	193	32	0	0	0	0	598	32
ALBASU	2	189	70	37	0	0	0	0	189	37
BAGWAI	8	730	436	60	0	0	0	0	730	60
BEBEJI	11	1,758	750	43	1	117	117	100	1,875	46
BICHI	16	3,445	1,749	51	3	326	146	45	3,771	50
BUNKURE	7	673	216	32	0	0	0	0	673	32
DALA	10	4,087	1,922	47	34	5,477	4,016	73	9,564	62
DAMBATTA	5	731	0	0	3	159	78	49	890	9
DAWAKIN KUDU	9	1,558	992	64	4	762	622	82	2,320	70
DAWAKIN TOFA	11	1,636	489	30	0	3	2	67	1,639	30
DOGUWA	8	929	600	65	0	0	0	0	929	65
FAGGE	8	4,379	1,615	37	60	4,805	2,279	47	9,184	42
GABASAWA	6	1,062	398	37	0	0	0	0	1,062	37
GARKO	8	1,297	411	32	0	0	0	0	1,297	32
GARUN MALAN	2	566	305	54	1	105	42	40	671	52
GAYA	4	305	116	38	0	0	0	0	305	38
GEZAWA	9	2,400	536	22	0	0	0	0	2,400	22
GWALE	7	2,512	1,345	54	53	10,342	4,987	48	12,854	49
GWARZO	9	2,052	89	4	1	248	0	0	2,300	4
KABO	5	1,000	0	0	0	0	0	0	1,000	0
KANO MUNICIPAL	22	7,610	3,260	43	38	4,301	3,116	72	11,911	54
KARAYE	10	1,602	325	20	1	38	17	45	1,640	21
KIBIYA	5	393	340	87	1	490	226	46	883	64
KIRU	12	1,834	159	9	2	185	79	43	2,019	12
KUMBOTSO	11	2,180	728	33	73	6,349	3,291	52	8,529	47
KUNCHI	7	669	234	35	0	0	0	0	669	35
KURA	2	498	498	100	5	660	328	50	1,158	71
MADOBI	5	912	636	70	1	70	0	0	982	65
MAKODA	4	316	108	34	0	0	0	0	316	34
MINJIBIR	14	2,954	402	14	0	0	0	0	2,954	14
NASSARAWA	20	8,137	3,588	44	89	9,607	5,386	56	17,744	51
RANO	6	563	310	55	0	0	0	0	563	55
RIMIN GADO	7	976	444	45	0	0	0	0	976	45
ROGO	14	2,591	1,043	40	3	203	82	40	2,794	40
SHANONO	6	600	163	27	0	0	0	0	600	27
SUMAILA	7	729	324	44	1	106	59	56	835	46
TAKAI	6	979	608	62	0	0	0	0	979	62
TARAUNI	6	1,922	728	38	69	6,500	3,499	54	8,422	50
TOFA	6	843	381	45	1	262	262	100	1,105	58
TSANYAWA	10	1,447	609	42	0	0	0	0	1,447	42
TUDUN WADA	9	1,399	737	53	3	399	157	39	1,798	50
UNGOGO	13	4,089	1,991	49	0	1,797	1,292	72	5,886	56
WARAWA	7	831	275	33	12	0	0	0	831	33
WUDIL	4	718	510	71	3	88	45	51	806	69
Total	363	76,699	30,633	40	462	53,399	30,128	56	130,098	47

Excluding Rearticulated Junior Secondary Schools.

Table 3.11: Public and Private Junior secondary school enrolment by gender and LGA

LGA	Total			Aged 12-14		
	Pupils	Girls	% girls	Total	Female	% female
AJINGI	598	193	32	469	193	41
ALBASU	189	70	37	142	50	35
BAGWAI	730	436	60	599	358	60
BEBEJI	1,875	867	46	1,571	672	43
BICHI	3,771	1,895	50	2,934	1,537	52
BUNKURE	673	216	32	562	186	33
DALA	9,564	5,938	62	6,510	3,984	61
DAMBATTA	890	78	9	582	56	10
DAWAKIN KUDU	2,320	1,614	70	1,857	1,314	71
DAWAKIN TOFA	1,639	491	30	1,305	381	29
DOGUWA	929	600	65	750	481	64
FAGGE	9,184	3,894	42	7,024	2,961	42
GABASAWA	1,062	398	37	958	349	36
GARKO	1,297	411	32	1,155	359	31
GARUN MALAN	671	347	52	455	234	51
GAYA	305	116	38	286	116	41
GEZAWA	2,400	536	22	1,623	312	19
GWALE	12,854	6,332	49	9,292	4,645	50
GWARZO	2,300	89	4	1,926	89	5
KABO	1,000	0	0	907	0	0
KANO MUNICIPAL	11,911	6,376	54	8,533	4,105	48
KARAYE	1,640	342	21	1,216	248	20
KIBIYA	883	566	64	770	488	63
KIRU	2,019	238	12	1,494	141	9
KUMBOTSO	8,529	4,019	47	6,730	3,060	45
KUNCHI	669	234	35	539	183	34
KURA	1,158	826	71	498	417	84
MADOBI	982	636	65	704	447	63
MAKODA	316	108	34	242	66	27
MINJIBIR	2,954	402	14	2,570	375	15
NASSARAWA	17,744	8,974	51	13,531	6,694	49
RANO	563	310	55	468	274	59
RIMIN GADO	976	444	45	768	298	39
ROGO	2,794	1,125	40	2,323	896	39
SHANONO	600	163	27	483	111	23
SUMAILA	835	383	46	704	304	43
TAKAI	979	608	62	752	430	57
TARAUNI	8,422	4,227	50	6,078	2,839	47
TOFA	1,105	643	58	936	561	60
TSANYAWA	1,447	609	42	1,295	565	44
TUDUN WADA	1,798	894	50	1,572	713	45
UNGOGO	5,886	3,283	56	4,247	2,302	54
WARAWA	831	275	33	720	220	31
WUDIL	806	555	69	621	435	70
Total	130,098	60,761	47	98,701	44,449	45

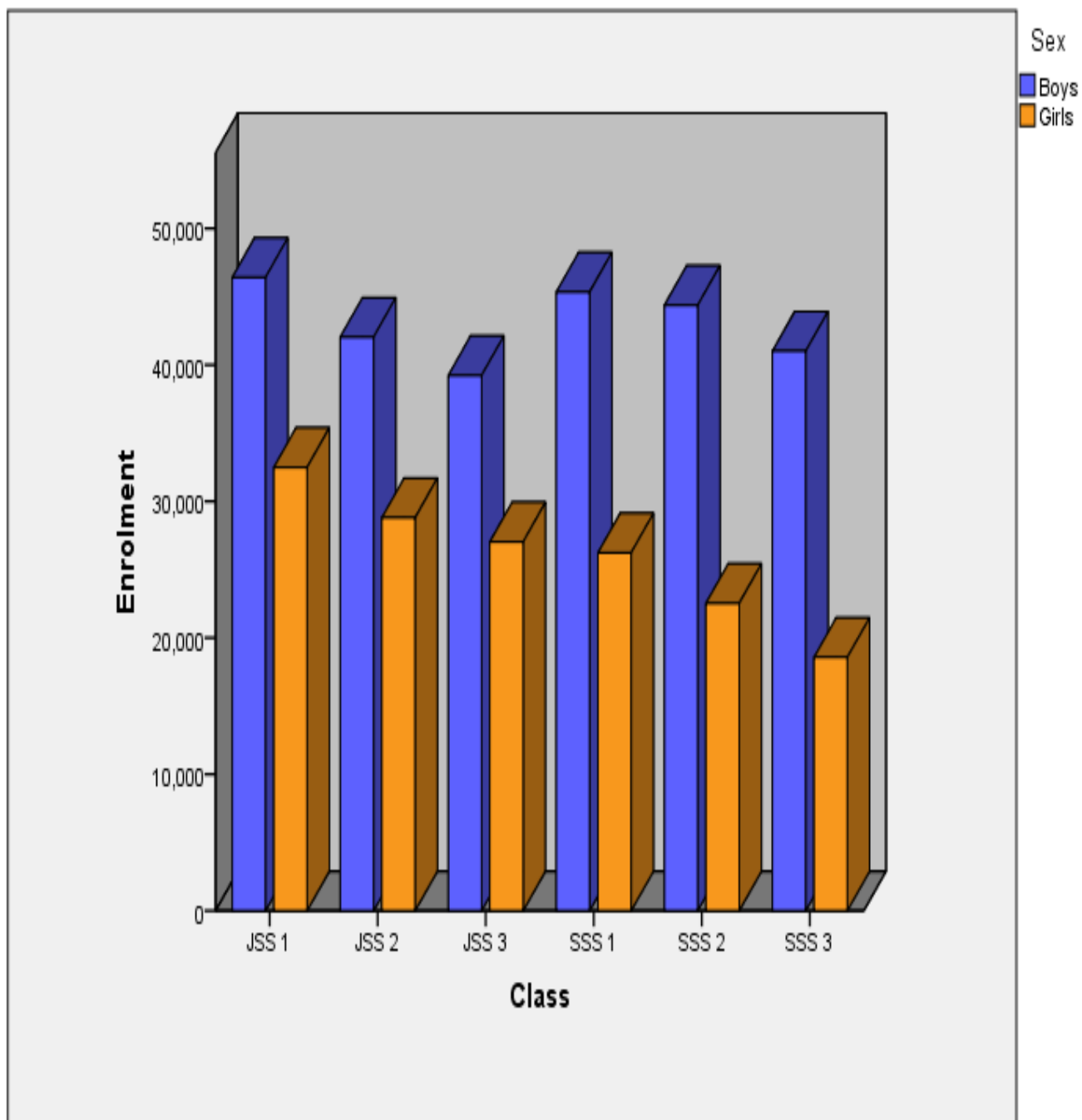
Excluding Rearticulated Junior Secondary Schools.

Table 3.12a: Enrolment in public (JS) Rearticulated Sec. Schools by level, gender and LGA

LGA	JSS1			JSS2			JSS3		
	Boys	Girls	Total	Boys	Girls	Total	Boys	Girls	Total
AJINGI	589	72	661	425	58	483	309	122	431
ALBASU	597	602	1,199	545	452	997	538	439	977
BAGWAI	760	141	901	604	127	731	458	75	533
BEBEJI	1,194	475	1,669	957	375	1,332	961	298	1,259
BICHI	1,147	659	1,806	1,001	548	1,549	840	699	1,539
BUNKURE	742	337	1,079	691	299	990	697	275	972
DALA	1,700	2,504	4,204	1,750	2,064	3,814	1,607	1,785	3,392
DAMBATTA	839	1,137	1,976	896	1,091	1,987	701	909	1,610
DAWAKIN KUDU	1,529	991	2,520	1,401	854	2,255	1,693	764	2,457
DAWAKIN TOFA	1,108	531	1,639	1,030	504	1,534	914	437	1,351
DOGUWA	576	140	716	596	130	726	555	73	628
FAGGE	3,921	2,378	6,299	3,625	2,165	5,790	3,254	2,171	5,425
GABASAWA	576	377	953	533	226	759	524	241	765
GARKO	454	176	630	448	234	682	366	324	690
GARUN MALAN	597	297	894	565	320	885	587	190	777
GAYA	1,197	545	1,742	815	491	1,306	703	528	1,231
GEZAWA	1,159	1,328	2,487	1,340	1,020	2,360	1,278	1,181	2,459
GWALE	2,202	3,000	5,202	2,774	2,874	5,648	2,786	2,893	5,679
GWARZO	888	1,023	1,911	762	905	1,667	781	778	1,559
KABO	577	666	1,243	537	490	1,027	555	504	1,059
KANO MUNICIPAL	2,512	1,709	4,221	2,589	1,761	4,350	2,314	1,661	3,975
KARAYE	684	350	1,034	552	414	966	452	254	706
KIBIYA	471	0	471	401	0	401	424	0	424
KIRU	924	840	1,764	975	582	1,557	917	539	1,456
KUMBOTSO	4,646	2,375	7,021	2,597	2,166	4,763	2,592	2,367	4,959
KUNCHI	227	130	357	240	92	332	177	85	262
KURA	1,042	942	1,984	1,009	906	1,915	977	782	1,759
MADObI	958	1,043	2,001	895	833	1,728	821	919	1,740
MAKODA	348	123	471	351	108	459	319	81	400
MINJIBIR	327	545	872	265	481	746	212	371	583
NASSARAWA	329	0	329	291	0	291	421	0	421
RANO	873	558	1,431	850	508	1,358	859	447	1,306
RIMIN GADO	364	219	583	323	128	451	230	102	332
ROGO	867	626	1,493	848	527	1,375	811	398	1,209
SHANONO	551	211	762	484	159	643	512	152	664
SUMAILA	972	637	1,609	686	570	1,256	708	423	1,131
TAKAI	869	550	1,419	845	491	1,336	715	420	1,135
TARAUNI	1,217	1,264	2,481	1,262	1,212	2,474	1,371	1,080	2,451
TOFA	650	129	779	654	154	808	524	160	684
TSANYAWA	584	120	704	480	120	600	476	110	586
TUDUN WADA	820	792	1,612	759	662	1,421	659	673	1,332
UNGOGO	2,320	1,218	3,538	1,924	1,115	3,039	1,582	915	2,497
WARAWA	295	0	295	290	32	322	221	0	221
WUDIL	1,200	728	1,928	1,164	551	1,715	824	406	1,230
Total	46,402	32,488	78,890	42,029	28,799	70,828	39,225	27,031	66,256

3.12b: Enrolment in public (SS) Rearticulated Secondary Schools by level, gender and LGA

LGA	SS1			SS2			SS3		
	Boys	Girls	Total	Boys	Girls	Total	Boys	Girls	Total
AJINGI	446	75	521	440	65	505	448	21	469
ALBASU	470	448	918	489	410	899	482	401	883
BAGWAI	416	53	469	366	21	387	332	17	349
BEBEJI	1,009	269	1,278	902	197	1,099	797	100	897
BICHI	1,254	775	2,029	1,120	738	1,858	1,172	498	1,670
BUNKURE	604	207	811	596	152	748	537	64	601
DALA	1,726	2,479	4,205	1,941	2,162	4,103	1,822	2,022	3,844
DAMBATTA	1,579	986	2,565	1,409	864	2,273	759	552	1,311
DAWAKIN KUDU	1,505	581	2,086	1,441	390	1,831	1,176	311	1,487
DAWAKIN TOFA	1,531	280	1,811	1,438	215	1,653	1,496	179	1,675
DOGUWA	480	146	626	436	50	486	375	13	388
FAGGE	3,789	2,133	5,922	4,412	1,788	6,200	3,801	1,730	5,531
GABASAWA	633	149	782	613	125	738	610	82	692
GARKO	477	665	1,142	586	380	966	578	447	1,025
GARUN MALAN	457	117	574	402	68	470	386	57	443
GAYA	1,142	277	1,419	1,075	300	1,375	924	116	1,040
GEZAWA	1,090	1,056	2,146	884	1,025	1,909	788	899	1,687
GWALE	3,019	2,944	5,963	2,999	3,051	6,050	3,223	2,980	6,203
GWARZO	1,497	645	2,142	1,468	403	1,871	1,343	271	1,614
KABO	462	457	919	469	455	924	354	324	678
KANO MUNICIPAL	3,505	2,339	5,844	3,917	2,471	6,388	3,863	2,104	5,967
KARAYE	822	142	964	746	131	877	735	124	859
KIBIYA	282	0	282	282	0	282	294	0	294
KIRU	1,241	352	1,593	1,133	278	1,411	1,051	163	1,214
KUMBOTSO	2,904	1,727	4,631	2,370	1,402	3,772	2,148	1,212	3,360
KUNCHI	165	45	210	188	34	222	185	13	198
KURA	706	557	1,263	691	700	1,391	839	350	1,189
MADOBI	802	535	1,337	660	258	918	671	230	901
MAKODA	361	84	445	318	82	400	381	82	463
MINJIBIR	528	248	776	508	151	659	438	102	540
NASSARAWA	412	0	412	333	0	333	395	0	395
RANO	858	415	1,273	802	368	1,170	815	207	1,022
RIMIN GADO	365	78	443	367	62	429	297	46	343
ROGO	741	232	973	735	171	906	663	93	756
SHANONO	316	44	360	356	20	376	321	18	339
SUMAILA	700	552	1,252	663	389	1,052	671	372	1,043
TAKAI	658	356	1,014	788	280	1,068	603	236	839
TARAUNI	1,728	1,243	2,971	1,520	1,082	2,602	1,172	840	2,012
TOFA	535	150	685	633	111	744	518	80	598
TSANYAWA	412	78	490	437	60	497	449	30	479
TUDUN WADA	766	774	1,540	746	790	1,536	647	547	1,194
UNGOGO	1,635	1,006	2,641	1,601	564	2,165	1,394	472	1,866
WARAWA	275	0	275	143	0	143	215	0	215
WUDIL	1,039	531	1,570	949	267	1,216	840	162	1,002
Total	45,342	26,230	71,572	44,372	22,530	66,902	41,008	18,567	59,575



Graph 2: Rearticulated Schools Enrolment by Gender and Level

Table 3.13: Public Rearticulated Secondary School enrolment by gender and LGA

LGA	Public Reart. (JSS)				Public Reart. (SSS)			Total	
	Number of Schools	Pupils	Girls	% girls	Pupils	Girls	% girls	Pupils	% girls
AJINGI	7	1,575	252	16	1,495	161	11	3,070	13
ALBASU	12	3,173	1,493	47	2,700	1,259	47	5,873	47
BAGWAI	7	2,165	343	16	1,205	91	8	3,370	13
BEBEJI	16	4,260	1,148	27	3,274	566	17	7,534	23
BICHI	11	4,894	1,906	39	5,557	2,011	36	10,451	37
BUNKURE	12	3,041	911	30	2,160	423	20	5,201	26
DALA	16	11,410	6,353	56	12,152	6,663	55	23,562	55
DAMBATTA	17	5,573	3,137	56	6,149	2,402	39	11,722	47
DAWAKIN KUDU	17	7,232	2,609	36	5,404	1,282	24	12,636	31
DAWAKIN TOFA	12	4,524	1,472	33	5,139	674	13	9,663	22
DOGUWA	12	2,070	343	17	1,500	209	14	3,570	15
FAGGE	18	17,514	6,714	38	17,653	5,651	32	35,167	35
GABASAWA	7	2,477	844	34	2,212	356	16	4,689	26
GARKO	8	2,002	734	37	3,133	1,492	48	5,135	43
GARUN MALAN	10	2,556	807	32	1,487	242	16	4,043	26
GAYA	12	4,279	1,564	37	3,834	693	18	8,113	28
GEZAWA	14	7,306	3,529	48	5,742	2,980	52	13,048	50
GWALE	21	16,529	8,767	53	18,216	8,975	49	34,745	51
GWARZO	17	5,137	2,706	53	5,627	1,319	23	10,764	37
KABO	8	3,329	1,660	50	2,521	1,236	49	5,850	50
KANO MUNICIPAL	19	12,546	5,131	41	18,199	6,914	38	30,745	39
KARAYE	9	2,706	1,018	38	2,700	397	15	5,406	26
KIBIYA	5	1,296	0	0	858	0	0	2,154	0
KIRU	14	4,777	1,961	41	4,218	793	19	8,995	31
KUMBOTSO	26	16,743	6,908	41	11,763	4,341	37	28,506	39
KUNCHI	5	951	307	32	630	92	15	1,581	25
KURA	12	5,658	2,630	46	3,843	1,607	42	9,501	45
MADObI	11	5,469	2,795	51	3,156	1,023	32	8,625	44
MAKODA	8	1,330	312	23	1,308	248	19	2,638	21
MINJIBIR	7	2,201	1,397	63	1,975	501	25	4,176	45
NASSARAWA	3	1,041	0	0	1,140	0	0	2,181	0
RANO	14	4,095	1,513	37	3,465	990	29	7,560	33
RIMIN GADO	5	1,366	449	33	1,215	186	15	2,581	25
ROGO	13	4,077	1,551	38	2,635	496	19	6,712	30
SHANONO	6	2,069	522	25	1,075	82	8	3,144	19
SUMAILA	10	3,996	1,630	41	3,347	1,313	39	7,343	40
TAKAI	14	3,890	1,461	38	2,921	872	30	6,811	34
TARAUNI	14	7,406	3,556	48	7,585	3,165	42	14,991	45
TOFA	7	2,271	443	20	2,027	341	17	4,298	18
TSANYAWA	7	1,890	350	19	1,466	168	11	3,356	15
TUDUN WADA	14	4,365	2,127	49	4,270	2,111	49	8,635	49
UNGOGO	17	9,074	3,248	36	6,672	2,042	31	15,746	34
WARAWA	5	838	32	4	633	0	0	1,471	2
WUDIL	13	4,873	1,685	35	3,788	960	25	8,661	31
Total	512	215,974	88,318	41	198,049	67,327	34	414,023	38

Table 3.14: Public Rearticulated(JS)SecondarySchool enrolment by gender, age and LGA

LGA	Public Reart. (JSS)			Aged 12-14 (JSS)		
	Pupils	Girls	% Girls	Pupils	Girls	% Girls
AJINGI	1,575	252	16	1,299	209	16
ALBASU	3,173	1,493	47	2,507	1,256	50
BAGWAI	2,165	343	16	1,762	278	16
BEBEJI	4,260	1,148	27	3,051	836	27
BICHI	4,894	1,906	39	3,526	1,155	33
BUNKURE	3,041	911	30	2,084	719	35
DALA	11,410	6,353	56	7,400	3,638	49
DAMBATTA	5,573	3,137	56	4,250	2,481	58
DAWAKIN KUDU	7,232	2,609	36	5,382	2,047	38
DAWAKIN TOFA	4,524	1,472	33	3,422	1,229	36
DOGUWA	2,070	343	17	1,621	327	20
FAGGE	17,514	6,714	38	12,411	5,204	42
GABASAWA	2,477	844	34	1,878	634	34
GARKO	2,002	734	37	1,546	632	41
GARUN MALAN	2,556	807	32	1,684	582	35
GAYA	4,279	1,564	37	3,445	1,186	34
GEZAWA	7,306	3,529	48	5,209	2,444	47
GWALE	16,529	8,767	53	12,901	6,734	52
GWARZO	5,137	2,706	53	3,667	1,955	53
KABO	3,329	1,660	50	2,420	1,354	56
KANO MUNICIPAL	12,546	5,131	41	8,869	3,547	40
KARAYE	2,706	1,018	38	2,057	883	43
KIBIYA	1,296	0	0	794	0	0
KIRU	4,777	1,961	41	3,185	1,380	43
KUMBOTSO	16,743	6,908	41	12,857	4,985	39
KUNCHI	951	307	32	731	234	32
KURA	5,658	2,630	46	4,069	1,923	47
MADOBI	5,469	2,795	51	3,773	1,787	47
MAKODA	1,330	312	23	1,038	263	25
MINJIBIR	2,201	1,397	63	1,697	1,115	66
NASSARAWA	1,041	0	0	695	0	0
RANO	4,095	1,513	37	2,944	1,217	41
RIMIN GADO	1,366	449	33	855	270	32
ROGO	4,077	1,551	38	3,219	1,186	37
SHANONO	2,069	522	25	1,478	316	21
SUMAILA	3,996	1,630	41	2,912	1,352	46
TAKAI	3,890	1,461	38	2,769	852	31
TARAUNI	7,406	3,556	48	5,776	2,796	48
TOFA	2,271	443	20	1,761	399	23
TSANYAWA	1,890	350	19	1,422	220	15
TUDUN WADA	4,365	2,127	49	2,940	1,452	49
UNGOGO	9,074	3,248	36	6,348	2,073	33
WARAWA	838	32	4	374	0	0
WUDIL	4,873	1,685	35	3,651	1,211	33
TOTAL	215,974	88,318	41	157,679	64,361	41

Table 3.15: Public Rearticulated (SS) secondary school enrolment by gender, age and LGA

LGA	Public Reart. (SSS)			Aged 15-17 (SSS)		
	Pupils	Girls	% girls	Pupils	Girls	% girls
AJINGI	1,495	161	11	1,183	151	13
ALBASU	2,700	1,259	47	1,976	1,007	51
BAGWAI	1,205	91	8	922	91	10
BEBEJI	3,274	566	17	2,398	409	17
BICHI	5,557	2,011	36	3,691	965	26
BUNKURE	2,160	423	20	1,421	374	26
DALA	12,152	6,663	55	8,132	4,339	53
DAMBATTA	6,149	2,402	39	4,706	1,617	34
DAWAKIN KUDU	5,404	1,282	24	4,027	984	24
DAWAKIN TOFA	5,139	674	13	3,919	461	12
DOGUWA	1,500	209	14	918	111	12
FAGGE	17,653	5,651	32	11,930	4,760	40
GABASAWA	2,212	356	16	1,489	314	21
GARKO	3,133	1,492	48	2,183	1,272	58
GARUN MALAN	1,487	242	16	740	155	21
GAYA	3,834	693	18	2,801	382	14
GEZAWA	5,742	2,980	52	3,898	1,849	47
GWALE	18,216	8,975	49	12,790	6,226	49
GWARZO	5,627	1,319	23	3,952	1,003	25
KABO	2,521	1,236	49	2,081	1,191	57
KANO MUNICIPAL	18,199	6,914	38	12,505	5,159	41
KARAYE	2,700	397	15	1,953	308	16
KIBIYA	858	0	0	556	0	0
KIRU	4,218	793	19	2,712	529	20
KUMBOTSO	11,763	4,341	37	9,228	3,523	38
KUNCHI	630	92	15	395	79	20
KURA	3,843	1,607	42	2,523	1,185	47
MADOBI	3,156	1,023	32	2,068	697	34
MAKODA	1,308	248	19	836	193	23
MINJIBIR	1,975	501	25	1,388	453	33
NASSARAWA	1,140	0	0	793	0	0
RANO	3,465	990	29	2,504	811	32
RIMIN GADO	1,215	186	15	865	119	14
ROGO	2,635	496	19	2,106	328	16
SHANONO	1,075	82	8	916	56	6
SUMAILA	3,347	1,313	39	2,451	982	40
TAKAI	2,921	872	30	2,281	683	30
TARAUNI	7,585	3,165	42	5,711	2,390	42
TOFA	2,027	341	17	1,572	302	19
TSANYAWA	1,466	168	11	1,046	151	14
TUDUN WADA	4,270	2,111	49	2,935	1,504	51
UNGOGO	6,672	2,042	31	4,771	1,523	32
WARAWA	633	0	0	315	0	0
WUDIL	3,788	960	25	2,818	653	23
TOTAL	198,049	67,327	34	140,405	49,289	35

Table 3.16: Public Senior Secondary School Enrolment by Gender and LGA

LGA	SS1			SS2			SS3		
	Boys	Girls	Total	Boys	Girls	Total	Boys	Girls	Total
AJINGI	0	0	0	0	0	0	0	0	0
ALBASU	0	0	0	0	0	0	0	0	0
BAGWAI	88	0	88	71	0	57	98	0	98
BEBEJI	0	0	0	0	0	0	0	0	0
BICHI	0	0	0	0	0	0	0	0	0
BUNKURE	0	0	0	0	0	0	0	0	0
DALA	0	0	0	0	0	0	0	0	0
DAMBATTA	0	0	0	0	0	0	0	0	0
DAWAKIN KUDU	0	0	0	0	0	0	0	0	0
DAWAKIN TOFA	0	0	0	0	0	0	0	0	0
DOGUWA	0	0	0	0	0	0	0	0	0
FAGGE	0	0	0	0	0	0	0	0	0
GABASAWA	0	0	0	0	0	0	0	0	0
GARKO	0	0	0	0	0	0	0	0	0
GARUN MALAN	0	0	0	0	0	0	0	0	0
GAYA	0	0	0	0	0	0	0	0	0
GEZAWA	0	0	0	0	0	0	0	0	0
GWALE	0	0	0	0	0	0	0	0	0
GWARZO	0	0	0	0	0	0	0	0	0
KABO	0	0	0	0	0	0	0	0	0
KANO MUNICIPAL	0	317	317	0	454	454	0	468	468
KARAYE	0	0	0	0	0	0	0	0	0
KIBIYA	0	0	0	0	0	0	0	0	0
KIRU	0	0	0	0	0	0	0	0	0
KUMBOTSO	0	0	0	0	0	0	0	0	0
KUNCHI	0	0	0	0	0	0	0	0	0
KURA	0	0	0	0	0	0	0	0	0
MADObI	0	0	0	0	0	0	0	0	0
MAKODA	0	0	0	0	0	0	0	0	0
MINJIBIR	0	0	0	0	0	0	0	0	0
NASSARAWA	0	0	0	0	0	0	0	0	0
RANO	0	0	0	0	0	0	0	0	0
RIMIN GADO	0	0	0	0	0	0	0	0	0
ROGO	99	0	99	124	0	106	100	0	100
SHANONO	0	0	0	0	0	0	0	0	0
SUMAILA	0	0	0	0	0	0	0	0	0
TAKAI	0	0	0	0	0	0	0	0	0
TARAUNI	0	0	0	0	0	0	0	0	0
TOFA	0	0	0	0	0	0	0	0	0
TSANYAWA	0	0	0	0	0	0	0	0	0
TUDUN WADA	53	0	53	34	0	34	29	0	29
UNGOGO	0	0	0	0	0	0	0	0	0
WARAWA	0	0	0	0	0	0	0	0	0
WUDIL	385	0	385	395	0	315	470	0	470
TOTAL	625	317	942	624	454	1,078	697	468	1,165

Table 3.17: Enrolment in private senior secondary schools by level, gender and LGA

LGA	SS1			SS2			SS3		
	Boys	Girls	Total	Boys	Girls	Total	Boys	Girls	Total
AJINGI	0	0	0	0	0	0	0	0	0
ALBASU	0	0	0	0	0	0	0	0	0
BAGWAI	0	0	0	0	0	0	0	0	0
BEBEJI	0	58	58	0	34	34	0	33	33
BICHI	31	22	53	10	28	38	21	21	42
BUNKURE	0	0	0	0	0	0	0	0	0
DALA	258	816	1,074	243	633	876	276	488	764
DAMBATTA	2	3	5	0	0	0	0	0	0
DAWAKIN KUDU	14	75	89	18	40	58	25	19	44
DAWAKIN TOFA	0	0	0	0	0	0	0	0	0
DOGUWA	0	0	0	0	0	0	0	0	0
FAGGE	748	739	1,487	738	693	1,431	966	871	1,837
GABASAWA	0	0	0	0	0	0	0	0	0
GARKO	0	0	0	0	0	0	0	0	0
GARUN MALAN	0	0	0	0	0	0	0	0	0
GAYA	0	0	0	0	0	0	0	0	0
GEZAWA	0	0	0	0	0	0	0	0	0
GWALE	1,480	1,426	2,906	1,532	1,449	2,981	1,584	1,358	2,942
GWARZO	112	0	112	133	0	133	102	0	102
KABO	0	0	0	0	0	0	0	0	0
KANO MUNICIPAL	220	570	790	253	441	694	230	394	624
KARAYE	0	0	0	0	0	0	0	0	0
KIBIYA	70	68	138	60	42	102	35	23	58
KIRU	12	0	12	20	0	20	0	0	0
KUMBOTSO	555	660	1,215	578	614	1,192	992	562	1,554
KUNCHI	0	0	0	0	0	0	0	0	0
KURA	14	19	33	4	11	15	0	10	10
MADOBI	36	0	36	52	0	52	19	0	19
MAKODA	0	0	0	0	0	0	0	0	0
MINJIBIR	0	0	0	0	0	0	0	0	0
NASSARAWA	1,110	1,070	2,180	1,050	1,126	2,176	1,076	1,114	2,190
RANO	0	0	0	0	0	0	0	0	0
RIMIN GADO	0	0	0	0	0	0	0	0	0
ROGO	12	3	15	10	3	13	0	0	0
SHANONO	0	0	0	0	0	0	0	0	0
SUMAILA	28	17	45	32	20	52	26	5	31
TAKAI	0	0	0	0	0	0	0	0	0
TARAUNI	867	1,104	1,971	689	979	1,668	572	698	1,270
TOFA	0	44	44	0	47	47	0	0	0
TSANYAWA	0	0	0	0	0	0	0	0	0
TUDUN WADA	8	8	16	0	0	0	0	25	25
UNGOGO	108	273	381	90	140	230	104	134	238
WARAWA	0	0	0	0	0	0	0	0	0
WUDIL	9	5	14	7	3	10	0	0	0
TOTAL	5,694	6,980	12,674	5,519	6,303	11,822	6,028	5,755	11,783

Table 3.18: Public and private Senior Secondary School Enrolment by Gender and LGA

LGA	Public				Private				Total	
	Number of Schools	Students	Girls	% girls	Number of Schools	Students	Girls	% girls	Students	% girls
AJINGI	0	0	0	0	0	0	0	0	0	0
ALBASU	0	0	0	0	0	0	0	0	0	0
BAGWAI	1	243	0	0	0	0	0	0	243	0
BEBEJI	0	0	0	0	1	125	125	100	125	100
BICHI	0	0	0	0	2	133	71	53	133	53
BUNKURE	0	0	0	0	0	0	0	0	0	0
DALA	0	0	0	0	20	2,714	1,937	71	2,714	71
DAMBATTA	0	0	0	0	1	5	3	60	5	60
DAWAKIN KUDU	0	0	0	0	2	191	134	70	191	70
DAWAKIN TOFA	0	0	0	0	0	0	0	0	0	0
DOGUWA	0	0	0	0	0	0	0	0	0	0
FAGGE	0	0	0	0	49	4,755	2,303	48	4,755	48
GABASAWA	0	0	0	0	0	0	0	0	0	0
GARKO	0	0	0	0	0	0	0	0	0	0
GARUN MALAN	0	0	0	0	0	0	0	0	0	0
GAYA	0	0	0	0	0	0	0	0	0	0
GEZAWA	0	0	0	0	0	0	0	0	0	0
GWALE	0	0	0	0	38	8,829	4,233	48	8,829	48
GWARZO	0	0	0	0	1	347	0	0	347	0
KABO	0	0	0	0	0	0	0	0	0	0
KANO MUNICIPAL	1	1,239	1,239	100	17	2,108	1,405	67	3,347	79
KARAYE	0	0	0	0	0	0	0	0	0	0
KIBIYA	0	0	0	0	1	298	133	45	298	45
KIRU	0	0	0	0	1	32	0	0	32	0
KUMBOTSO	0	0	0	0	39	3,961	1,836	46	3,961	46
KUNCHI	0	0	0	0	0	0	0	0	0	0
KURA	0	0	0	0	2	58	40	69	58	69
MADObI	0	0	0	0	0	107	0	0	107	0
MAKODA	0	0	0	0	0	0	0	0	0	0
MINJIBIR	0	0	0	0	0	0	0	0	0	0
NASSARAWA	0	0	0	0	63	6,546	3,310	51	6,546	51
RANO	0	0	0	0	0	0	0	0	0	0
RIMIN GADO	0	0	0	0	0	0	0	0	0	0
ROGO	2	305	0	0	1	28	6	21	333	2
SHANONO	0	0	0	0	0	0	0	0	0	0
SUMAILA	0	0	0	0	1	128	42	33	128	33
TAKAI	0	0	0	0	0	0	0	0	0	0
TARAUNI	0	0	0	0	48	4,909	2,781	57	4,909	57
TOFA	0	0	0	0	1	91	91	100	91	100
TSANYAWA	0	0	0	0	0	0	0	0	0	0
TUDUN WADA	1	116	0	0	2	41	33	80	157	21
UNGOGO	0	0	0	0	8	849	547	64	849	64
WARAWA	0	0	0	0	0	0	0	0	0	0
WUDIL	1	1,170	0	0	2	24	8	33	1,194	1
TOTAL	6	3,073	1,239	40	300	36,279	19,038	52	39,352	52

Excluding Rearticulated Senior Sec. Schools.

Table 3.19: Public and Private Senior secondary school enrolment by gender and LGA

LGA	Total			Aged 15-17		
	Students	Girls	% girls	Total	Female	% girls
AJINGI	0	0	0	0	0	0
ALBASU	0	0	0	0	0	0
BAGWAI	243	0	0	203	0	0
BEBEJI	125	125	100	125	125	100
BICHI	133	71	53	50	21	42
BUNKURE	0	0	0	0	0	0
DALA	2,714	1,937	71	1,905	1,347	71
DAMBATTA	5	3	60	5	3	60
DAWAKIN KUDU	191	134	70	144	106	74
DAWAKIN TOFA	0	0	0	0	0	0
DOGUWA	0	0	0	0	0	0
FAGGE	4,755	2,303	48	3,621	1,708	47
GABASAWA	0	0	0	0	0	0
GARKO	0	0	0	0	0	0
GARUN MALAN	0	0	0	0	0	0
GAYA	0	0	0	0	0	0
GEZAWA	0	0	0	0	0	0
GWALE	8,829	4,233	48	6,166	3,118	51
GWARZO	347	0	0	293	0	0
KABO	0	0	0	0	0	0
KANO MUNICIPAL	3,347	2,644	79	2,277	1,763	77
KARAYE	0	0	0	0	0	0
KIBIYA	298	133	45	298	133	45
KIRU	32	0	0	9	0	0
KUMBOTSO	3,961	1,836	46	3,017	1,381	46
KUNCHI	0	0	0	0	0	0
KURA	58	40	69	0	0	0
MADOBI	107	0	0	107	0	0
MAKODA	0	0	0	0	0	0
MINJIBIR	0	0	0	0	0	0
NASSARAWA	6,546	3,310	51	5,373	2,791	52
RANO	0	0	0	0	0	0
RIMIN GADO	0	0	0	0	0	0
ROGO	333	6	2	196	6	3
SHANONO	0	0	0	0	0	0
SUMAILA	128	42	33	48	26	54
TAKAI	0	0	0	0	0	0
TARAUNI	4,909	2,781	57	3,463	1,874	54
TOFA	91	91	100	35	35	0
TSANYAWA	0	0	0	0	0	0
TUDUN WADA	157	33	21	67	16	24
UNGOGO	849	547	64	573	390	68
WARAWA	0	0	0	0	0	0
WUDIL	1,194	8	1	672	6	1
TOTAL	39,352	20,277	52	28,647	14,849	52

Excluding Rearticulated Senior Secondary Schools.

Table 3.20: Enrolment of special needs children in public primary schools

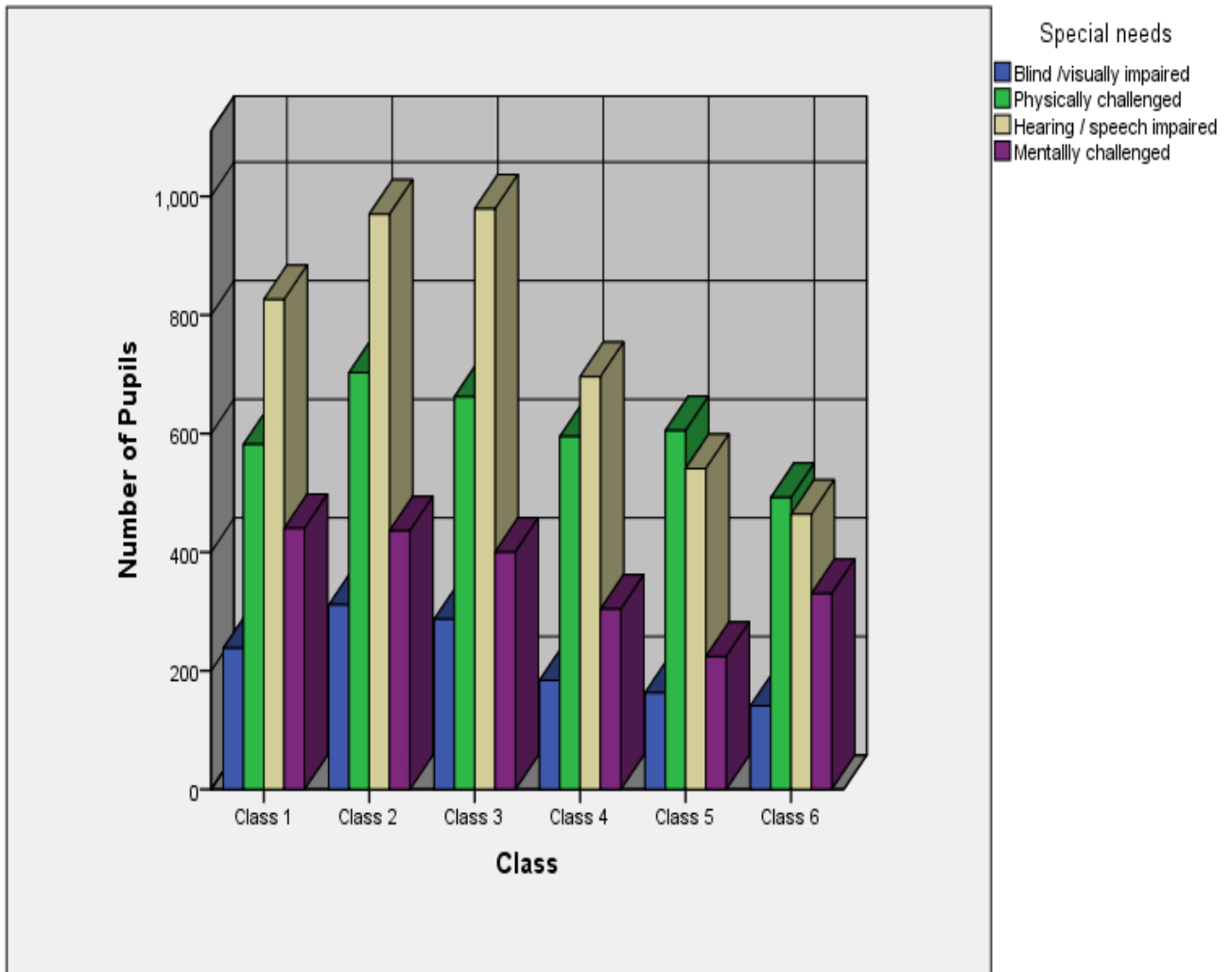
Type of disability	Class 1	Class 2	Class 3	Class 4	Class 5	Class 6
Blind /visually impaired	238	311	287	184	163	141
Physically challenged	582	703	662	595	605	492
Hearing / speech impaired	826	970	979	696	541	464
Mentally challenged	440	436	400	304	224	330
TOTAL *	2,086	2,420	2,328	1,779	1,533	1,427

Notes* Totals may include same student more than once if student has multiple disabilities

Table 3.21: Enrolment of special needs children in public secondary schools

Type of disability	JSS 1	JSS 2	JSS 3	SSS 1	SSS 2	SSS 3
Blind / visually impaired	58	104	84	66	53	60
Physically challenged	206	191	174	129	197	165
Hearing / speech impaired	158	145	129	119	111	145
Mentally challenged	311	419	51	34	25	19
TOTAL *	733	859	438	348	386	389

Notes* Totals may include same student more than once if student has multiple disabilities



Graph 3: Enrolment of Special Needs

Table 3.22: Repeaters in public primary schools by LGA, class and gender

LGA	Class 1		Class 2		Class 3		Class 4		Class 5		Class 6	
	Boys	Girls	Boys	Girls	Boys	Girls	Boys	Girls	Boys	Girls	Boys	Girls
AJINGI	7	5	24	23	27	27	50	45	51	35	23	46
ALBASU	48	32	30	23	20	23	13	15	23	15	39	61
BAGWAI	37	25	37	23	28	22	25	17	16	14	21	17
BEBEJI	44	30	52	28	13	21	15	11	26	16	8	16
BICHI	12	10	14	19	19	12	23	21	19	21	4	16
BUNKURE	16	22	42	29	26	28	17	21	13	15	13	6
DALA	217	235	171	159	108	105	111	127	89	106	66	101
DAMBATTA	0	0	3	2	2	0	18	13	2	3	2	3
DAWAKIN KUDU	62	70	75	62	49	51	36	36	21	20	20	18
DAWAKIN TOFA	2	3	6	6	8	12	9	10	8	17	2	2
DOGUWA	18	14	4	8	13	14	23	21	9	11	6	0
FAGGE	154	180	68	62	57	57	59	43	32	39	20	18
GABASAWA	7	8	9	11	11	9	8	5	9	12	9	3
GARKO	13	0	11	6	3	0	4	2	1	3	2	6
GARUN MALAN	6	7	34	29	27	27	19	22	24	25	0	0
GAYA	112	104	60	52	50	34	53	36	22	28	23	63
GEZAWA	6	14	10	7	2	3	20	16	4	3	10	5
GWALE	97	76	136	112	79	68	79	70	41	35	38	30
GWARZO	76	28	46	32	53	41	37	20	19	28	31	48
KABO	59	50	36	37	14	26	8	6	19	15	9	17
KANO MUNICIPAL	46	58	45	31	38	27	26	25	39	30	33	29
KARAYE	30	17	20	10	31	31	19	15	17	7	14	15
KIBIYA	3	4	8	9	2	5	12	4	3	3	5	2
KIRU	17	11	40	27	64	32	19	15	30	29	22	20
KUMBOTSO	165	168	88	80	99	98	72	45	67	57	46	39
KUNCHI	1	0	0	1	12	15	7	67	92	56	176	85
KURA	57	58	30	33	26	28	41	38	21	16	8	3
MADObI	31	16	35	35	29	29	39	23	29	18	30	16
MAKODA	0	0	0	0	0	0	0	1	1	0	9	2
MINJIBIR	30	11	8	10	3	2	5	0	0	43	8	62
NASSARAWA	176	196	119	150	89	85	83	89	47	77	59	90
RANO	16	25	16	18	17	10	12	3	5	6	6	3
RIMIN GADO	13	7	8	4	13	8	0	2	2	3	3	0
ROGO	81	58	78	82	81	58	47	51	38	50	59	113
SHANONO	22	22	16	16	6	14	3	1	4	3	9	3
SUMAILA	1	4	17	9	12	9	6	6	13	5	16	13
TAKAI	2	1	2	1	50	26	26	18	14	9	17	17
TARAUNI	95	108	66	51	59	70	63	71	40	50	23	14
TOFA	21	24	19	22	17	13	32	25	34	11	18	53
TSANYAWA	2	1	1	1	0	3	5	5	4	7	2	5
TUDUN WADA	84	85	106	83	70	71	61	54	63	53	32	12
UNGOGO	44	45	47	42	47	44	25	12	13	18	33	22
WARAWA	0	0	5	7	6	13	3	3	2	3	10	7
WUDIL	62	66	49	54	64	74	43	52	46	49	11	32
TOTAL	1,992	1,898	1,691	1,506	1,444	1,345	1,276	1,182	1,072	1,064	995	1,133

Table 3.23: Repeaters in public secondary schools by LGA, class and gender

LGA	JSS 1		JSS 2		JSS 3		SSS 1		SSS 2		SSS 3	
	Boys	Girls	Boys	Girls	Boys	Girls	Boys	Girls	Boys	Girls	Boys	Girls
AJINGI	0	0	0	0	0	0	0	0	0	0	0	0
ALBASU	0	0	0	0	0	0	0	0	0	0	0	0
BAGWAI	0	0	0	0	0	0	0	0	0	0	0	0
BEBEJI	0	0	0	0	0	0	0	0	0	0	0	0
BICHI	0	0	0	0	0	0	0	0	0	0	0	0
BUNKURE	0	0	0	0	0	0	0	0	0	0	0	0
DALA	0	0	0	0	0	0	0	0	0	0	0	0
DAMBATTA	0	0	0	0	0	0	0	0	0	0	0	0
DAWAKIN KUDU	0	0	0	0	0	0	0	0	0	0	0	0
DAWAKIN TOFA	0	0	0	0	0	0	0	0	0	0	0	0
DOGUWA	0	0	0	0	0	0	0	0	0	0	0	0
FAGGE	0	0	0	0	0	0	0	0	0	0	0	0
GABASAWA	0	0	0	0	0	0	0	0	0	0	0	0
GARKO	0	0	0	0	0	0	0	0	0	0	0	0
GARUN MALAN	0	0	0	0	0	0	0	0	0	0	0	0
GAYA	0	0	0	0	0	0	0	0	0	0	0	0
GEZAWA	0	0	0	0	0	0	0	0	0	0	0	0
GWALE	0	0	0	0	0	0	0	0	0	0	0	0
GWARZO	0	0	0	0	0	0	0	0	0	0	0	0
KABO	0	0	0	0	0	0	0	0	0	0	0	0
KANO MUNICIPAL	0	0	0	0	0	0	0	0	0	0	0	0
KARAYE	0	0	0	0	0	0	0	0	0	0	0	0
KIBIYA	0	0	0	0	0	0	0	0	0	0	0	0
KIRU	0	0	0	0	0	0	0	0	0	0	0	0
KUMBOTSO	0	0	0	0	0	0	0	0	0	0	0	0
KUNCHI	0	0	0	0	0	0	0	0	0	0	0	0
KURA	0	0	0	0	0	0	0	0	0	0	0	0
MADOBI	0	0	0	0	0	0	0	0	0	0	0	0
MAKODA	0	0	0	0	0	0	0	0	0	0	0	0
MINJIBIR	0	0	0	0	0	0	0	0	0	0	0	0
NASSARAWA	0	0	0	0	0	0	0	0	0	0	0	0
RANO	0	0	0	0	0	0	0	0	0	0	0	0
RIMIN GADO	0	0	0	0	0	0	0	0	0	0	0	0
ROGO	0	0	0	0	0	0	0	0	0	0	2	0
SHANONO	0	0	0	0	0	0	0	0	0	0	0	0
SUMAILA	0	0	0	0	0	0	0	0	0	0	0	0
TAKAI	0	0	0	0	0	0	0	0	0	0	0	0
TARAUNI	0	0	0	0	0	0	0	0	0	0	0	0
TOFA	0	0	0	0	0	0	0	0	0	0	0	0
TSANYAWA	0	0	0	0	0	0	0	0	0	0	0	0
TUDUN WADA	0	0	0	0	0	0	0	0	0	0	0	0
UNGOGO	0	0	0	0	0	0	0	0	0	0	0	0
WARAWA	0	0	0	0	0	0	0	0	0	0	0	0
WUDIL	0	0	0	0	0	0	0	0	0	0	3	0
TOTAL	0	0	0	0	0	0	0	0	0	0	5	0

Table 3.24: Repeaters in public Rearticulated secondary schools by LGA, class and gender

LGA	JSS 1		JSS 2		JSS 3		SSS 1		SSS 2		SSS 3	
	Boys	Girls	Boys	Girls	Boys	Girls	Boys	Girls	Boys	Girls	Boys	Girls
AJINGI	0	0	2	0	2	1	1	0	0	0	22	0
ALBASU	10	3	4	0	5	0	0	0	0	0	89	0
BAGWAI	0	0	5	0	2	0	0	0	7	0	7	0
BEBEJI	1	5	7	0	11	0	3	0	24	3	16	0
BICHI	2	0	4	1	4	0	6	12	10	8	16	12
BUNKURE	13	0	7	0	10	0	5	0	12	0	9	0
DALA	3	0	8	6	0	2	4	0	0	6	2	3
DAMBATTA	0	5	0	2	0	2	7	1	5	0	3	0
DAWAKIN KUDU	0	0	0	0	12	0	19	0	4	0	5	0
DAWAKIN TOFA	22	0	3	0	20	3	20	0	7	0	0	0
DOGUWA	0	0	0	0	0	0	0	0	1	0	0	0
FAGGE	12	6	31	11	14	7	12	7	54	6	6	1
GABASAWA	0	0	3	0	7	0	5	0	20	0	0	0
GARKO	4	0	2	0	3	0	6	4	1	0	20	0
GARUN MALAN	1	0	2	1	3	0	0	0	1	0	0	0
GAYA	0	3	3	3	0	1	1	5	0	0	0	0
GEZAWA	1	17	5	23	9	5	10	15	11	2	13	0
GWALE	10	0	21	0	36	0	5	2	7	10	0	20
GWARZO	0	3	7	3	12	0	6	2	18	5	13	0
KABO	0	0	3	1	7	0	2	0	16	0	5	0
KANO MUNICIPAL	28	2	48	0	39	0	85	2	89	4	15	19
KARAYE	0	4	6	6	5	0	9	2	11	2	6	6
KIBIYA	0	0	0	0	2	0	0	0	0	0	0	0
KIRU	10	0	3	4	3	4	2	4	2	0	4	0
KUMBOTSO	17	2	14	0	12	1	42	4	22	23	36	0
KUNCHI	0	0	1	0	1	0	0	0	0	0	0	0
KURA	0	0	37	0	31	4	0	0	1	0	0	0
MADObI	3	6	0	5	0	2	0	1	2	1	1	0
MAKODA	0	0	1	0	3	0	4	0	23	0	30	0
MINJIBIR	0	0	1	0	1	0	1	0	2	0	0	0
NASSARAWA	34	0	0	0	2	0	0	0	2	0	0	0
RANO	0	1	9	0	13	0	0	0	13	3	10	6
RIMIN GADO	0	0	15	0	20	0	0	0	28	0	37	0
ROGO	13	0	28	2	24	3	27	0	15	1	3	0
SHANONO	5	0	7	0	5	0	11	0	0	0	15	0
SUMAILA	14	0	18	0	5	0	0	1	1	5	1	0
TAKAI	0	0	13	9	8	5	6	14	28	8	1	0
TARAUNI	0	5	2	5	2	3	4	0	14	6	4	5
TOFA	0	0	0	0	0	0	42	0	0	0	0	0
TSANYAWA	0	0	0	120	0	110	0	81	5	60	0	30
TUDUN WADA	2	2	6	3	8	2	0	5	7	0	12	2
UNGOGO	0	0	12	0	20	0	2	0	0	0	0	0
WARAWA	0	0	0	0	0	0	0	0	5	0	6	0
WUDIL	23	0	20	3	27	3	2	3	40	2	67	3
TOTAL	228	64	358	208	388	158	349	165	508	155	474	107

4. Teachers

Teachers 4.1: Number of Pre-primary school teachers by gender and LGA

LGA	All teachers				Public Qualified teachers		
	Male	Female	Total	% Female	Total	% Qualified	% Female
AJINGI	1	1	2	50	0	0	0
ALBASU	5	3	8	38	1	13	0
BAGWAI	9	0	9	0	4	44	0
BEBEJI	19	5	24	21	20	83	25
BICHI	2	2	4	50	3	75	67
BUNKURE	8	3	11	27	4	36	0
DALA	4	19	23	83	15	65	93
DAMBATTA	11	28	39	72	12	31	83
DAWAKIN KUDU	12	8	20	40	13	65	54
DAWAKIN TOFA	5	13	18	72	12	67	75
DOGUWA	8	4	12	33	6	50	50
FAGGE	2	12	14	86	8	57	88
GABASAWA	12	3	15	20	12	80	25
GARKO	5	1	6	17	3	50	0
GARUN MALAN	7	6	13	46	5	38	20
GAYA	1	1	2	50	1	50	100
GEZAWA	13	2	15	13	4	27	25
GWALE	15	42	57	74	34	60	71
GWARZO	5	3	8	38	7	88	43
KABO	0	0	0	0	0	0	0
KANO MUNICIPAL	18	27	45	60	25	56	76
KARAYE	10	1	11	9	1	9	0
KIBIYA	0	1	1	100	0	0	0
KIRU	0	2	2	100	0	0	0
KUMBOTSO	7	31	38	82	18	47	94
KUNCHI	1	0	1	0	0	0	0
KURA	0	0	0	0	0	0	0
MADOBI	5	2	7	29	3	43	33
MAKODA	4	9	13	69	4	31	100
MINJIBIR	16	13	29	45	13	45	46
NASSARAWA	25	39	64	61	20	31	75
RANO	1	8	9	89	6	67	83
RIMIN GADO	0	3	3	100	3	100	100
ROGO	3	1	4	25	2	50	0
SHANONO	3	1	4	25	2	50	0
SUMAILA	1	0	1	0	0	0	0
TAKAI	0	0	0	0	0	0	0
TARAUNI	3	11	14	79	10	71	90
TOFA	1	3	4	75	3	75	100
TSANYAWA	8	2	10	20	3	30	0
TUDUN WADA	14	5	19	26	6	32	17
UNGOGO	12	18	30	60	12	40	75
WARAWA	8	5	13	38	5	38	80
WUDIL	13	9	22	41	11	50	45
TOTAL	297	347	644	54	311	48	61

Table 4.2: Number of primary school teachers by gender and LGA

LGA	All teachers				Public Qualified teachers		
	Male	Female	Total	% Female	Total	% Qualified	% Female
AJINGI	628	34	662	5	222	34	1
ALBASU	803	52	855	6	308	36	6
BAGWAI	716	37	753	5	411	55	4
BEBEJI	706	58	764	8	403	53	9
BICHI	1,030	229	1,259	18	557	44	32
BUNKURE	806	32	838	4	349	42	2
DALA	1,364	660	2,024	33	930	46	71
DAMBATTA	1,150	165	1,315	13	483	37	16
DAWAKIN KUDU	1,097	161	1,258	13	664	53	16
DAWAKIN TOFA	842	102	944	11	550	58	14
DOGUWA	727	89	816	11	366	45	13
FAGGE	1,077	759	1,836	41	1,059	58	83
GABASAWA	1,096	97	1,193	8	477	40	10
GARKO	676	62	738	8	267	36	9
GARUN MALAN	643	64	707	9	257	36	8
GAYA	1,005	47	1,052	4	371	35	8
GEZAWA	1,188	231	1,419	16	588	41	22
GWALE	1,512	1,197	2,709	44	1,252	46	101
GWARZO	1,288	78	1,366	6	708	52	8
KABO	1,123	63	1,186	5	280	24	7
KANO MUNICIPAL	1,279	1,130	2,409	47	1,346	56	114
KARAYE	743	41	784	5	233	30	8
KIBIYA	514	125	639	20	150	23	11
KIRU	777	55	832	7	317	38	6
KUMBOTSO	1,298	922	2,220	42	1,242	56	79
KUNCHI	670	63	733	9	314	43	10
KURA	586	109	695	16	312	45	11
MADObI	595	54	649	8	279	43	13
MAKODA	576	59	635	9	234	37	11
MINJIBIR	1,189	102	1,291	8	577	45	10
NASSARAWA	1,399	1,187	2,586	46	1,291	50	86
RANO	718	78	796	10	353	44	9
RIMIN GADO	781	82	863	10	255	30	16
ROGO	770	53	823	6	444	54	6
SHANONO	939	52	991	5	375	38	3
SUMAILA	603	73	676	11	261	39	12
TAKAI	654	83	737	11	206	28	14
TARAUNI	1,215	819	2,034	40	1,185	58	89
TOFA	658	62	720	9	406	56	12
TSANYAWA	780	50	830	6	310	37	7
TUDUN WADA	1,393	126	1,519	8	593	39	8
UNGOGO	1,491	534	2,025	26	893	44	45
WARAWA	816	104	920	11	391	43	22
WUDIL	992	154	1,146	13	517	45	17
TOTAL	40,913	10,334	51,247	20	22,986	45	24

Qualified to exclude Grade 2 in line with Federal Policy

Table 4.3: Pupil-teacher ratio by LGA, public primary schools

LGA	Public	
	All teachers	Qualified teachers
AJINGI	48	143
ALBASU	39	107
BAGWAI	31	56
BEBEJI	53	101
BICHI	62	141
BUNKURE	56	135
DALA	59	128
DAMBATTA	30	82
DAWAKIN KUDU	62	118
DAWAKIN TOFA	42	72
DOGUWA	53	119
FAGGE	48	83
GABASAWA	32	81
GARKO	41	114
GARUN MALAN	45	125
GAYA	43	123
GEZAWA	52	126
GWALE	39	83
GWARZO	41	78
KABO	40	168
KANO MUNICIPAL	32	57
KARAYE	68	229
KIBIYA	35	147
KIRU	75	196
KUMBOTSO	54	96
KUNCHI	39	92
KURA	63	141
MADOBI	63	146
MAKODA	36	98
MINJIBIR	50	112
NASSARAWA	52	104
RANO	45	101
RIMIN GADO	43	146
ROGO	92	171
SHANONO	41	108
SUMAILA	51	132
TAKAI	58	207
TARAUNI	42	71
TOFA	46	82
TSANYAWA	54	146
TUDUN WADA	45	115
UNGOGO	63	142
WARAWA	39	92
WUDIL	48	106
TOTAL	48	108

Qualified to exclude Grade 2 in line with Federal Policy

Table 4.4: Number of public junior secondary school teachers by gender and LGA

LGA	All teachers				Public Qualified teachers		
	Male	Female	Total	% Female	Total	% Qualified	% Female
AJINGI	28	1	29	3	24	83	4
ALBASU	11	0	11	0	8	73	0
BAGWAI	58	5	63	8	57	90	7
BEBEJI	76	1	77	1	59	77	2
BICHI	115	21	136	15	117	86	17
BUNKURE	42	1	43	2	34	79	0
DALA	84	27	111	24	83	75	24
DAMBATTA	45	1	46	2	39	85	3
DAWAKIN KUDU	53	3	56	5	55	98	5
DAWAKIN TOFA	60	5	65	8	46	71	9
DOGUWA	52	4	56	7	44	79	7
FAGGE	83	29	112	26	76	68	34
GABASAWA	58	0	58	0	41	71	0
GARKO	61	3	64	5	53	83	4
GARUN MALAN	20	7	27	26	11	41	27
GAYA	21	2	23	9	21	91	10
GEZAWA	69	2	71	3	61	86	2
GWALE	48	34	82	41	54	66	39
GWARZO	59	1	60	2	57	95	2
KABO	35	1	36	3	34	94	3
KANO MUNICIPAL	184	131	315	42	256	81	41
KARAYE	71	0	71	0	53	75	0
KIBIYA	20	2	22	9	13	59	0
KIRU	61	3	64	5	54	84	4
KUMBOTSO	57	16	73	22	63	86	25
KUNCHI	43	3	46	7	37	80	3
KURA	8	7	15	47	13	87	46
MADObI	27	9	36	25	25	69	28
MAKODA	21	0	21	0	13	62	0
MINJIBIR	101	1	102	1	88	86	0
NASSARAWA	153	95	248	38	179	72	39
RANO	26	3	29	10	23	79	9
RIMIN GADO	58	5	63	8	46	73	11
ROGO	87	4	91	4	75	82	5
SHANONO	50	0	50	0	38	76	0
SUMAILA	44	3	47	6	41	87	5
TAKAI	33	3	36	8	24	67	8
TARAUNI	37	41	78	53	64	82	48
TOFA	37	4	41	10	35	85	11
TSANYAWA	54	6	60	10	46	77	7
TUDUN WADA	82	5	87	6	70	80	7
UNGOGO	68	19	87	22	66	76	23
WARAWA	44	0	44	0	37	84	0
WUDIL	36	2	38	5	29	76	7
TOTAL	2,480	510	2,990	17	2,362	79	17

Table 4.5: Public Pupil-teacher ratio by type and LGA, junior secondary schools

LGA	Public	
	All teachers	Qualified teachers
AJINGI	21	25
ALBASU	17	24
BAGWAI	12	13
BEBEJI	23	30
BICHI	25	29
BUNKURE	16	20
DALA	37	49
DAMBATTA	16	19
DAWAKIN KUDU	28	28
DAWAKIN TOFA	25	36
DOGUWA	17	21
FAGGE	39	58
GABASAWA	18	26
GARKO	20	24
GARUN MALAN	21	51
GAYA	13	15
GEZAWA	34	39
GWALE	31	47
GWARZO	34	36
KABO	28	29
KANO MUNICIPAL	24	30
KARAYE	23	30
KIBIYA	18	30
KIRU	29	34
KUMBOTSO	30	35
KUNCHI	15	18
KURA	33	38
MADOBI	25	36
MAKODA	15	24
MINJIBIR	29	34
NASSARAWA	33	45
RANO	19	24
RIMIN GADO	15	21
ROGO	28	35
SHANONO	12	16
SUMAILA	16	18
TAKAI	27	41
TARAUNI	25	30
TOFA	21	24
TSANYAWA	24	31
TUDUN WADA	16	20
UNGOGO	47	62
WARAWA	19	22
WUDIL	19	25
TOTAL	26	32

Qualified to excluding Grade 2 in line with Federal Policy

Table 4.6: Number of public rearticulated secondary school teachers by gender and LGA

LGA	All teachers				Public Qualified teachers		
	Male	Female	Total	% Female	Total	% Qualified	% Female
AJINGI	100	3	103	3	88	85	2
ALBASU	163	12	175	7	140	80	7
BAGWAI	91	2	93	2	76	82	1
BEBEJI	213	9	222	4	186	84	5
BICHI	221	30	251	12	215	86	13
BUNKURE	121	2	123	2	95	77	0
DALA	353	187	540	35	391	72	37
DAMBATTA	297	35	332	11	281	85	10
DAWAKIN KUDU	240	51	291	18	239	82	17
DAWAKIN TOFA	203	37	240	15	205	85	14
DOGUWA	119	2	121	2	97	80	2
FAGGE	506	194	700	28	577	82	29
GABASAWA	97	8	105	8	90	86	6
GARKO	110	9	119	8	91	76	7
GARUN MALAN	146	12	158	8	132	84	5
GAYA	220	10	230	4	170	74	5
GEZAWA	228	47	275	17	223	81	18
GWALE	435	480	915	52	696	76	53
GWARZO	281	9	290	3	251	87	3
KABO	136	11	147	7	98	67	6
KANO MUNICIPAL	440	374	814	46	648	80	46
KARAYE	168	13	181	7	156	86	8
KIBIYA	58	4	62	6	46	74	0
KIRU	142	12	154	8	128	83	5
KUMBOTSO	241	165	406	41	349	86	41
KUNCHI	34	3	37	8	32	86	9
KURA	291	32	323	10	237	73	10
MADOBI	169	9	178	5	132	74	5
MAKODA	67	10	77	13	60	78	17
MINJIBIR	111	6	117	5	95	81	4
NASSARAWA	31	16	47	34	38	81	29
RANO	198	19	217	9	175	81	9
RIMIN GADO	71	5	76	7	58	76	9
ROGO	193	10	203	5	163	80	4
SHANONO	99	3	102	3	86	84	2
SUMAILA	151	13	164	8	129	79	8
TAKAI	176	13	189	7	139	74	9
TARAUNI	184	229	413	55	348	84	55
TOFA	107	18	125	14	91	73	14
TSANYAWA	63	0	63	0	56	89	0
TUDUN WADA	241	19	260	7	218	84	6
UNGOGO	279	87	366	24	269	73	24
WARAWA	52	3	55	5	47	85	6
WUDIL	150	10	160	6	115	72	6
TOTAL	7,996	2,223	10,219	22	8,156	80	22

Qualified to exclude Grade 2 in line with Federal Policy

Table 4.7 Public Pupil-teacher ratio by type and LGA, Rearticulated secondary schools

LGA	Public	
	All teachers	Qualified teachers
AJINGI	30	35
ALBASU	34	42
BAGWAI	36	44
BEBEJI	34	41
BICHI	42	49
BUNKURE	42	55
DALA	44	60
DAMBATTA	35	42
DAWAKIN KUDU	43	53
DAWAKIN TOFA	40	47
DOGUWA	30	37
FAGGE	50	61
GABASAWA	45	52
GARKO	43	56
GARUN MALAN	26	31
GAYA	35	48
GEZAWA	47	59
GWALE	38	50
GWARZO	37	43
KABO	40	60
KANO MUNICIPAL	38	47
KARAYE	30	35
KIBIYA	35	47
KIRU	58	70
KUMBOTSO	70	82
KUNCHI	43	49
KURA	29	40
MADOBI	48	65
MAKODA	34	44
MINJIBIR	36	44
NASSARAWA	46	57
RANO	35	43
RIMIN GADO	34	45
ROGO	33	41
SHANONO	31	37
SUMAILA	45	57
TAKAI	36	49
TARAUNI	36	43
TOFA	34	47
TSANYAWA	53	60
TUDUN WADA	33	40
UNGOGO	43	59
WARAWA	27	31
WUDIL	54	75
TOTAL	41	51

Qualified to exclude Grade 2 in line with Federal Policy

Table 4.8: Number of public senior secondary school teachers by gender and LGA

LGA	All teachers				Public Qualified teachers		
	Male	Female	Total	% Female	Total	% Qualified	% Female
AJINGI	0	0	0	0	0	0	0
ALBASU	0	0	0	0	0	0	0
BAGWAI	0	0	0	0	0	0	0
BEBEJI	0	0	0	0	0	0	0
BICHI	0	0	0	0	0	0	0
BUNKURE	0	0	0	0	0	0	0
DALA	0	0	0	0	0	0	0
DAMBATTA	0	0	0	0	0	0	0
DAWAKIN KUDU	0	0	0	0	0	0	0
DAWAKIN TOFA	0	0	0	0	0	0	0
DOGUWA	0	0	0	0	0	0	0
FAGGE	0	0	0	0	0	0	0
GABASAWA	0	0	0	0	0	0	0
GARKO	0	0	0	0	0	0	0
GARUN MALAN	0	0	0	0	0	0	0
GAYA	0	0	0	0	0	0	0
GEZAWA	0	0	0	0	0	0	0
GWALE	0	0	0	0	0	0	0
GWARZO	0	0	0	0	0	0	0
KABO	0	0	0	0	0	0	0
KANO MUNICIPAL	23	14	37	38	20	54	35
KARAYE	0	0	0	0	0	0	0
KIBIYA	0	0	0	0	0	0	0
KIRU	0	0	0	0	0	0	0
KUMBOTSO	0	0	0	0	0	0	0
KUNCHI	0	0	0	0	0	0	0
KURA	0	0	0	0	0	0	0
MADObI	0	0	0	0	0	0	0
MAKODA	0	0	0	0	0	0	0
MINJIBIR	0	0	0	0	0	0	0
NASSARAWA	0	0	0	0	0	0	0
RANO	0	0	0	0	0	0	0
RIMIN GADO	0	0	0	0	0	0	0
ROGO	13	0	13	0	11	85	0
SHANONO	0	0	0	0	0	0	0
SUMAILA	0	0	0	0	0	0	0
TAKAI	0	0	0	0	0	0	0
TARAUNI	0	0	0	0	0	0	0
TOFA	0	0	0	0	0	0	0
TSANYAWA	0	0	0	0	0	0	0
TUDUN WADA	6	0	6	0	6	100	0
UNGOGO	0	0	0	0	0	0	0
WARAWA	0	0	0	0	0	0	0
WUDIL	31	6	37	16	35	95	17
TOTAL	73	20	93	22	72	77	18

Qualified to exclude Grade 2 in line with Federal Policy

Table 4.9: Pupil-teacher ratio by type and LGA, public senior secondary schools

LGA	Public	
	All teachers	Qualified teachers
AJINGI	0	0
ALBASU	0	0
BAGWAI	0	0
BEBEJI	0	0
BICHI	0	0
BUNKURE	0	0
DALA	0	0
DAMBATTA	0	0
DAWAKIN KUDU	0	0
DAWAKIN TOFA	0	0
DOGUWA	0	0
FAGGE	0	0
GABASAWA	0	0
GARKO	0	0
GARUN MALAN	0	0
GAYA	0	0
GEZAWA	0	0
GWALE	0	0
GWARZO	0	0
KABO	0	0
KANO MUNICIPAL	33	62
KARAYE	0	0
KIBIYA	0	0
KIRU	0	0
KUMBOTSO	0	0
KUNCHI	0	0
KURA	0	0
MADOBI	0	0
MAKODA	0	0
MINJIBIR	0	0
NASSARAWA	0	0
RANO	0	0
RIMIN GADO	0	0
ROGO	23	28
SHANONO	0	0
SUMAILA	0	0
TAKAI	0	0
TARAUNI	0	0
TOFA	0	0
TSANYAWA	0	0
TUDUN WADA	19	19
UNGOGO	0	0
WARAWA	0	0
WUDIL	32	33
TOTAL	33	43

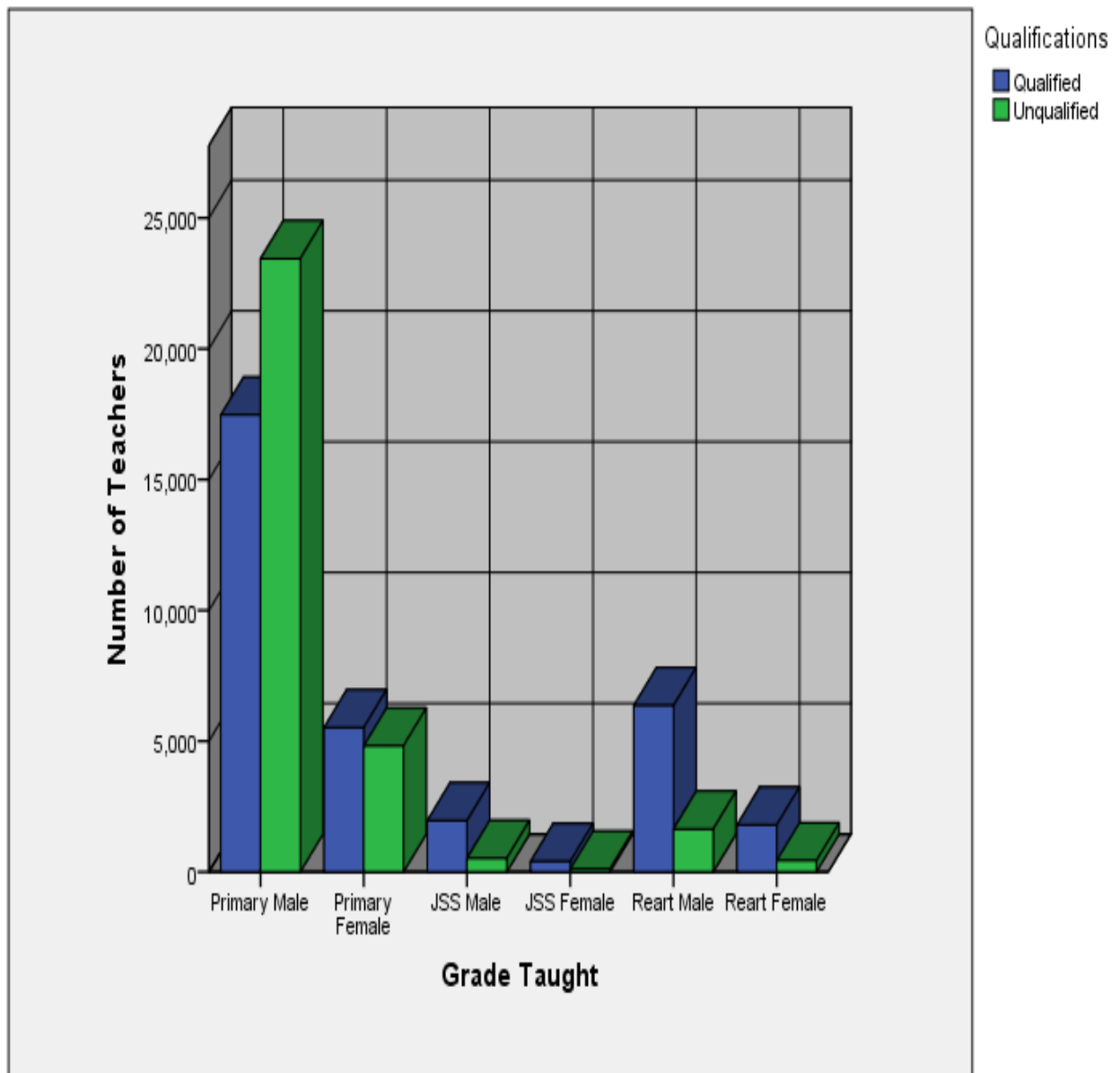
Qualified to exclude Grade 2 in line with Federal Policy

Table 4.10: Number of private school teachers by gender and LGA, (All Levels)

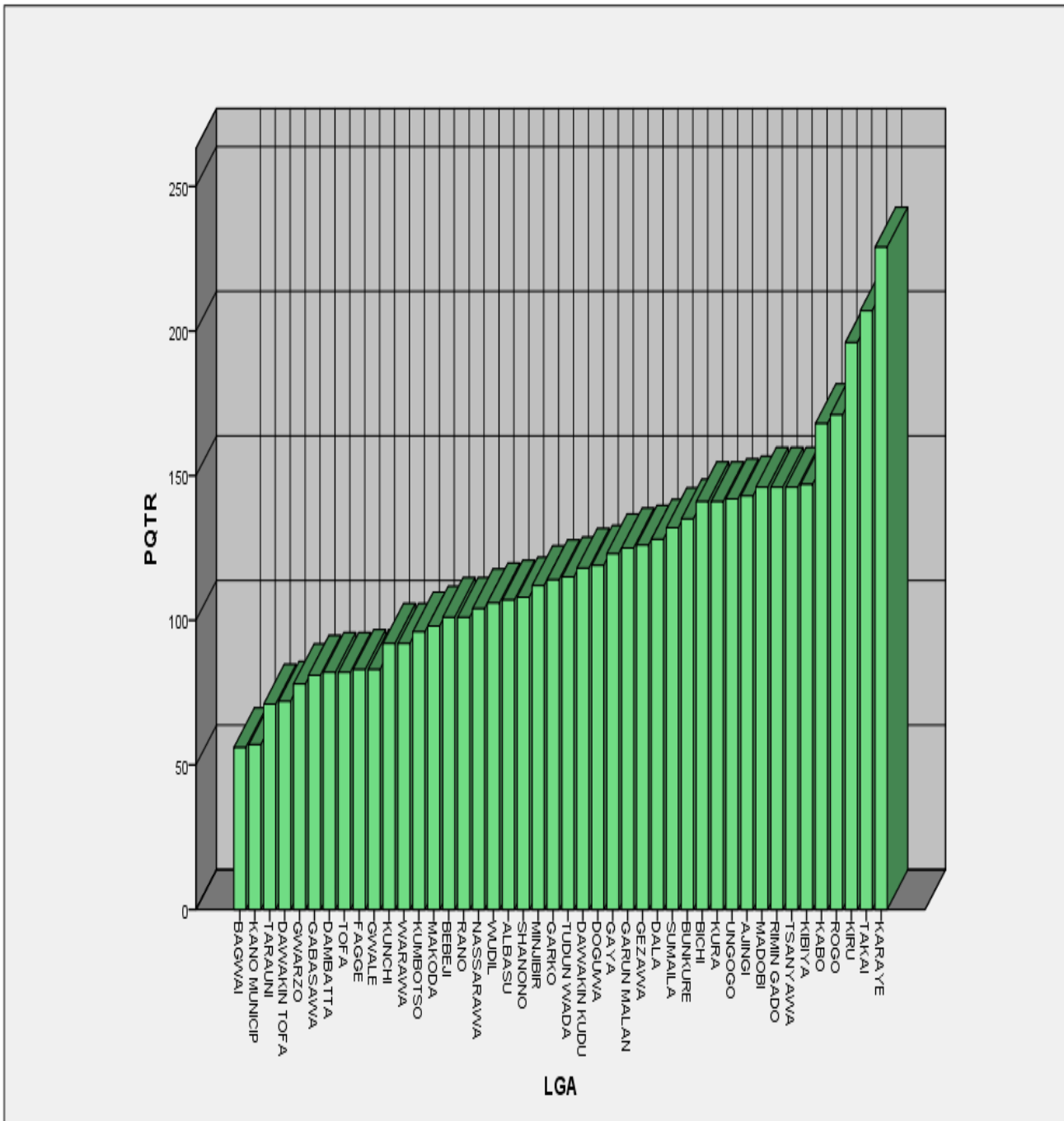
LGA	All teachers (Private)				Qualified teachers (Private)		
	Male	Female	Total	% Female	Total	% Qualified	% Female
AJINGI	4	1	5	20	0	0	0
ALBASU	0	0	0	0	0	0	0
BAGWAI	0	0	0	0	0	0	0
BEBEJI	37	32	69	46	44	64	43
BICHI	79	68	147	46	122	83	47
BUNKURE	17	4	21	19	11	52	18
DALA	462	339	801	42	461	58	43
DAMBATTA	48	42	90	47	33	37	27
DAWAKIN KUDU	53	35	88	40	60	68	33
DAWAKIN TOFA	90	23	113	20	23	20	4
DOGUWA	28	16	44	36	17	39	35
FAGGE	913	976	1,889	52	1,432	76	53
GABASAWA	2	1	3	33	1	33	0
GARKO	8	4	12	33	3	25	0
GARUN MALAN	10	3	13	23	3	23	33
GAYA	0	0	0	0	0	0	0
GEZAWA	0	0	0	0	0	0	0
GWALE	1,100	846	1,946	43	1,296	67	43
GWARZO	64	22	86	26	49	57	16
KABO	5	6	11	55	2	18	50
KANO MUNICIPAL	714	570	1284	44	704	55	48
KARAYE	20	3	23	13	4	17	25
KIBIYA	63	32	95	34	41	43	12
KIRU	48	27	75	36	33	44	33
KUMBOTSO	1,045	1,021	2,066	49	1,430	69	46
KUNCHI	0	0	0	0	0	0	0
KURA	75	39	114	34	38	33	26
MADObI	43	16	59	27	22	37	5
MAKODA	0	0	0	0	0	0	0
MINJIBIR	54	19	73	26	25	34	32
NASSARAWA	1,520	1,521	3,041	50	1,887	62	48
RANO	13	4	17	24	6	35	33
RIMIN GADO	4	3	7	43	3	43	0
ROGO	29	10	39	26	18	46	28
SHANONO	3	3	6	50	5	83	60
SUMAILA	39	11	50	22	36	72	31
TAKAI	19	6	25	24	9	36	22
TARAUNI	1,353	1,360	2,713	50	1,868	69	50
TOFA	53	14	67	21	26	39	54
TSANYAWA	0	0	0	0	0	0	0
TUDUN WADA	44	7	51	14	35	69	14
UNGOGO	236	162	398	41	211	53	38
WARAWA	0	0	0	0	0	0	0
WUDIL	34	46	80	58	43	54	51
TOTAL	8,329	7,292	15,621	47	10,001	64	47

Table 4.11: Pupil-teacher ratio in private schools by LGA, (All Levels)

LGA	Private	
	All teachers	Qualified teachers
AJINGI	42	0
ALBASU	0	0
BAGWAI	0	0
BEBEJI	16	26
BICHI	16	19
BUNKURE	24	46
DALA	19	33
DAMBATTA	18	49
DAWAKIN KUDU	23	34
DAWAKIN TOFA	37	184
DOGUWA	27	70
FAGGE	13	17
GABASAWA	21	62
GARKO	12	49
GARUN MALAN	26	114
GAYA	0	0
GEZAWA	0	0
GWALE	21	32
GWARZO	20	36
KABO	29	159
KANO MUNICIPAL	19	36
KARAYE	18	102
KIBIYA	15	34
KIRU	13	30
KUMBOTSO	14	21
KUNCHI	0	0
KURA	17	52
MADOBI	7	18
MAKODA	0	0
MINJIBIR	20	57
NASSARAWA	14	22
RANO	20	58
RIMIN GADO	18	43
ROGO	25	54
SHANONO	14	17
SUMAILA	16	23
TAKAI	22	60
TARAUNI	19	27
TOFA	11	29
TSANYAWA	0	0
TUDUN WADA	13	19
UNGOGO	15	27
WARAWA	0	0
WUDIL	15	27
TOTAL	17	26



Graph 4 Kano State: Public Schools Teachers by Gender and Qualification



Graph 5 Kano State: Ranked Pupil /Qualified Teacher Ratio (Primary) by LGA

Table 4.12: Percentage of long-term absent teachers (Public Only)

Percentage of long-term absent teachers on:	Primary		Junior secondary		Senior secondary		Rearticulated Secondary schools	
	Urban %	Rural %	Urban %	Rural %	Urban %	Rural %	Urban %	Rural %
Present	98.2	96.7	97.2	97.5	100.0	100.0	96.1	97.3
Maternity Leave	0.9	0.8	0.6	0.3	0.0	0.0	1.4	0.3
Sick Leave	0.3	0.5	0.2	0.7	0.0	0.0	0.3	0.5
Training	0.5	1.8	1.9	1.2	0.0	0.0	1.5	1.5
Unauthorised	0.1	0.1	0.1	0.4	0.0	0.0	0.6	0.5
TOTAL	100.0	100.0	100.0	100.0	100.0	100.0	100.0	100.0

Table 4.13: Percentage of teachers by highest level of education attained (Public Only)

Percentage of teachers by highest level of education attained:	Primary		Junior secondary		Senior secondary		Reart. Secondary	
	Urban %	Rural %	Urban %	Rural %	Urban %	Rural %	Urban %	Rural %
Below SSCE	3.1	4.4	1.6	1.8	0.0	1.8	2.9	1.8
SSCE / WASC	20.8	29.9	0.7	2.7	0.0	1.8	1.3	1.0
OND / Diploma	28.9	25.5	28.6	21.3	10.8	5.4	18.4	16.2
NCE	40.0	35.8	44.4	54.0	21.6	35.7	33.6	47.5
Degree / HND / Graduate	6.4	3.8	23.9	19.3	67.6	53.6	42.3	32.4
PhD/Masters degree	0.8	0.7	0.8	0.8	0.0	1.8	1.5	1.0
TOTAL	100.0	100.0	100.0	100.0	100.0	100.0	100.0	100.0

Table 4.14: Percentage of teachers by source of salary (Public Only)

Percentage of teachers by source of salary:	Primary		Junior secondary		Senior secondary		Rearticulated	
	Urban %	Rural %	Urban %	Rural %	Urban %	Rural %	Urban %	Rural %
Federal Government: FTS	1.9	1.0	0.5	0.7	0.0	0.0	0.0	0.5
State Government – on the school's payroll	51.9	60.4	50.4	36.1	70.3	67.9	62.1	56.2
State Government – on another school's payroll	16.9	32.8	40.1	54.7	27.0	14.3	33.3	35.6
Other, for example PTA or community	28.0	2.2	5.1	5.5	0.0	0.0	2.6	3.5
No salary, for example volunteer or NYSC	1.3	3.6	4.1	2.9	2.7	17.9	2.0	4.2
TOTAL	100.0	100.0	100.0	100.0	100.0	100.0	100.0	100.0

5. Facilities

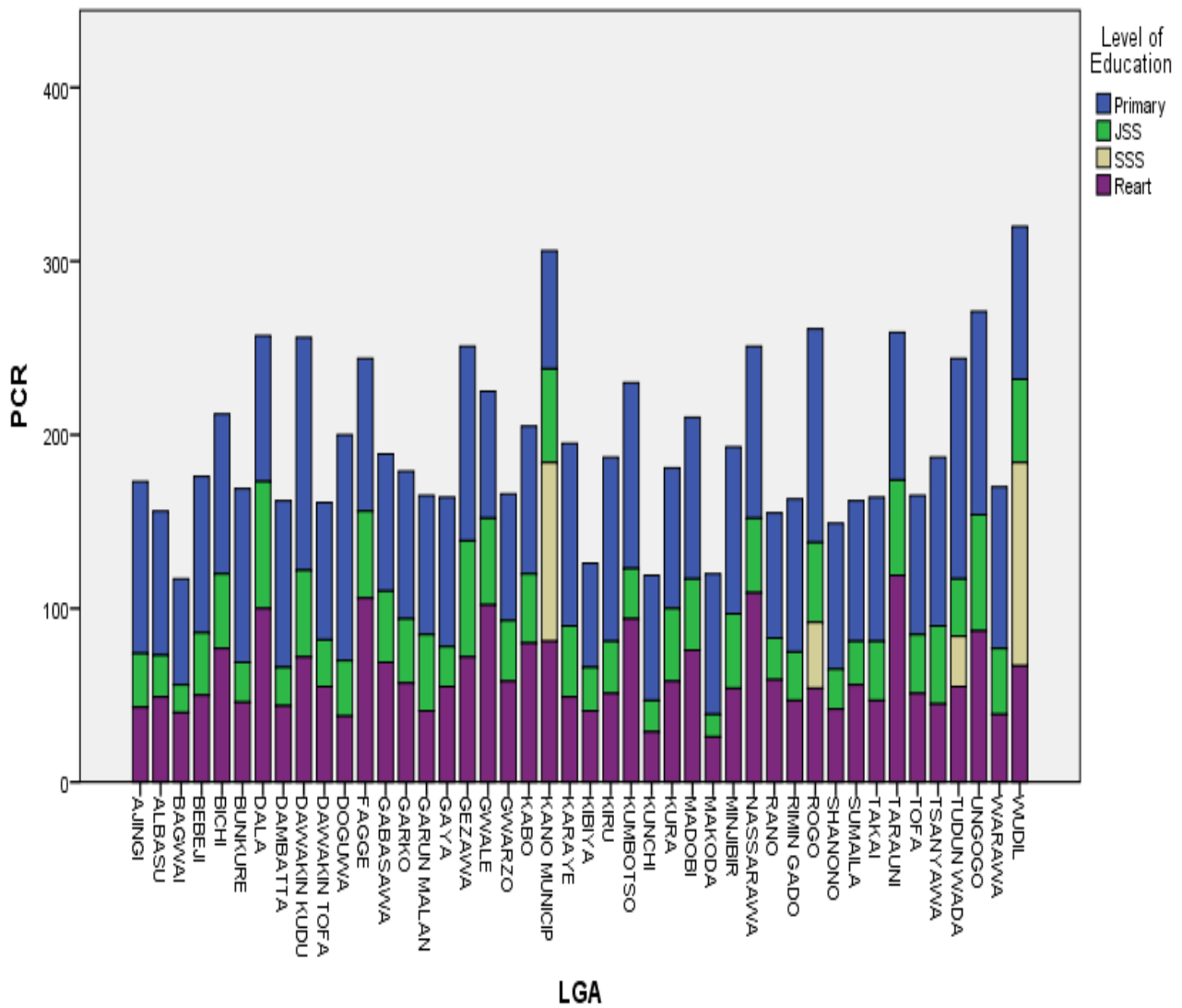
Table 5.1: Number of classrooms by school type and LGA

LGA	No of Usable Classrooms					TOTAL	Number Unusable *	Number Under Construction *
	Primary Public	Junior Public	Reart Public	Senior Public	Private All levels			
AJINGI	363	19	72	0	4	458	23	16
ALBASU	456	8	120	0	0	584	27	8
BAGWAI	454	45	84	0	0	583	9	17
BEBEJI	504	49	151	0	32	736	6	12
BICHI	929	81	135	0	39	1,184	17	16
BUNKURE	557	29	113	0	21	720	6	10
DALA	1,513	56	236	0	481	2,286	21	11
DAMBATTA	483	34	267	0	60	844	7	45
DAWAKIN KUDU	643	31	175	0	58	907	9	27
DAWAKIN TOFA	586	61	176	0	56	879	9	21
DOGUWA	373	29	93	0	75	570	11	11
FAGGE	1,062	87	332	0	1,193	2,674	60	23
GABASAWA	552	26	68	0	3	649	23	0
GARKO	419	35	90	0	5	549	15	20
GARUN MALAN	492	13	98	0	12	615	8	13
GAYA	563	13	147	0	0	723	21	1
GEZAWA	800	36	180	0	0	1016	7	25
GWALE	1,576	50	339	0	1,065	3,030	0	20
GWARZO	878	58	185	0	61	1,182	19	29
KABO	609	25	73	0	8	715	31	10
KANO MUNICIPAL	1,261	142	380	12	797	2,592	2	56
KARAYE	557	39	111	0	10	717	5	5
KIBIYA	392	16	53	0	34	495	7	0
KIRU	656	61	176	0	43	936	12	16
KUMBOTSO	1,208	74	302	0	1,316	2,900	14	45
KUNCHI	436	37	54	0	0	527	8	4
KURA	549	12	164	0	56	781	26	8
MADOBI	498	22	113	0	17	650	15	7
MAKODA	367	25	103	0	0	495	3	3
MINJIBIR	800	69	78	0	49	996	13	15
NASSARAWA	1,453	188	20	0	1,990	3,651	0	39
RANO	528	23	129	0	12	692	19	7
RIMIN GADO	460	35	55	0	8	558	2	40
ROGO	641	56	124	8	26	855	7	14
SHANONO	523	26	75	0	6	630	21	15
SUMAILA	455	29	132	0	27	643	34	5
TAKAI	576	29	144	0	21	770	13	26
TARAUNI	1,062	35	126	0	1,669	2,892	1	5
TOFA	461	25	84	0	20	590	2	1
TSANYAWA	496	32	75	0	0	603	10	7
TUDUN WADA	607	43	157	4	23	834	27	19
UNGOGO	1,191	61	182	0	218	1,652	14	45
WARAWA	424	22	38	0	0	484	9	17
WUDIL	713	15	129	10	47	914	2	21
TOTAL	30,126	1,901	6,138	34	9,562	47,761	595	755

*Question of usability not asked in Private school census so assumed 100% Usable

Table 5.2: Pupil-classroom ratio by school type and LGA

LGA	Public				Private
	Pre-primary and Primary	Junior Secondary	Reart Secondary	Senior Secondary	All levels
AJINGI	99	31	43	0	52
ALBASU	83	24	49	0	0
BAGWAI	61	16	40	0	0
BEBEJI	90	36	50	0	35
BICHI	92	43	77	0	59
BUNKURE	100	23	46	0	24
DALA	84	73	100	0	31
DAMBATTA	96	22	44	0	27
DAWAKIN KUDU	134	50	72	0	36
DAWAKIN TOFA	79	27	55	0	76
DOGUWA	130	32	38	0	16
FAGGE	88	50	106	0	20
GABASAWA	79	41	69	0	21
GARKO	85	37	57	0	29
GARUN MALAN	80	44	41	0	28
GAYA	86	23	55	0	0
GEZAWA	112	67	72	0	0
GWALE	73	50	102	0	39
GWARZO	73	35	58	0	29
KABO	85	40	80	0	40
KANO MUNICIPAL	68	54	81	103	31
KARAYE	105	41	49	0	41
KIBIYA	60	25	41	0	42
KIRU	106	30	51	0	23
KUMBOTSO	107	29	94	0	23
KUNCHI	72	18	29	0	0
KURA	81	42	58	0	35
MADObI	93	41	76	0	24
MAKODA	81	13	26	0	0
MINJIBIR	96	43	54	0	29
NASSARAWA	99	43	109	0	21
RANO	72	24	59	0	29
RIMIN GADO	88	28	47	0	16
ROGO	123	46	54	38	37
SHANONO	84	23	42	0	14
SUMAILA	81	25	56	0	30
TAKAI	83	34	47	0	26
TARAUNI	85	55	119	0	31
TOFA	80	34	51	0	38
TSANYAWA	97	45	45	0	0
TUDUN WADA	127	33	55	29	29
UNGOGO	117	67	87	0	27
WARAWA	93	38	39	0	0
WUDIL	88	48	67	117	25
TOTAL	91	40	67	94	27



Graph 6 Kano State: Pupil/Classroom ratio by Level and by LGA (Primary)

Graph 7 Kano State: Percentage Classroom functions by Level and use by LGA (Primary)

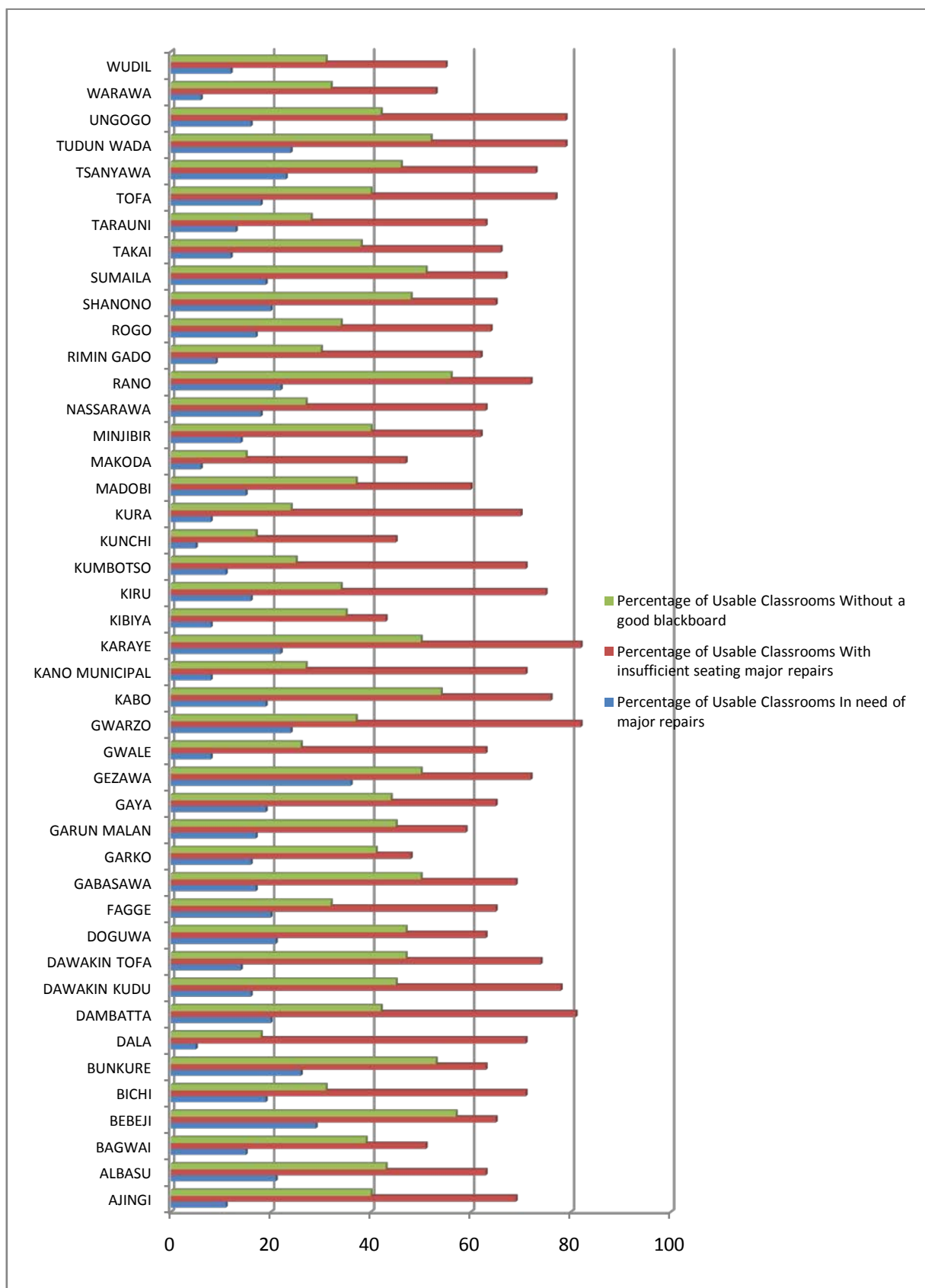


Table 5.3: Selective characteristics of public Primary school facilities

LGA	Percentage of Usable Classrooms			Percentage of Schools	
	In need of major repairs	With insufficient seating	Without a good blackboard	Where some classes are held outside	Without a health facility
AJINGI	11	69	40	67	56
ALBASU	21	63	43	72	45
BAGWAI	15	51	39	47	38
BEBEJI	29	65	57	61	53
BICHI	19	71	31	50	66
BUNKURE	26	63	53	46	57
DALA	5	71	18	22	19
DAMBATTA	20	81	42	82	81
DAWAKIN KUDU	16	78	45	74	69
DAWAKIN TOFA	14	74	47	47	28
DOGUWA	21	63	47	66	70
FAGGE	20	65	32	38	20
GABASAWA	17	69	50	66	45
GARKO	16	48	41	74	58
GARUN MALAN	17	59	45	28	60
GAYA	19	65	44	57	70
GEZAWA	36	72	50	44	43
GWALE	8	63	26	39	19
GWARZO	24	82	37	71	70
KABO	19	76	54	65	82
KANO MUNICIPAL	8	71	27	24	24
KARAYE	22	82	50	67	77
KIBIYA	8	43	35	57	74
KIRU	16	75	34	61	54
KUMBOTSO	11	71	25	36	29
KUNCHI	5	45	17	56	75
KURA	8	70	24	38	54
MADObI	15	60	37	39	76
MAKODA	6	47	15	58	35
MINJIBIR	14	62	40	55	62
NASSARAWA	18	63	27	28	14
RANO	22	72	56	53	51
RIMIN GADO	9	62	30	74	28
ROGO	17	64	34	48	45
SHANONO	20	65	48	52	78
SUMAILA	19	67	51	40	62
TAKAI	12	66	38	65	73
TARAUNI	13	63	28	43	44
TOFA	18	77	40	45	45
TSANYAWA	23	73	46	40	76
TUDUN WADA	24	79	52	69	48
UNGOGO	16	79	42	49	42
WARAWA	6	53	32	63	78
WUDIL	12	55	31	45	42
TOTAL	16	67	37	52	52

Table 5.4: Selective characteristics of public Junior Secondary school facilities

LGA	Percentage of Usable Classrooms			Percentage of Schools	
	In need of major repairs	With insufficient seating	Without a good blackboard	Where some classes are held outside	Without a health facility
AJINGI	5	21	47	0	20
ALBASU	0	13	0	50	0
BAGWAI	11	24	7	50	13
BEBEJI	8	37	20	18	0
BICHI	15	63	36	6	25
BUNKURE	28	86	45	14	29
DALA	30	77	32	20	10
DAMBATTA	0	9	6	0	0
DAWAKIN KUDU	26	35	0	11	0
DAWAKIN TOFA	20	70	38	0	9
DOGUWA	24	21	14	0	0
FAGGE	5	36	36	0	0
GABASAWA	0	69	19	0	0
GARKO	11	11	31	0	38
GARUN MALAN	0	77	0	50	0
GAYA	23	0	23	0	0
GEZAWA	28	61	31	0	11
GWALE	20	74	22	0	0
GWARZO	9	67	10	0	11
KABO	8	52	20	0	0
KANO MUNICIPAL	17	61	39	5	5
KARAYE	15	41	28	20	0
KIBIYA	13	38	31	20	20
KIRU	3	18	13	0	0
KUMBOTSO	12	47	7	9	9
KUNCHI	0	19	11	0	43
KURA	0	0	0	50	0
MADOBI	18	32	0	0	40
MAKODA	20	0	8	0	0
MINJIBIR	9	28	23	14	7
NASSARAWA	22	76	21	5	5
RANO	35	48	43	0	17
RIMIN GADO	11	71	60	0	29
ROGO	25	43	27	7	21
SHANONO	0	8	12	0	0
SUMAILA	14	24	34	0	0
TAKAI	3	21	28	0	50
TARAUNI	6	26	34	17	17
TOFA	0	40	20	0	50
TSANYAWA	19	41	28	10	30
TUDUN WADA	16	33	12	0	11
UNGOGO	26	54	23	8	8
WARAWA	0	50	23	14	43
WUDIL	0	67	0	0	0
TOTAL	14	47	24	7	13

Table 5.5: Selective characteristics of Rearticulated Secondary school facilities

LGA	Percentage of Usable Classrooms			Percentage of Schools	
	In need of major repairs	With insufficient seating	Without a good blackboard	Where some classes are held outside	Without a health facility
AJINGI	33	51	25	0	0
ALBASU	8	43	16	17	8
BAGWAI	4	44	18	0	0
BEBEJI	13	32	9	0	0
BICHI	21	31	4	9	0
BUNKURE	7	32	6	0	8
DALA	7	29	36	25	6
DAMBATTA	1	57	28	0	6
DAWAKIN KUDU	23	26	21	18	0
DAWAKIN TOFA	1	23	27	0	0
DOGUWA	3	22	12	8	0
FAGGE	12	15	11	6	11
GABASAWA	0	15	12	14	0
GARKO	3	13	9	0	0
GARUN MALAN	6	48	14	0	0
GAYA	12	25	17	0	0
GEZAWA	4	36	21	7	0
GWALE	14	35	29	0	0
GWARZO	6	44	21	24	0
KABO	7	19	11	25	0
KANO MUNICIPAL	5	12	16	11	0
KARAYE	4	31	13	11	11
KIBIYA	0	17	13	0	0
KIRU	27	57	29	7	7
KUMBOTSO	2	33	25	19	4
KUNCHI	7	15	24	0	0
KURA	7	46	32	0	0
MADOBI	9	38	19	0	36
MAKODA	4	49	34	0	0
MINJIBIR	5	26	31	14	0
NASSARAWA	0	85	0	0	0
RANO	14	33	3	14	0
RIMIN GADO	0	67	29	0	0
ROGO	7	18	10	8	0
SHANONO	8	9	8	17	0
SUMAILA	0	61	9	0	0
TAKAI	28	25	42	14	7
TARAUNI	7	39	0	7	0
TOFA	4	67	23	0	0
TSANYAWA	11	39	37	0	0
TUDUN WADA	10	50	15	7	7
UNGOGO	0	43	15	12	0
WARAWA	0	68	21	40	20
WUDIL	13	25	26	8	8
TOTAL	9	34	20	8	3

Table 5.6: Selective characteristics of Public Senior Secondary school facilities

LGA	Percentage of Usable Classrooms			Percentage of Schools	
	In need of major repairs	With insufficient seating	Without a good blackboard	Where some classes are held outside	Without a health facility
AJINGI	0	0	0	0	0
ALBASU	0	0	0	0	0
BAGWAI	0	0	0	0	0
BEBEJI	0	0	0	0	0
BICHI	0	0	0	0	0
BUNKURE	0	0	0	0	0
DALA	0	0	0	0	0
DAMBATTA	0	0	0	0	0
DAWAKIN KUDU	0	0	0	0	0
DAWAKIN TOFA	0	0	0	0	0
DOGUWA	0	0	0	0	0
FAGGE	0	0	0	0	0
GABASAWA	0	0	0	0	0
GARKO	0	0	0	0	0
GARUN MALAN	0	0	0	0	0
GAYA	0	0	0	0	0
GEZAWA	0	0	0	0	0
GWALE	0	0	0	0	0
GWARZO	0	0	0	0	0
KABO	0	0	0	0	0
KANO MUNICIPAL	0	0	100	0	0
KARAYE	0	0	0	0	0
KIBIYA	0	0	0	0	0
KIRU	0	0	0	0	0
KUMBOTSO	0	0	0	0	0
KUNCHI	0	0	0	0	0
KURA	0	0	0	0	0
MADOBI	0	0	0	0	0
MAKODA	0	0	0	0	0
MINJIBIR	0	0	0	0	0
NASSARAWA	0	0	0	0	0
RANO	0	0	0	0	0
RIMIN GADO	0	0	0	0	0
ROGO	0	25	0	0	0
SHANONO	0	0	0	0	0
SUMAILA	0	0	0	0	0
TAKAI	0	0	0	0	0
TARAUNI	0	0	0	0	0
TOFA	0	0	0	0	0
TSANYAWA	0	0	0	0	0
TUDUN WADA	0	0	0	0	0
UNGOGO	0	0	0	0	0
WARAWA	0	0	0	0	0
WUDIL	100	0	100	0	0
TOTAL	29	6	65	0	0

Table 5.7: Main source of safe water in public primary schools, percentage of schools

LGA	Percentage of schools with:					Total
	Piped water	Borehole	Well	Other	No Source	
AJINGI	3	17	12	4	63	100
ALBASU	0	34	10	6	50	100
BAGWAI	15	40	17	4	25	100
BEBEJI	4	7	21	2	66	100
BICHI	13	8	17	1	60	100
BUNKURE	4	23	22	10	42	100
DALA	11	34	6	36	13	100
DAMBATTA	3	9	21	0	67	100
DAWAKIN KUDU	11	17	10	1	61	100
DAWAKIN TOFA	4	19	19	0	59	100
DOGUWA	3	9	18	1	69	100
FAGGE	9	46	8	15	23	100
GABASAWA	3	17	30	3	47	100
GARKO	5	10	13	0	72	100
GARUN MALAN	1	30	12	2	54	100
GAYA	10	24	11	4	51	100
GEZAWA	2	18	26	2	52	100
GWALE	26	31	23	8	13	100
GWARZO	8	14	16	2	60	100
KABO	7	15	4	2	71	100
KANO MUNICIPAL	45	26	10	4	14	100
KARAYE	8	8	9	1	75	100
KIBIYA	2	23	12	0	62	100
KIRU	6	5	24	1	63	100
KUMBOTSO	27	21	26	2	25	100
KUNCHI	2	13	6	2	78	100
KURA	5	16	30	1	48	100
MADOBI	10	20	5	8	57	100
MAKODA	1	15	27	3	54	100
MINJIBIR	1	21	12	4	62	100
NASSARAWA	12	22	9	45	12	100
RANO	9	8	23	9	52	100
RIMIN GADO	11	23	2	1	63	100
ROGO	1	16	44	3	37	100
SHANONO	0	6	12	1	81	100
SUMAILA	4	42	16	7	30	100
TAKAI	0	22	13	4	62	100
TARAUNI	32	14	15	20	20	100
TOFA	3	30	19	1	46	100
TSANYAWA	0	29	9	2	59	100
TUDUN WADA	5	11	40	2	42	100
UNGOGO	2	13	13	22	50	100
WARAWA	7	27	5	6	56	100
WUDIL	23	10	6	10	52	100
TOTAL	9	19	16	7	49	100

Table 5.8: Main source of safe water in public Junior Secondary schools, percentage of schools

LGA	Percentage of schools with:					Total
	Piped water	Borehole	Well	Other	No Source	
AJINGI	0	80	0	0	20	100
ALBASU	0	50	0	0	50	100
BAGWAI	0	50	13	0	38	100
BEBEJI	9	18	36	9	27	100
BICHI	25	19	13	6	38	100
BUNKURE	0	29	29	0	43	100
DALA	0	60	0	20	20	100
DAMBATTA	0	80	20	0	0	100
DAWAKIN KUDU	22	56	0	0	22	100
DAWAKIN TOFA	9	27	18	9	36	100
DOGUWA	0	50	25	13	13	100
FAGGE	0	50	0	25	25	100
GABASAWA	0	50	50	0	0	100
GARKO	13	38	13	0	38	100
GARUN MALAN	0	0	100	0	0	100
GAYA	0	50	25	0	25	100
GEZAWA	0	11	44	0	44	100
GWALE	14	43	14	29	0	100
GWARZO	11	44	33	0	11	100
KABO	20	60	0	0	20	100
KANO MUNICIPAL	41	41	5	5	9	100
KARAYE	10	10	30	0	50	100
KIBIYA	0	40	0	0	60	100
KIRU	0	33	25	0	42	100
KUMBOTSO	27	45	18	0	9	100
KUNCHI	0	71	0	0	29	100
KURA	50	0	0	0	50	100
MADOBI	20	40	0	0	40	100
MAKODA	0	75	25	0	0	100
MINJIBIR	0	43	29	0	29	100
NASSARAWA	5	20	20	30	25	100
RANO	0	33	33	0	33	100
RIMIN GADO	14	29	0	29	29	100
ROGO	0	36	29	21	14	100
SHANONO	0	67	0	0	33	100
SUMAILA	0	71	14	0	14	100
TAKAI	0	50	33	0	17	100
TARAUNI	50	0	0	0	50	100
TOFA	0	67	0	17	17	100
TSANYAWA	0	80	0	10	10	100
TUDUN WADA	0	44	0	0	56	100
UNGOGO	0	31	8	8	54	100
WARAWA	14	29	0	0	57	100
WUDIL	25	25	0	0	50	100
TOTAL	9	40	16	7	28	100

Table 5.9: Main source of safe water in public Rearticulated Secondary schools, percentage of schools

LGA	Percentage of schools with:					Total
	Piped water	Borehole	Well	Other	No Source	
AJINGI	0	43	29	14	14	100
ALBASU	0	92	0	8	0	100
BAGWAI	29	71	0	0	0	100
BEBEJI	13	31	31	13	13	100
BICHI	36	36	9	9	9	100
BUNKURE	0	67	17	0	17	100
DALA	13	63	13	0	13	100
DAMBATTA	0	71	24	6	0	100
DAWAKIN KUDU	29	53	6	0	12	100
DAWAKIN TOFA	17	50	8	8	17	100
DOGUWA	17	33	17	33	0	100
FAGGE	0	72	6	11	11	100
GABASAWA	29	43	29	0	0	100
GARKO	25	13	13	0	50	100
GARUN MALAN	10	60	20	0	10	100
GAYA	45	55	0	0	0	100
GEZAWA	7	64	21	0	7	100
GWALE	5	67	10	10	10	100
GWARZO	0	47	12	0	41	100
KABO	13	25	38	0	25	100
KANO MUNICIPAL	32	53	5	0	11	100
KARAYE	44	22	11	0	22	100
KIBIYA	0	60	20	0	20	100
KIRU	7	29	50	7	7	100
KUMBOTSO	23	54	19	0	4	100
KUNCHI	0	60	0	40	0	100
KURA	0	58	25	8	8	100
MADObI	0	64	9	18	9	100
MAKODA	0	63	25	0	13	100
MINJIBIR	0	14	43	0	43	100
NASSARAWA	0	0	0	67	33	100
RANO	29	43	14	0	14	100
RIMIN GADO	40	40	0	0	20	100
ROGO	0	69	31	0	0	100
SHANONO	0	50	0	17	33	100
SUMAILA	10	50	20	0	20	100
TAKAI	0	79	7	0	14	100
TARAUNI	50	36	14	0	0	100
TOFA	0	57	14	14	14	100
TSANYAWA	0	57	0	0	43	100
TUDUN WADA	14	21	29	0	36	100
UNGOGO	0	53	6	12	29	100
WARAWA	0	60	0	0	40	100
WUDIL	46	38	8	0	8	100
TOTAL	14	52	15	5	14	100

Table 5.10: Main source of safe water in public senior secondary schools, percentage of schools

LGA	Percentage of schools with:					Total
	Piped water	Borehole	Well	Other	No Source	
AJINGI	0	0	0	0	0	0
ALBASU	0	0	0	0	0	0
BAGWAI	0	0	0	0	0	0
BEBEJI	0	0	0	0	0	0
BICHI	0	0	0	100	0	100
BUNKURE	0	0	0	0	0	0
DALA	0	0	0	0	0	0
DAMBATTA	0	0	0	0	0	0
DAWAKIN KUDU	0	0	0	0	0	0
DAWAKIN TOFA	0	0	0	0	0	0
DOGUWA	0	0	0	0	0	0
FAGGE	0	0	0	0	0	0
GABASAWA	0	0	0	0	0	0
GARKO	0	0	0	0	0	0
GARUN MALAN	0	0	0	0	0	0
GAYA	0	0	0	0	0	0
GEZAWA	0	0	0	0	0	0
GWALE	0	0	0	0	0	0
GWARZO	0	0	0	0	0	0
KABO	0	0	0	0	0	0
KANO MUNICIPAL	0	100	0	0	0	100
KARAYE	0	0	0	0	0	0
KIBIYA	0	0	0	0	0	0
KIRU	0	0	0	0	0	0
KUMBOTSO	0	0	0	0	0	0
KUNCHI	0	0	0	0	0	0
KURA	0	0	0	0	0	0
MADOBI	0	0	0	0	0	0
MAKODA	0	0	0	0	0	0
MINJIBIR	0	0	0	0	0	0
NASSARAWA	0	0	0	0	0	0
RANO	0	0	0	0	0	0
RIMIN GADO	0	0	0	0	0	0
ROGO	0	50	50	0	0	100
SHANONO	0	0	0	0	0	0
SUMAILA	0	0	0	0	0	0
TAKAI	0	0	0	0	0	0
TARAUNI	0	0	0	0	0	0
TOFA	0	0	0	0	0	0
TSANYAWA	0	0	0	0	0	0
TUDUN WADA	0	0	100	0	0	100
UNGOGO	0	0	0	0	0	0
WARAWA	0	0	0	0	0	0
WUDIL	100	0	0	0	0	100
TOTAL	17	33	33	17	0	100

Table 5.11: Toilets in public primary schools

LGA	No of Public Primary and Pre Primary Schools with						Pupil Toilet Ratio
	No toilet	One toilet	Two toilets	Three toilets	Four toilets	Five or more toilets	
AJINGI	63	17	8	3	8	9	249
ALBASU	70	3	9	3	5	22	100
BAGWAI	7	2	6	6	6	19	126
BEBEJI	0	1	8	3	13	14	241
BICHI	93	12	15	6	15	31	177
BUNKURE	53	12	11	21	14	55	86
DALA	5	13	16	13	15	35	295
DAMBATTA	6	4	8	9	8	18	224
DAWAKIN KUDU	0	10	13	15	9	26	261
DAWAKIN TOFA	9	0	2	6	21	29	139
DOGUWA	51	6	5	3	1	17	318
FAGGE	14	9	17	11	10	42	148
GABASAWA	35	1	4	3	4	30	121
GARKO	1	4	4	2	1	19	223
GARUN MALAN	47	3	6	4	8	21	143
GAYA	84	11	13	5	6	24	174
GEZAWA	15	8	9	4	11	20	402
GWALE	43	13	42	26	21	60	122
GWARZO	87	12	6	5	5	13	357
KABO	58	0	7	2	10	22	214
KANO MUNICIPAL	2	15	33	14	22	43	129
KARAYE	92	3	6	3	8	24	268
KIBIYA	0	4	6	1	12	19	118
KIRU	70	6	23	20	11	18	253
KUMBOTSO	28	24	39	27	11	46	182
KUNCHI	11	25	6	1	6	13	207
KURA	29	8	13	14	16	14	180
MADOBI	79	5	8	10	11	18	185
MAKODA	25	0	11	4	5	19	160
MINJIBIR	12	8	20	37	25	32	152
NASSARAWA	0	26	49	27	25	40	208
RANO	70	6	11	4	5	19	182
RIMIN GADO	60	3	6	4	12	8	320
ROGO	64	6	22	31	12	16	235
SHANONO	1	4	7	2	6	15	308
SUMAILA	2	3	6	5	8	25	147
TAKAI	61	4	11	5	2	27	141
TARAUNI	62	52	49	14	9	22	212
TOFA	0	7	5	10	8	18	172
TSANYAWA	76	5	9	9	2	14	262
TUDUN WADA	0	7	15	4	5	18	427
UNGOGO	58	23	35	30	13	42	257
WARAWA	30	1	4	46	4	32	94
WUDIL	44	5	13	25	9	26	157
TOTAL	1,617	391	618	497	439	1,094	187

Excludes Staff Only Toilets

Table 5.12: Toilets in public Junior Secondary schools

LGA	No of Public Junior Schools with						Pupil Toilet Ratio
	No toilet	One toilet	Two toilets	Three toilets	Four toilets	Five or more toilets	
AJINGI	1	3	0	0	0	1	37
ALBASU	0	0	0	0	0	2	24
BAGWAI	2	0	0	1	2	3	17
BEBEJI	1	0	2	3	3	2	43
BICHI	2	0	2	2	3	7	48
BUNKURE	0	0	1	3	0	3	23
DALA	1	0	0	0	2	7	69
DAMBATTA	1	0	0	1	0	3	41
DAWAKIN KUDU	1	2	1	1	3	1	54
DAWAKIN TOFA	2	1	1	2	2	3	30
DOGUWA	1	0	0	1	1	5	33
FAGGE	0	0	0	1	1	6	52
GABASAWA	0	0	1	1	1	3	35
GARKO	2	0	0	0	2	4	37
GARUN MALAN	0	0	0	0	1	1	38
GAYA	0	0	0	1	1	2	25
GEZAWA	0	3	1	0	1	4	62
GWALE	1	0	0	1	0	5	50
GWARZO	4	2	2	0	0	1	45
KABO	0	0	0	2	0	3	40
KANO MUNICIPAL	1	0	5	4	3	9	56
KARAYE	1	2	2	3	0	2	41
KIBIYA	3	0	0	1	0	1	28
KIRU	4	0	2	1	4	1	31
KUMBOTSO	1	0	2	1	0	7	29
KUNCHI	2	1	0	1	0	3	24
KURA	0	0	0	0	1	1	42
MADObI	0	0	1	2	0	2	40
MAKODA	0	1	0	0	1	2	14
MINJIBIR	3	0	3	0	2	6	47
NASSARAWA	1	0	7	3	0	9	44
RANO	2	0	0	1	0	3	24
RIMIN GADO	2	0	1	2	0	2	31
ROGO	1	2	3	4	2	2	46
SHANONO	2	0	1	1	0	2	23
SUMAILA	2	0	0	2	1	2	38
TAKAI	0	0	2	1	2	1	35
TARAUNI	2	0	1	0	2	1	64
TOFA	4	0	1	0	1	0	50
TSANYAWA	3	1	1	3	0	2	44
TUDUN WADA	2	2	1	1	1	2	33
UNGOGO	3	0	3	0	1	6	65
WARAWA	2	1	0	0	2	2	38
WUDIL	1	0	1	0	0	2	48
TOTAL	61	21	48	51	46	136	43

Excludes Staff Only Toilets

5.13: Toilets in public Rearticulated Secondary schools

LGA	No of Public Rearticulated Secondary Schools with						Pupil Toilet Ratio
	No toilet	One toilet	Two toilets	Three toilets	Four toilets	Five or more toilets	
AJINGI	1	2	1	0	0	3	36
ALBASU	0	0	0	1	0	11	31
BAGWAI	0	0	1	0	0	6	60
BEBEJI	2	0	1	2	1	10	65
BICHI	1	1	1	0	2	6	112
BUNKURE	0	0	2	1	0	9	54
DALA	1	0	0	0	0	15	78
DAMBATTA	0	2	2	2	2	9	60
DAWAKIN KUDU	1	0	0	1	1	14	73
DAWAKIN TOFA	1	0	0	1	1	9	58
DOGUWA	0	0	0	1	3	8	43
FAGGE	0	0	1	0	0	17	119
GABASAWA	0	1	0	1	1	4	59
GARKO	1	0	0	1	0	6	41
GARUN MALAN	1	0	1	1	0	7	42
GAYA	0	0	0	0	0	11	57
GEZAWA	2	0	1	0	2	9	38
GWALE	1	0	1	0	1	18	123
GWARZO	2	2	1	0	2	10	59
KABO	0	0	0	2	0	6	26
KANO MUNICIPAL	0	0	1	1	2	15	135
KARAYE	1	0	2	0	0	6	25
KIBIYA	0	1	0	0	1	3	63
KIRU	0	1	0	0	2	11	57
KUMBOTSO	1	0	2	1	4	18	124
KUNCHI	0	0	0	0	0	5	20
KURA	0	0	0	4	2	6	78
MADObI	0	0	0	2	1	8	43
MAKODA	0	0	0	1	0	7	32
MINJIBIR	0	0	0	1	0	6	59
NASSARAWA	0	0	0	0	1	2	91
RANO	1	0	2	1	1	9	53
RIMIN GADO	0	0	1	0	0	4	59
ROGO	0	1	0	1	0	11	69
SHANONO	0	0	0	0	1	5	46
SUMAILA	0	1	2	0	1	6	36
TAKAI	1	0	1	1	1	10	58
TARAUNI	0	0	0	0	2	12	129
TOFA	0	0	0	0	2	5	96
TSANYAWA	0	0	0	0	1	6	42
TUDUN WADA	3	1	1	2	1	6	71
UNGOGO	0	0	2	0	2	13	73
WARAWA	0	0	1	0	1	3	35
WUDIL	0	0	0	2	0	11	46
TOTAL	21	13	28	31	42	377	66

Table 5.14: Toilets in public Senior Secondary schools

LGA	No of Public Senior Secondary Schools with						Pupil Toilet Ratio
	No toilet	One toilet	Two toilets	Three toilets	Four toilets	Five or more toilets	
AJINGI	0	0	0	0	0	0	0
ALBASU	0	0	0	0	0	0	0
BAGWAI	0	0	0	0	0	0	0
BEBEJI	0	0	0	0	0	0	0
BICHI	1	0	0	0	0	0	0
BUNKURE	0	0	0	0	0	0	0
DALA	0	0	0	0	0	0	0
DAMBATTA	0	0	0	0	0	0	0
DAWAKIN KUDU	0	0	0	0	0	0	0
DAWAKIN TOFA	0	0	0	0	0	0	0
DOGUWA	0	0	0	0	0	0	0
FAGGE	0	0	0	0	0	0	0
GABASAWA	0	0	0	0	0	0	0
GARKO	0	0	0	0	0	0	0
GARUN MALAN	0	0	0	0	0	0	0
GAYA	0	0	0	0	0	0	0
GEZAWA	0	0	0	0	0	0	0
GWALE	0	0	0	0	0	0	0
GWARZO	0	0	0	0	0	0	0
KABO	0	0	0	0	0	0	0
KANO MUNICIPAL	0	0	0	0	0	1	89
KARAYE	0	0	0	0	0	0	0
KIBIYA	0	0	0	0	0	0	0
KIRU	0	0	0	0	0	0	0
KUMBOTSO	0	0	0	0	0	0	0
KUNCHI	0	0	0	0	0	0	0
KURA	0	0	0	0	0	0	0
MADObI	0	0	0	0	0	0	0
MAKODA	0	0	0	0	0	0	0
MINJIBIR	0	0	0	0	0	0	0
NASSARAWA	0	0	0	0	0	0	0
RANO	0	0	0	0	0	0	0
RIMIN GADO	0	0	0	0	0	0	0
ROGO	0	0	1	0	0	1	34
SHANONO	0	0	0	0	0	0	0
SUMAILA	0	0	0	0	0	0	0
TAKAI	0	0	0	0	0	0	0
TARAUNI	0	0	0	0	0	0	0
TOFA	0	0	0	0	0	0	0
TSANYAWA	0	0	0	0	0	0	0
TUDUN WADA	0	0	0	0	0	1	15
UNGOGO	0	0	0	0	0	0	0
WARAWA	0	0	0	0	0	0	0
WUDIL	0	0	0	0	0	1	146
TOTAL	1	0	1	0	0	4	82

Excludes Staff Only Toilets

Annex A Key Indicators (Efficiency Indicators)

A1. Transition Rate from Primary 6 to JSS 1

LGA	Transition Rate		
	Male	Female	Total
AJINGI	50.6	17.7	36.6
ALBASU	31.6	33.3	32.4
BAGWAI	52.0	30.9	43.9
BEBEJI	70.2	42.1	57.1
BICHI	46.3	39.0	42.9
BUNKURE	37.1	28.0	33.2
DALA	35.3	40.9	38.2
DAMBATTA	56.2	64.6	60.0
DAWAKIN KUDU	58.0	50.8	54.4
DAWAKIN TOFA	61.9	38.8	52.1
DOGUWA	40.6	31.8	36.9
FAGGE	96.9	71.4	84.8
GABASAWA	33.2	27.7	30.7
GARKO	39.8	22.9	31.8
GARUN MALAN	53.7	33.9	44.1
GAYA	59.4	37.0	50.0
GEZAWA	55.2	56.5	55.8
GWALE	52.1	62.8	57.6
GWARZO	55.1	46.9	51.4
KABO	41.7	37.8	39.9
KANO MUNICIPAL	77.4	53.0	65.0
KARAYE	48.8	23.6	37.1
KIBIYA	37.9	26.0	33.0
KIRU	48.0	34.5	41.9
KUMBOTSO	86.6	48.1	67.7
KUNCHI	29.1	21.1	25.5
KURA	51.9	48.9	50.3
MADOBİ	56.6	71.7	63.7
MAKODA	39.5	19.6	30.6
MINJIBIR	56.9	36.5	47.7
NASSARAWA	27.3	18.9	22.9
RANO	54.5	48.6	51.8
RIMIN GADO	33.7	20.8	27.2
ROGO	41.0	31.3	36.3
SHANONO	42.8	23.6	35.0
SUMAILA	47.2	48.4	47.7
TAKAI	34.8	35.0	34.9
TARAUNI	36.2	32.9	34.5
TOFA	61.0	18.7	39.1
TSANYAWA	44.9	18.3	32.0
TUDUN WADA	34.9	53.9	42.1
UNGOGO	53.6	37.1	45.3
WARAWA	32.3	13.3	22.6
WUDIL	49.9	37.4	43.7
TOTAL	50.4	39.5	45.2

A2. Promotion rate by class and gender

Grade	Promotion		
	Male	Female	Total
PRY1	100.0	100.0	100.0
PRY 2	98.3	99.6	99.0
PRY 3	100.0	99.5	99.7
PRY 4	93.7	94.3	94.0
PRY 5	92.8	89.6	91.2
PRY 6	92.8	89.6	91.2
JSS 1	108	121	113
JSS 2	104	99	102
JSS 3	94	95	95
SSS 1	99	101	100

A3. Repetition rate by class and gender

Grade	Repetition		
	Male	Female	total
PRY1	0.78	0.76	0.77
PRY 2	0.73	0.67	0.70
PRY 3	0.63	0.59	0.69
PRY 4	0.72	0.68	0.70
PRY 5	0.70	0.75	0.72
PRY 6	0.77	0.96	0.86
JSS 1	0.38	0.17	0.30
JSS 2	0.66	0.54	0.61
JSS 3	0.71	0.45	0.61
SSS 1	0.76	0.63	0.71

A4. Dropout rate by class and gender

Grade	Drop Out		
	Male	Female	Total
PRY1	0.0	0.0	0.0
PRY 2	1.0	0.0	0.3
PRY 3	0.0	0.0	0.0
PRY 4	5.6	5.0	5.3
PRY 5	6.5	9.7	8.1
PRY 6	6.4	9.4	7.9
JSS 1	0.0	0.0	0.0
JSS 2	0.0	0.5	0.0
JSS 3	5.3	4.6	4.4
SSS 1	0.2	0.0	0.07

A5. Survival rate by class and gender

Grade	Survival rate		
	Male	Female	Total
PRY1	100.0	100.0	100.0
PRY 2	92.6	92.3	92.4
PRY 3	84.9	83.3	84.1
PRY 4	69.9	70.2	70.0
PRY 5	60.8	58.0	59.4
PRY 6	50.3	47.7	49.0
JSS 1	23.7	17.2	20.5
JSS 2	20.8	14.3	17.6
JSS 3	18.9	12.6	15.7
SSS 1	16.8	9.8	13.3

Annex B: Population projections
B1. Population projections by LGA, 2013

LGA	6-11 Years			6-Years		
	Boys	Girls	Total	Boys	Girls	Total
AJINGI	18,962	17,739	36,702	8,263	6,953	15,216
ALBASU	20,782	19,315	40,097	9,057	7,564	16,620
BAGWAI	18,001	16,338	34,339	7,844	6,401	14,245
BEBEJI	20,720	19,103	39,825	9,029	7,482	16,512
BICHI	30,148	28,282	58,432	13,137	11,074	24,210
BUNKURE	18,592	17,443	36,036	8,102	6,829	14,931
DALA	49,814	38,492	88,307	21,706	15,143	36,850
DAMBATTA	22,597	21,257	43,853	9,846	8,323	18,169
DAWAKIN KUDU	23,851	23,677	47,528	10,393	9,258	19,651
DAWAKIN TOFA	27,418	24,851	52,269	11,947	9,737	21,685
DOGUWA	16,816	15,063	31,879	7,328	5,904	13,231
FAGGE	23,247	18,680	41,927	10,130	7,341	17,470
GABASAWA	23,291	21,214	44,505	10,149	8,311	18,461
GARKO	17,798	16,469	34,266	7,755	6,451	14,206
GARUN MALAN	12,535	12,030	24,565	5,462	4,707	10,170
GAYA	22,083	20,305	42,388	9,622	7,954	17,576
GEZAWA	29,808	29,671	59,479	12,989	11,602	24,591
GWALE	44,089	32,258	76,346	19,212	12,709	31,921
GWARZO	20,323	18,474	38,797	8,856	7,238	16,094
KABO	16,075	16,363	32,438	7,005	6,395	13,399
KANO MUNICIPAL	42,834	34,244	77,077	18,664	13,460	32,123
KARAYE	15,417	14,401	29,818	6,718	5,640	12,358
KIBIYA	15,125	13,708	28,833	6,591	5,371	11,963
KIRU	29,858	25,976	55,834	13,010	10,189	23,199
KUMBOTSO	32,201	30,212	62,413	14,032	11,828	25,860
KUNCHI	12,066	11,344	23,411	5,257	4,441	9,698
KURA	16,459	14,032	30,492	7,172	5,507	12,678
MADObI	15,233	13,577	28,810	6,638	5,322	11,959
MAKODA	24,264	22,632	46,897	10,574	8,862	19,436
MINJIBIR	22,987	22,095	45,082	10,016	8,645	18,662
NASSARAWA	68,672	57,147	125,819	29,924	22,438	52,361
RANO	16,153	14,515	30,668	7,038	5,688	12,727
RIMIN GADO	11,745	10,352	22,097	5,118	4,059	9,177
ROGO	24,751	23,272	48,024	10,786	9,112	19,898
SHANONO	15,157	14,493	29,650	6,605	5,673	12,277
SUMAILA	27,648	25,841	53,489	12,047	10,119	22,166
TAKAI	21,975	20,778	42,752	9,576	8,135	17,709
TARAUNI	24,065	22,614	46,679	10,487	8,854	19,340
TOFA	10,738	9,871	20,609	4,679	3,866	8,546
TSANYAWA	17,401	15,849	33,250	7,583	6,209	13,792
TUDUN WADA	25,128	23,739	48,867	10,949	9,293	20,242
UNGOGO	41,679	36,270	77,949	18,162	14,225	32,387
WARAWA	14,268	12,890	27,157	6,217	5,051	11,268
WUDIL	20,978	18,072	39,051	9,141	7,090	16,231
TOTAL	1,043,758	934,943	1,978,702	454,816	366,450	821,266

Annex B: Population projections

B2. Population projections by LGA, 2013

LGA	6-11 years			11-14 years			15-17 years		
	Boys	Girls	Total	Boys	Girls	Total	Boys	Girls	Total
AJINGI	18,962	17,739	36,702	8,157	6,856	15,014	7,405	6,280	13,685
ALBASU	20,782	19,315	40,097	8,941	7,458	16,399	8,115	6,832	14,947
BAGWAI	18,001	16,338	34,339	7,744	6,312	14,057	7,029	5,781	12,811
BEBEJI	20,720	19,103	39,825	8,914	7,378	16,292	8,091	6,758	14,849
BICHI	30,148	28,282	58,432	12,969	10,919	23,889	11,773	10,001	21,774
BUNKURE	18,592	17,443	36,036	7,999	6,734	14,732	7,260	6,168	13,429
DALA	49,814	38,492	88,307	21,430	14,932	36,361	19,452	13,678	33,129
DAMBATTA	22,597	21,257	43,853	9,721	8,207	17,927	8,824	7,517	16,340
DAWAKIN KUDU	23,851	23,677	47,528	10,260	9,130	19,390	9,314	8,363	17,676
DAWAKIN TOFA	27,418	24,851	52,269	11,795	9,602	21,397	10,707	8,795	19,501
DOGUWA	16,816	15,063	31,879	7,234	5,822	13,056	6,567	5,332	11,899
FAGGE	23,247	18,680	41,927	10,000	7,238	17,240	9,077	6,631	15,708
GABASAWA	23,291	21,214	44,505	10,020	8,195	18,215	9,095	7,506	16,602
GARKO	17,798	16,469	34,266	7,657	6,360	14,017	6,949	5,826	12,775
GARUN MALAN	12,535	12,030	24,565	5,393	4,642	10,034	4,894	4,252	9,147
GAYA	22,083	20,305	42,388	9,500	7,843	17,342	8,623	7,184	15,807
GEZAWA	29,808	29,671	59,479	12,823	11,441	24,264	11,640	10,479	22,119
GWALE	44,089	32,258	76,346	18,967	12,532	31,499	17,216	11,479	28,696
GWARZO	20,323	18,474	38,797	8,743	7,137	15,881	7,936	6,538	14,473
KABO	16,075	16,363	32,438	6,915	6,306	13,221	6,277	5,776	12,053
KANO MUNICIPAL	42,834	34,244	77,077	18,427	13,271	31,698	16,727	12,156	28,883
KARAYE	15,417	14,401	29,818	6,632	5,560	12,193	6,020	5,094	11,114
KIBIYA	15,125	13,708	28,833	6,507	5,296	11,803	5,906	4,851	10,758
KIRU	29,858	25,976	55,834	12,845	10,046	22,890	11,660	9,202	20,861
KUMBOTSO	32,201	30,212	62,413	13,852	11,664	25,516	12,574	10,684	23,257
KUNCHI	12,066	11,344	23,411	5,190	4,379	9,570	4,711	4,011	8,724
KURA	16,459	14,032	30,492	7,081	5,430	12,511	6,427	4,973	11,401
MADObI	15,233	13,577	28,810	6,554	5,248	11,800	5,948	4,807	10,755
MAKODA	24,264	22,632	46,897	10,438	8,739	19,177	9,475	8,005	17,479
MIINJIBIR	22,987	22,095	45,082	9,889	8,526	18,415	8,976	7,810	16,785
NASSARAWA	68,672	57,147	125,819	29,543	22,125	51,667	26,815	20,266	47,081
RANO	16,153	14,515	30,668	6,949	5,610	12,558	6,308	5,138	11,446
RIMIN GADO	11,745	10,352	22,097	5,053	4,002	9,055	4,586	3,666	8,253
ROGO	24,751	23,272	48,024	10,648	8,985	19,632	9,665	8,229	17,894
SHANONO	15,157	14,493	29,650	6,521	5,593	12,113	5,918	5,123	11,042
SUMAILA	27,648	25,841	53,489	11,894	9,977	21,872	10,796	9,139	19,935
TAKAI	21,975	20,778	42,752	9,453	8,020	17,474	8,581	7,346	15,927
TARAUNI	24,065	22,614	46,679	10,353	8,731	19,083	9,397	7,997	17,394
TOFA	10,738	9,871	20,609	4,620	3,813	8,432	4,193	3,492	7,685
TSANYAWA	17,401	15,849	33,250	7,486	6,123	13,609	6,795	5,609	12,403
TUDUN WADA	25,128	23,739	48,867	10,810	9,164	19,973	9,812	8,394	18,206
UNGOGO	41,679	36,270	77,949	17,930	14,027	31,957	16,275	12,849	29,123
WARAWA	14,268	12,890	27,157	6,138	4,981	11,118	5,572	4,562	10,133
WUDIL	20,978	18,072	39,051	9,025	6,991	16,015	8,192	6,403	14,596
TOTAL	1,043,758	934,943	1,978,702	449,017	361,342	810,359	407,574	330,982	738,557

B1. Population projections by LGA, 2013